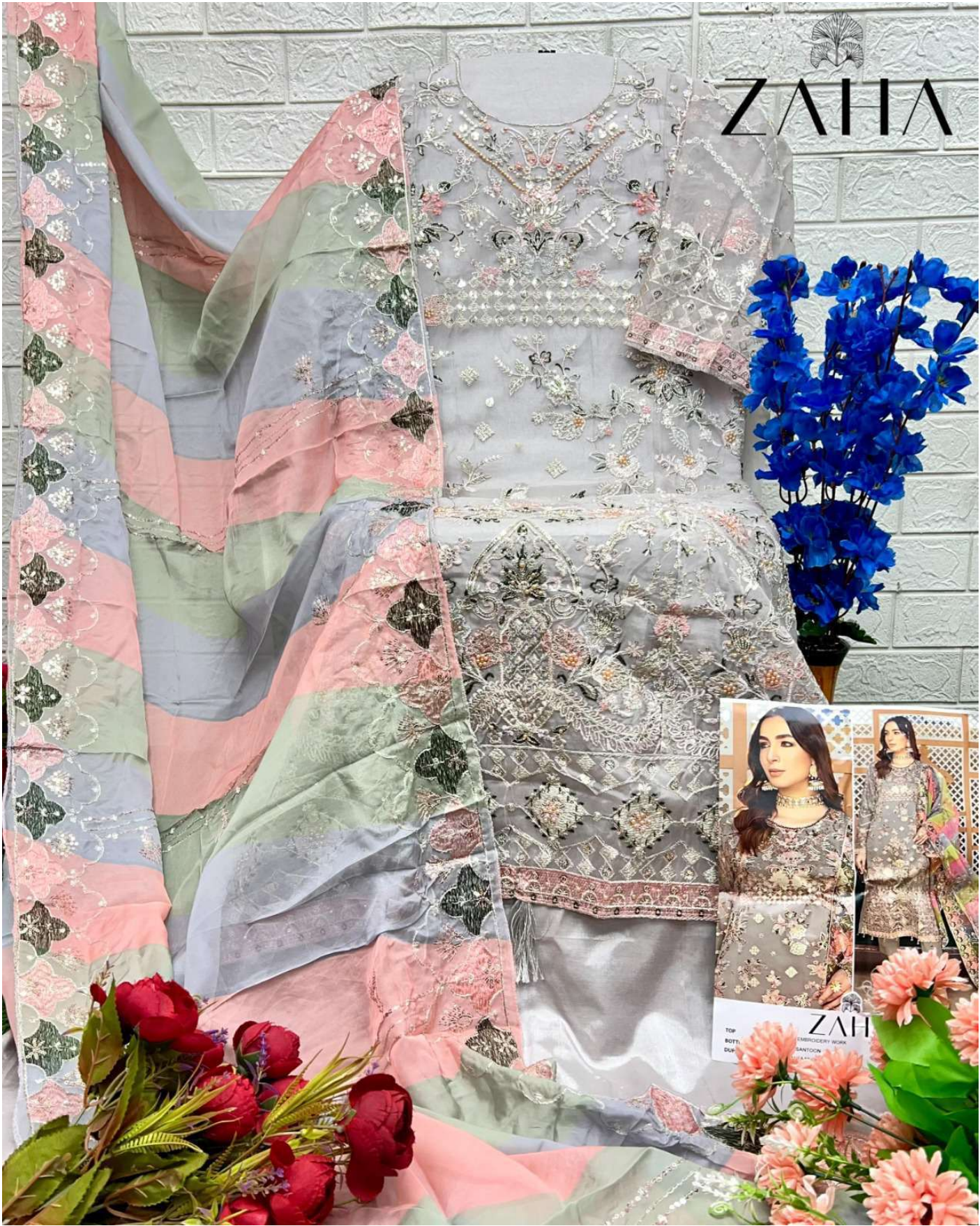


ZAHA
ABEELA



ZAHIA



TOP
BOTH
DUP
ZAHIA
EMBROIDERY WORK
SANTOON
KARACHI

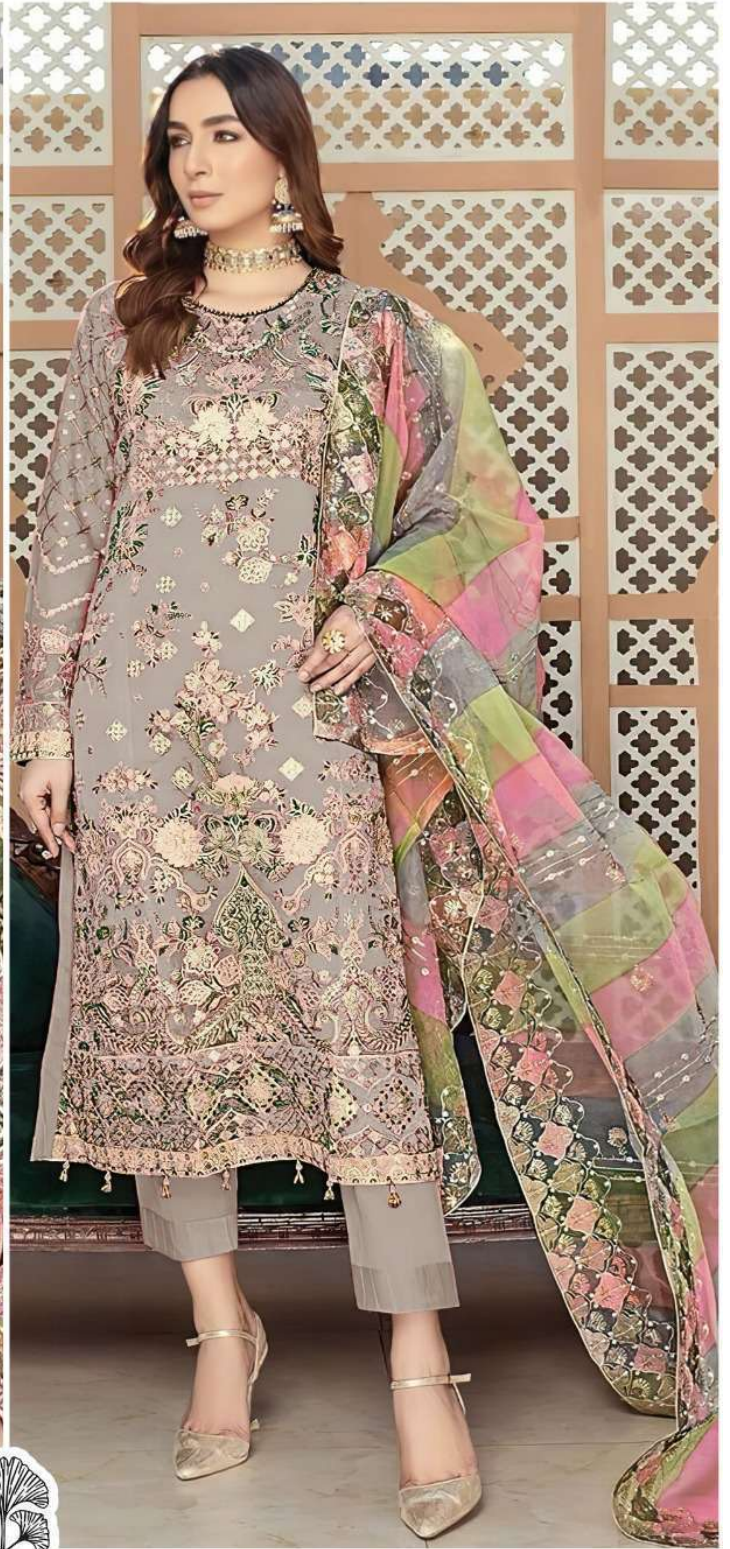


TOP
BOTTOM
DUF-

ORGA

ZAH





ABEELA

ZAHA

D.No.10362-A

TOP

ORGANZA EMBROIDERY WORK

BOTTOM

SANTOON

DUPATTA

ORGANZA EMBROIDERY

CARE INSTRUCTIONS

- Ⓟ Dry clean only
- ⚠ Do not use any bleach or stain removing chemical
- ☐ Iron the fabric at moderate temperature
- ⊗ Do not dry fabric in direct sunlight

ABEELA

ZAHA

TOP
ORGANZA EMBROIDERY WORK

BOTTOM
SANTOON

DUPATTA
ORGANZA EMBROIDERY



10362-A



10362-B



10362-C



10362-D



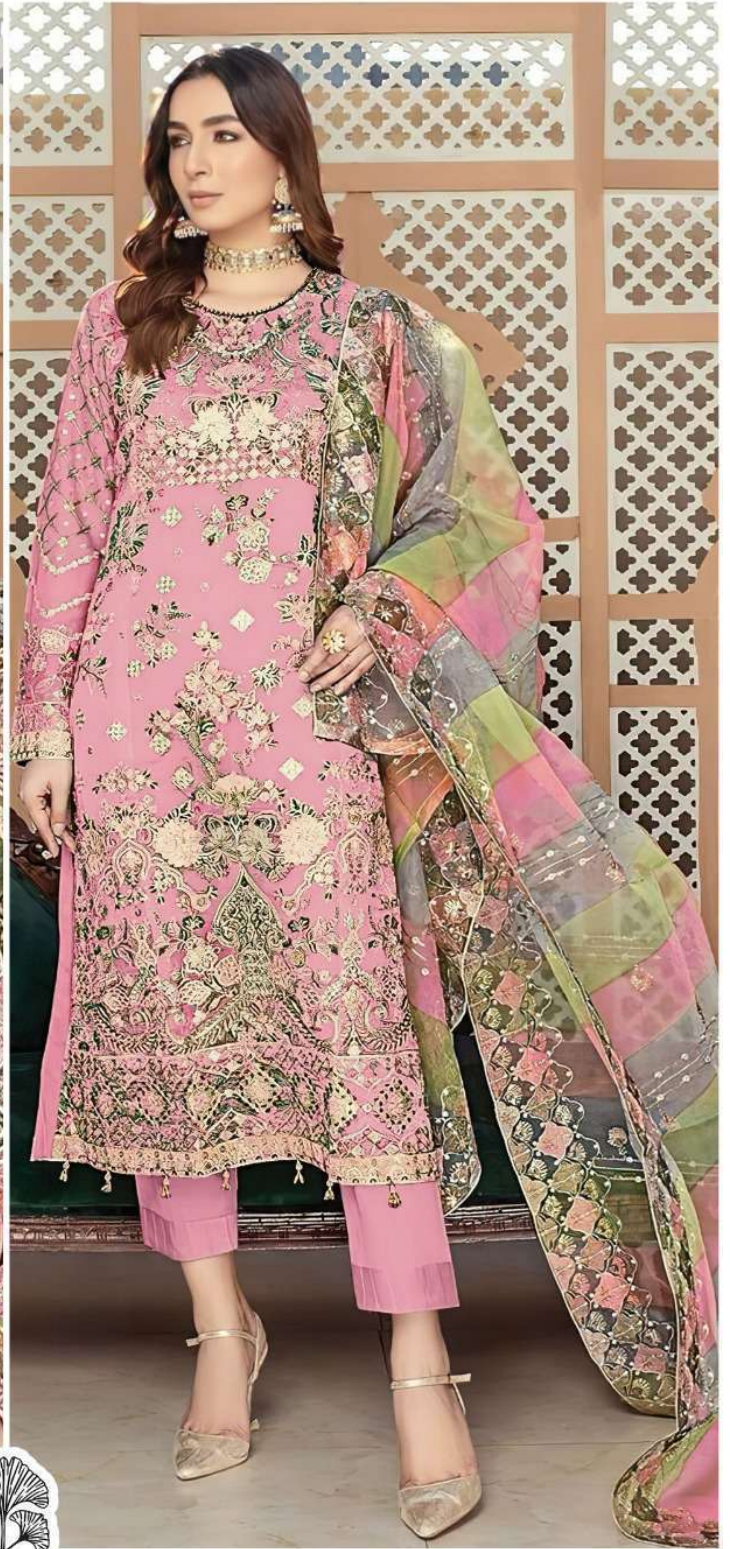
ZAHRA



TOP
BOTTOM
DUPATTA

ZAHRA

ORGANZA EMBROIDERED
SANTOCOTTON
ORGANZA EMBROIDERED



ABEELA

ZAHA

D.No.10362-B

TOP

ORGANZA EMBROIDERY WORK

BOTTOM

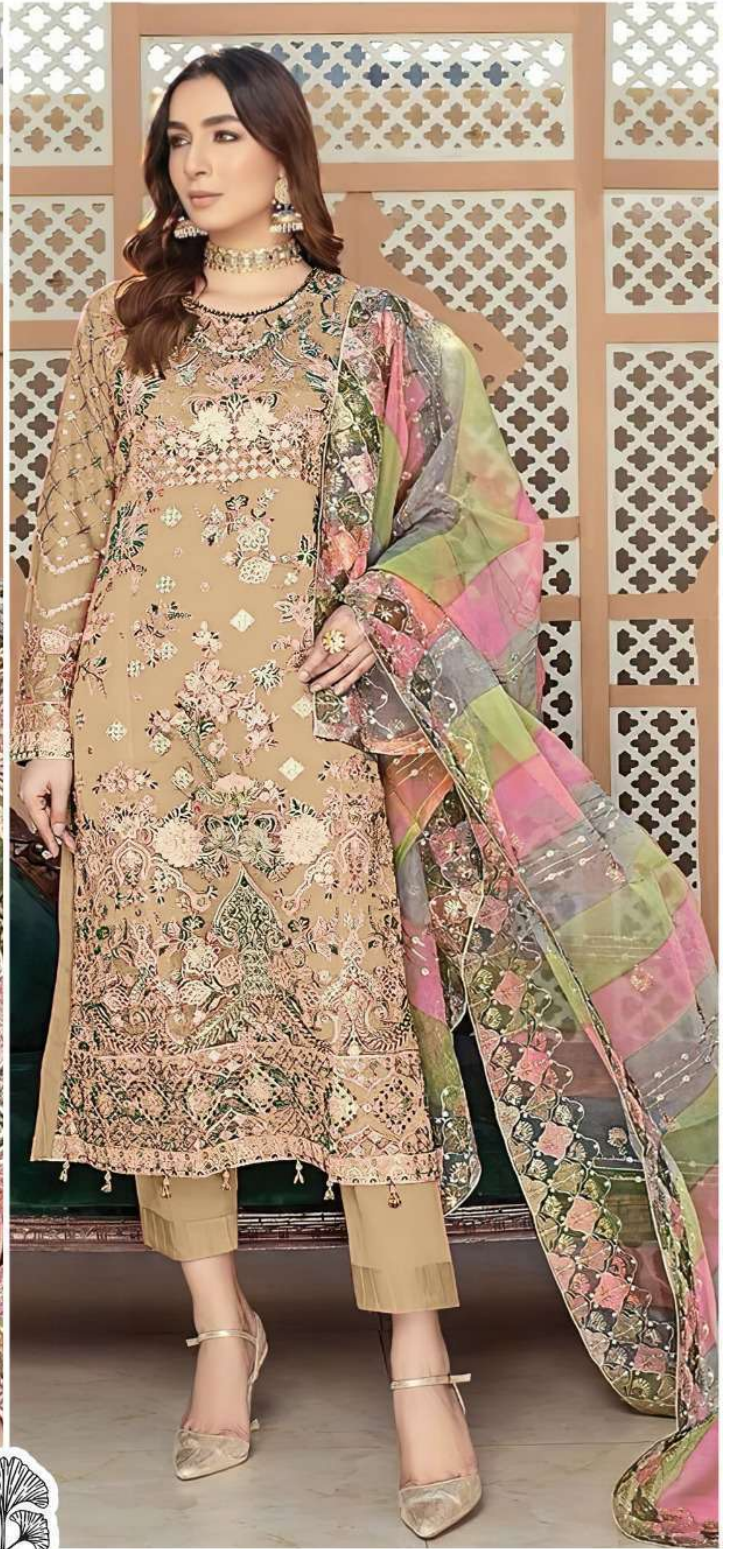
SANTOON

DUPATTA

ORGANZA EMBROIDERY

CARE INSTRUCTIONS

- Ⓟ Dry clean only
- ⚠ Do not use any bleach or stain removing chemical
- ☐ Iron the fabric at moderate temperature
- ⊗ Do not dry fabric in direct sunlight



ABEELA

ZAHA

D.No.10362-D

TOP

ORGANZA EMBROIDERY WORK

BOTTOM

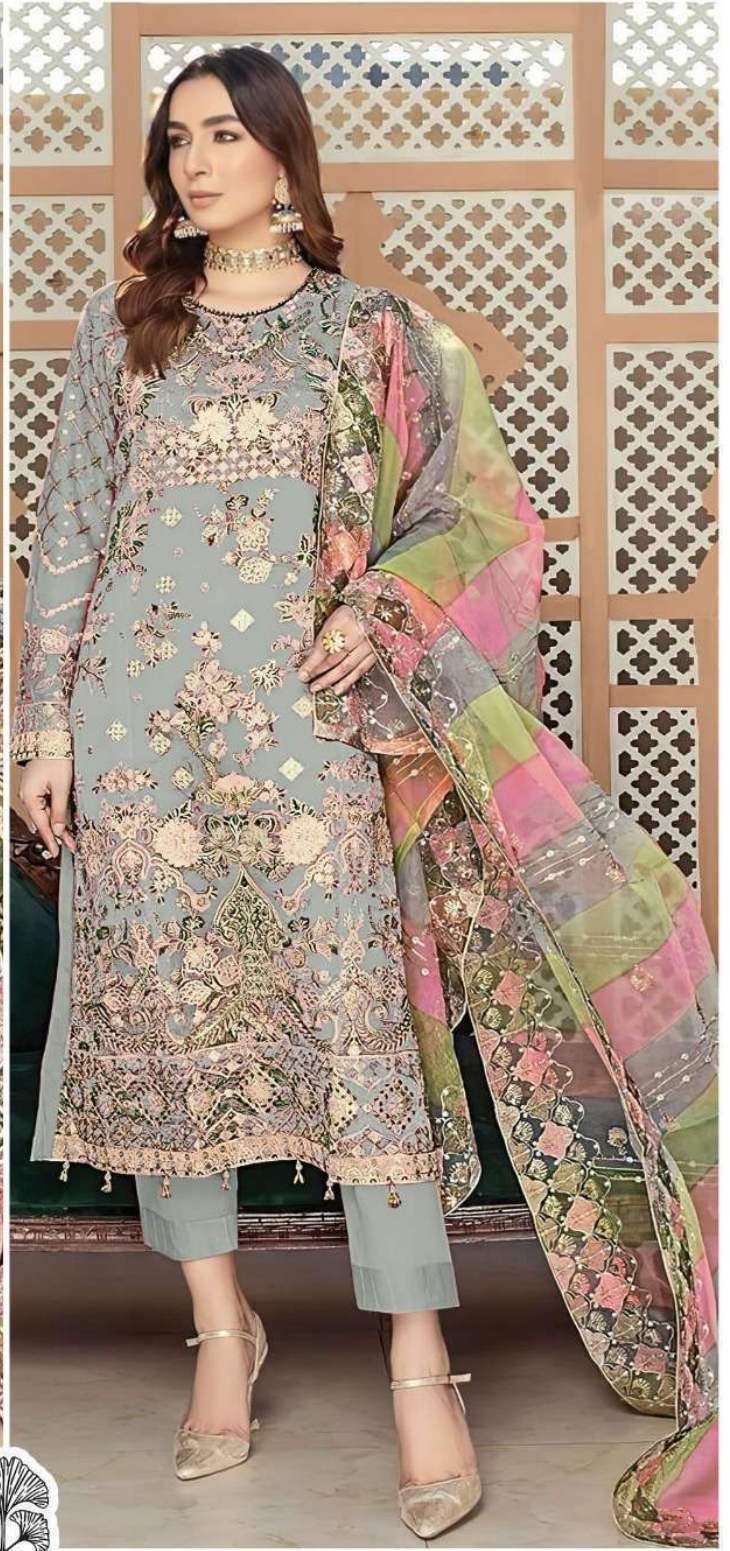
SANTOON

DUPATTA

ORGANZA EMBROIDERY

CARE INSTRUCTIONS

- Ⓟ Dry clean only
- ⚠ Do not use any bleach or stain removing chemical
- ☐ Iron the fabric at moderate temperature
- ⊗ Do not dry fabric in direct sunlight



ABEELA

ZAHA

D.No.10362-C

TOP

ORGANZA EMBROIDERY WORK

BOTTOM

SANTOON

DUPATTA

ORGANZA EMBROIDERY

CARE INSTRUCTIONS

- Ⓟ Dry clean only
- ⚠ Do not use any bleach or stain removing chemical
- ☐ Iron the fabric at moderate temperature
- ⊗ Do not dry fabric in direct sunlight