





**READYMADE
COLLECTION**
SIZE:- L-XL-XXL

TOP:- RAGGA ROMAN SILK SLUB CUT WORK WITH KHATLI
BOTTOM/INNER:- RAGGA ROMAN SILK SLUB WITH
BOTTOM WORK
DUPATTA:- ORGANZA WITH HEVY EMBROIDERY CUTWORK



MR-1012 A



MR-1012 B



MR-1012 C



MR-1012 D



MR-1012 D



READYMADE
COLLECTION

FEBRIC DETAIL

TOP:- RAGGA ROMAN SILK SLUB CUT WORK WITH KHATLI
BOTTOMINNER:- RAGGA ROMAN SILK SLUB WITH
BOTTOM WORK
DUPATTA:- ORGANZA WITH HEVY EMBROIDERY CUTWORK

☉ DRY CLEAN ONLY.
✘ DO NOT USE ANY BLEACH OR STAIN REMOVING CHEMICAL.
☹ IRON THE FABRIC AT MODERATE TEMPERATURE.





MR-1012 C



READYMADE
COLLECTION

FEBRIC DETAIL

TOP:- RAGGA ROMAN SILK SLUB CUT WORK WITH KHATLI
BOTTOMINNER:- RAGGA ROMAN SILK SLUB WITH
 BOTTOM WORK
DUPATTA:- ORGANZA WITH HEVY EMBROIDERY CUTWORK

☉ DRY CLEAN ONLY.
 ✖ DO NOT USE ANY BLEACH OR STAIN REMOVING CHEMICAL.
 ☼ IRON THE FABRIC AT MODERATE TEMPERATURE.





MR-1012 A



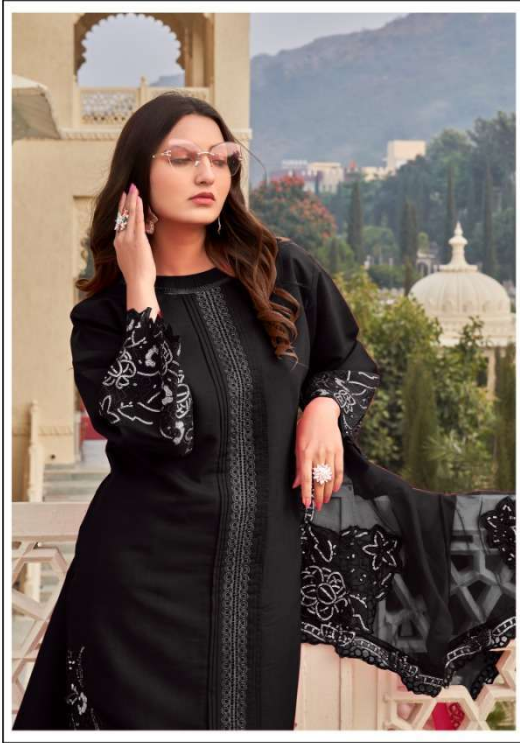
READYMADE
COLLECTION

FEBRIC DETAIL

TOP:- RAGGA ROMAN SILK SLUB CUT WORK WITH KHATLI
BOTTOMINNER:- RAGGA ROMAN SILK SLUB WITH
BOTTOM WORK
DUPATTA:- ORGANZA WITH HEVY EMBROIDERY CUTWORK

☉ DRY CLEAN ONLY.
✘ DO NOT USE ANY BLEACH OR STAIN REMOVING CHEMICAL.
☼ IRON THE FABRIC AT MODERATE TEMPERATURE.





MR-1012 B



READYMADE
COLLECTION

FEBRIC DETAIL

TOP:- RAGGA ROMAN SILK SLUB CUT WORK WITH KHATLI
BOTTOMINNER:- RAGGA ROMAN SILK SLUB WITH
BOTTOM WORK
DUPATTA:- ORGANZA WITH HEVY EMBROIDERY CUTWORK

☉ DRY CLEAN ONLY.
✘ DO NOT USE ANY BLEACH OR STAIN REMOVING CHEMICAL.
☹ IRON THE FABRIC AT MODERATE TEMPERATURE.

