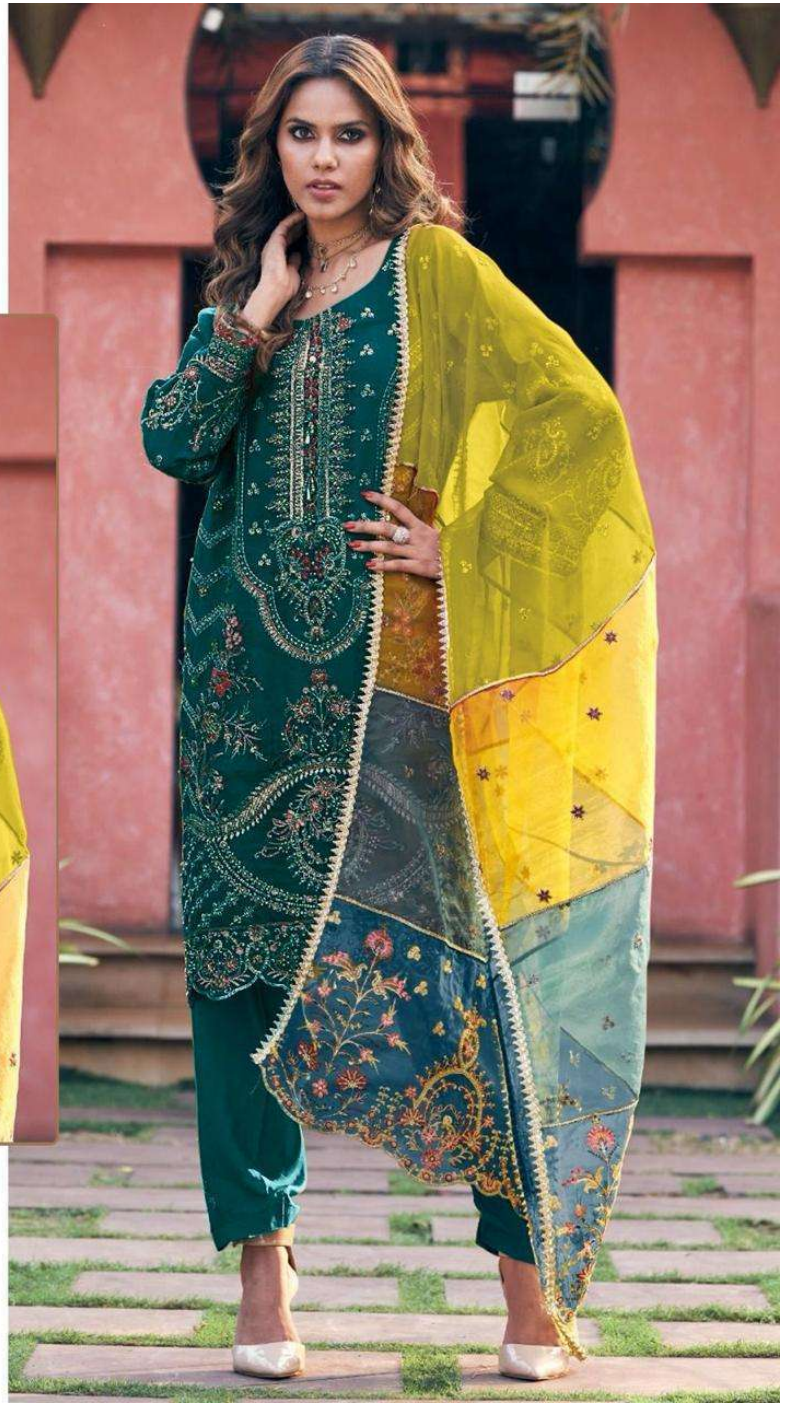
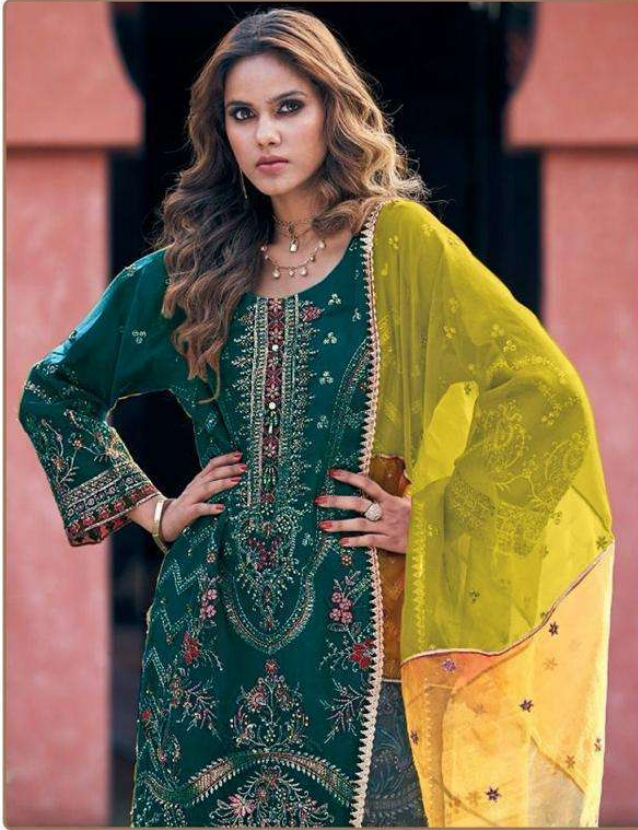




READYMAD
#R-1133-C



TOP- ORGENZA EMBROIDERY
BOTTOM - SILK STICH
DUPATTA - ORGENZA EMBROIDERY

Ⓟ DRY CLEAN ONLY.
ⓧ DO NOT USE ANY BLEACH OR STAIN REMOVING CHEMICAL.
Ⓜ IRON THE FABRIC AT MODERATE TEMPERATURE.



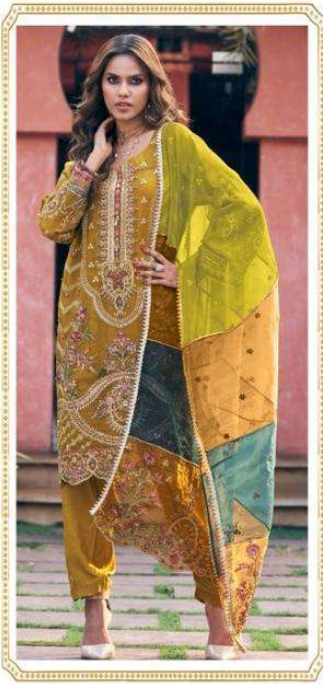
READYMAD
#R-1133-D



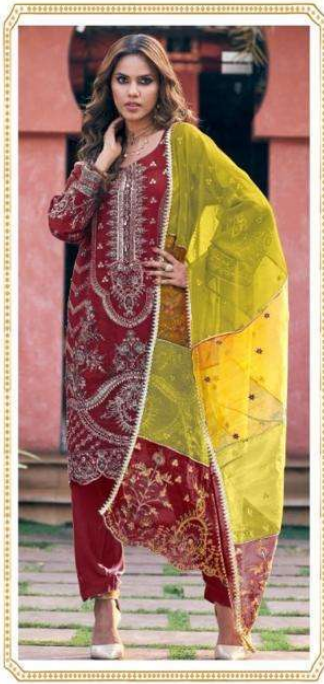
TOP- ORGENZA EMBROIDERY
BOTTOM - SILK STICH
DUPATTA - ORGENZA EMBROIDERY

Ⓟ DRY CLEAN ONLY.
ⓧ DO NOT USE ANY BLEACH OR STAIN REMOVING CHEMICAL.
Ⓡ IRON THE FABRIC AT MODERATE TEMPERATURE.

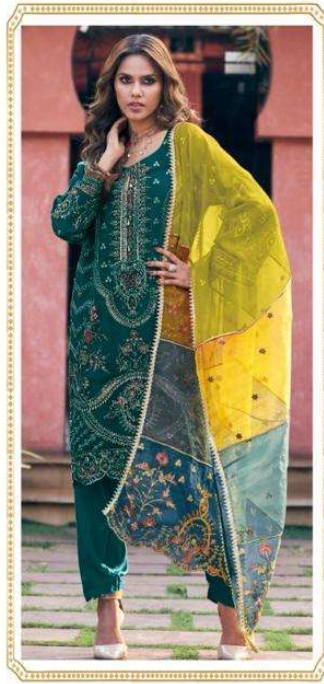




#R-1133-A



#R-1133-B



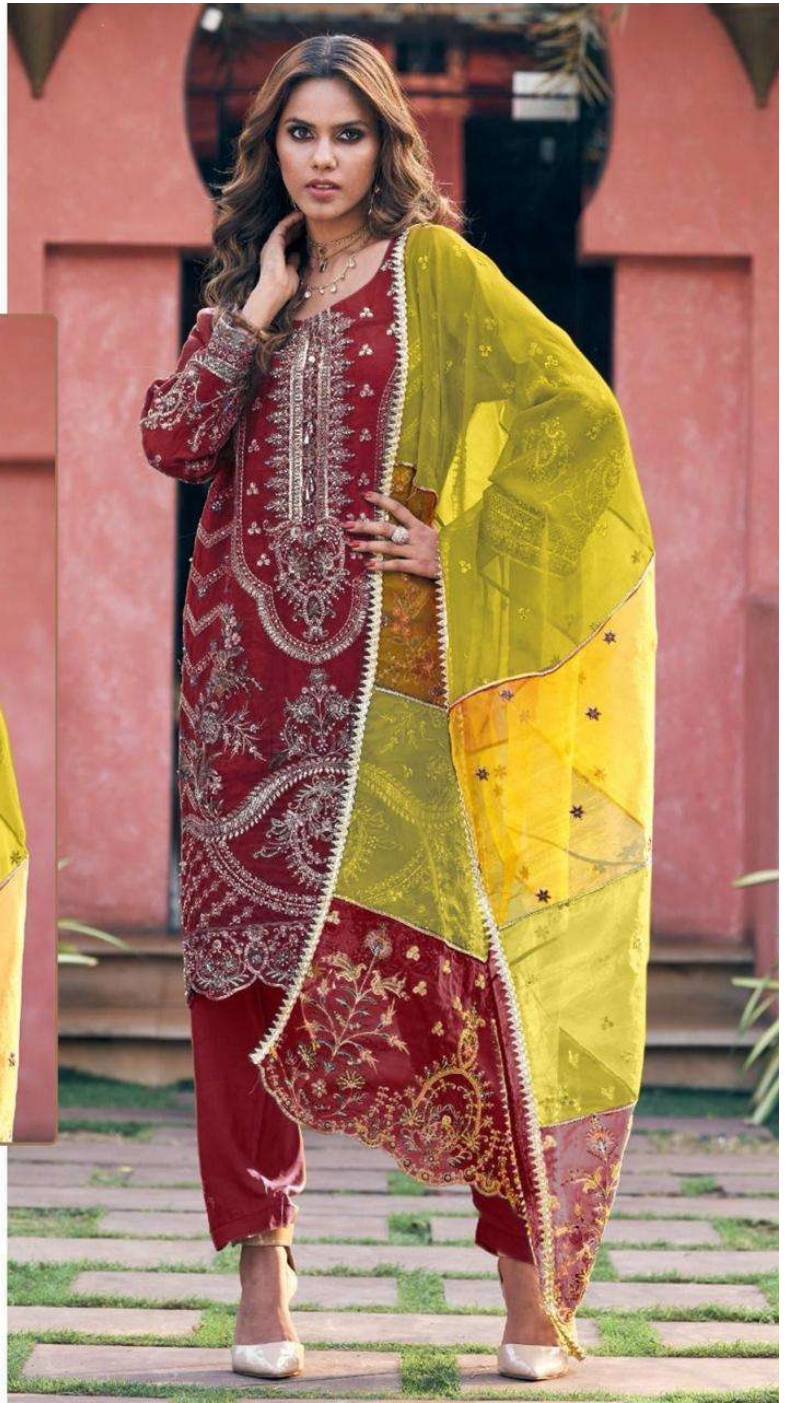
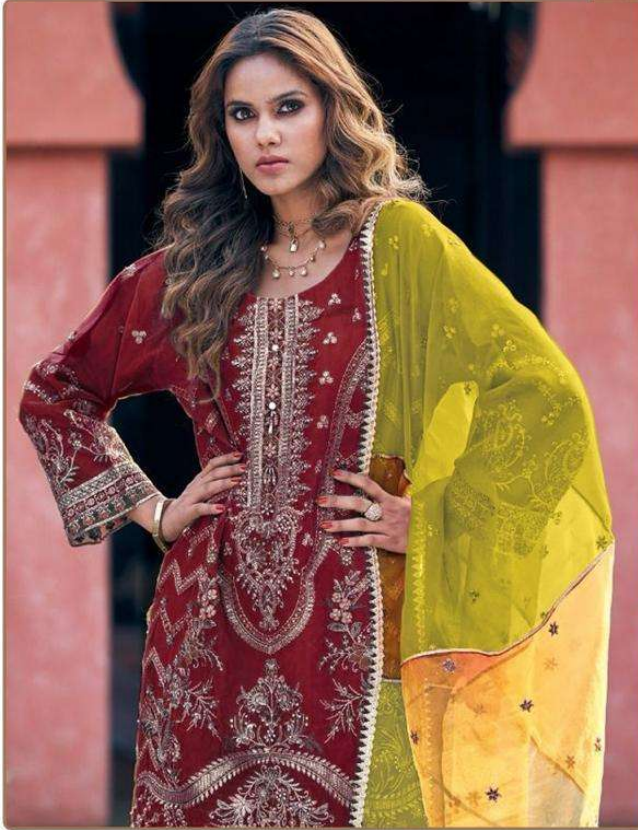
#R-1133-C



#R-1133-D



READYMAD
#R-1133-B

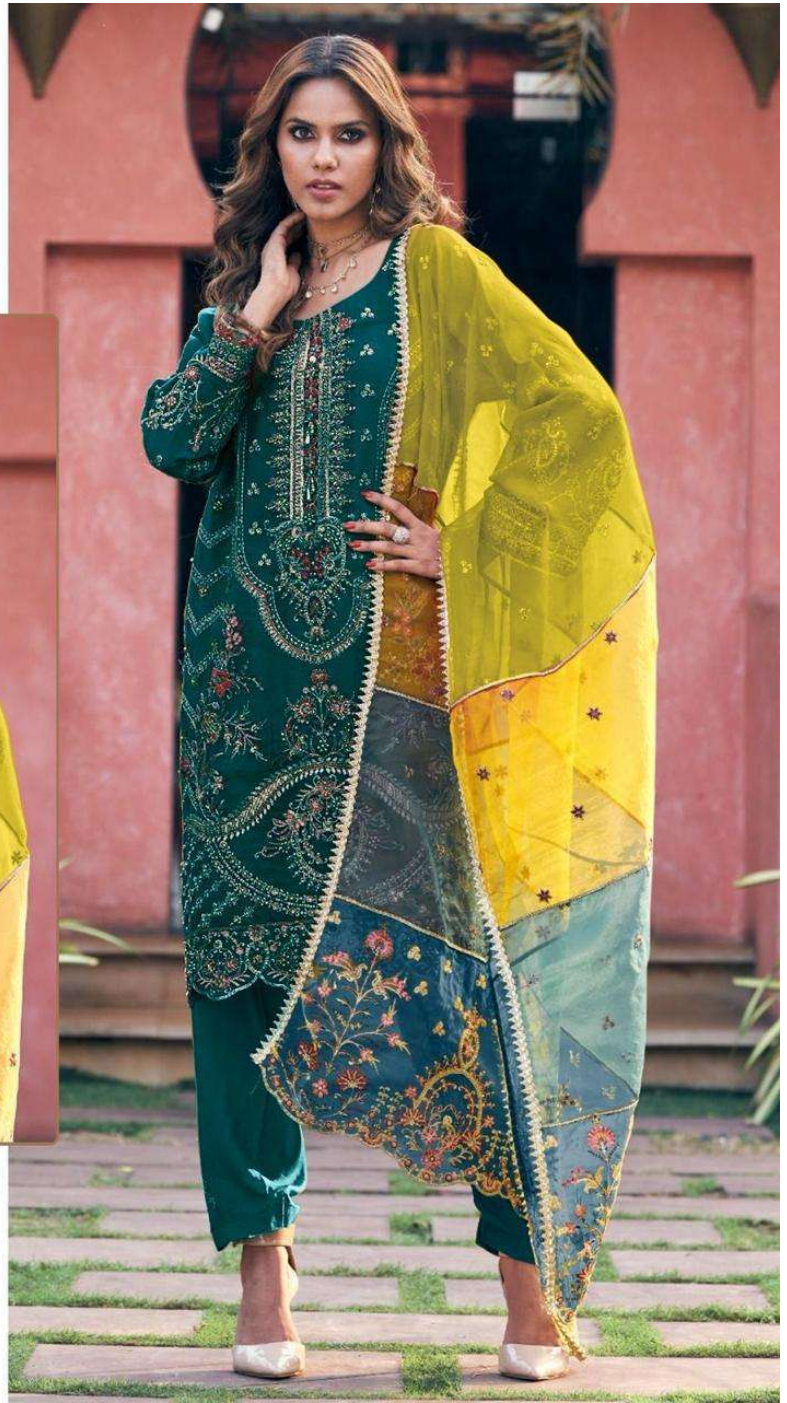


TOP- ORGENZA EMBROIDERY
BOTTOM - SILK STICH
DUPATTA - ORGENZA EMBROIDERY

Ⓟ DRY CLEAN ONLY.
ⓧ DO NOT USE ANY BLEACH OR STAIN REMOVING CHEMICAL.
🧊 IRON THE FABRIC AT MODERATE TEMPERATURE.



READYMAD
#R-1133-C

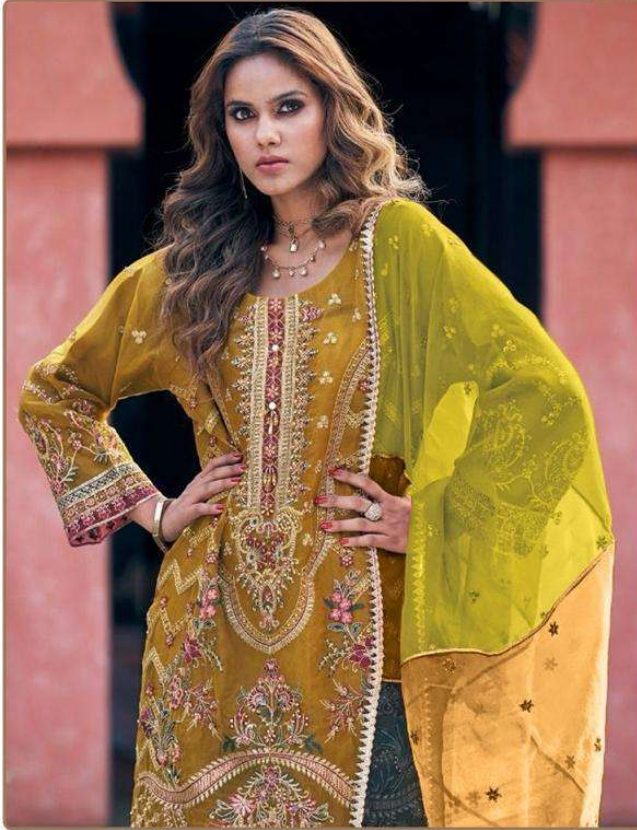


TOP- ORGENZA EMBROIDERY
BOTTOM - SILK STICH
DUPATTA - ORGENZA EMBROIDERY

Ⓟ DRY CLEAN ONLY.
ⓧ DO NOT USE ANY BLEACH OR STAIN REMOVING CHEMICAL.
Ⓜ IRON THE FABRIC AT MODERATE TEMPERATURE.



READYMAD
#R-1133-A



TOP- ORGENZA EMBROIDERY
BOTTOM - SILK STICH
DUPATTA - ORGENZA EMBROIDERY

Ⓟ DRY CLEAN ONLY.
ⓧ DO NOT USE ANY BLEACH OR STAIN REMOVING CHEMICAL.
Ⓡ IRON THE FABRIC AT MODERATE TEMPERATURE.

