





**25308**

Surce Style : Ready to wear  
Fabric : Two Tone Satin Silk  
Work : Pearl with Handwork  
Accessories : Cloak Blouse, Bel



**25318**

Saree Style : Ready to wear  
Fabric : Five Tane Satin Silk  
Work : Dual Sequins  
with Pearl Work  
Accessories : Blouse, Poncho, Belt



25316

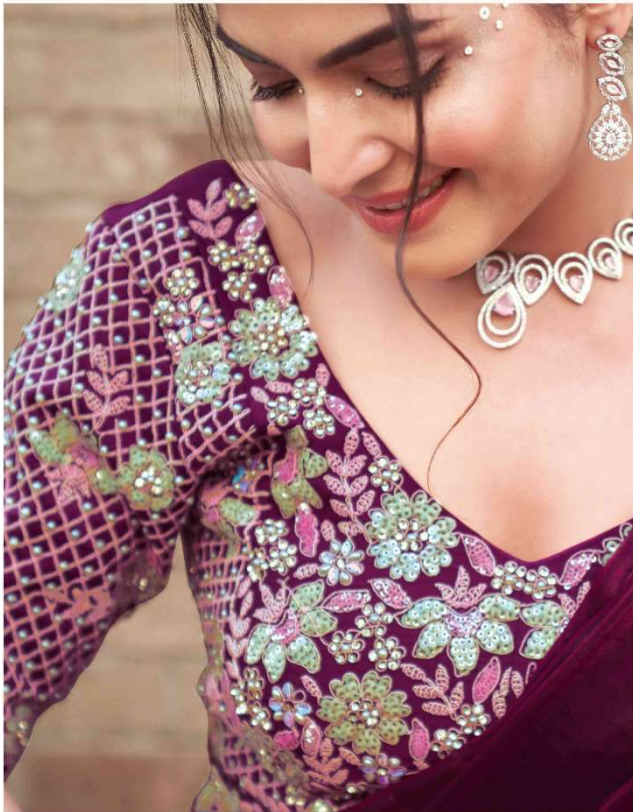
Saree Style : Ready to wear  
Fabric : Crepe Satin Silk  
Work : Pearl with Handwork  
Accessories : Two Blouses, Belt



25317

Saree Style : Ready to wear  
Fabric : Two Tone Satin Silk  
Work : Four Sequins  
with Handwork  
Accessories : Blouse, Belt





25314

Saree Style : Ready to wear  
Fabric : Two Tone Satin Silk  
Work : Dual Sequins  
with Pearl and Hand Work  
Accessories : Blouse, Belt







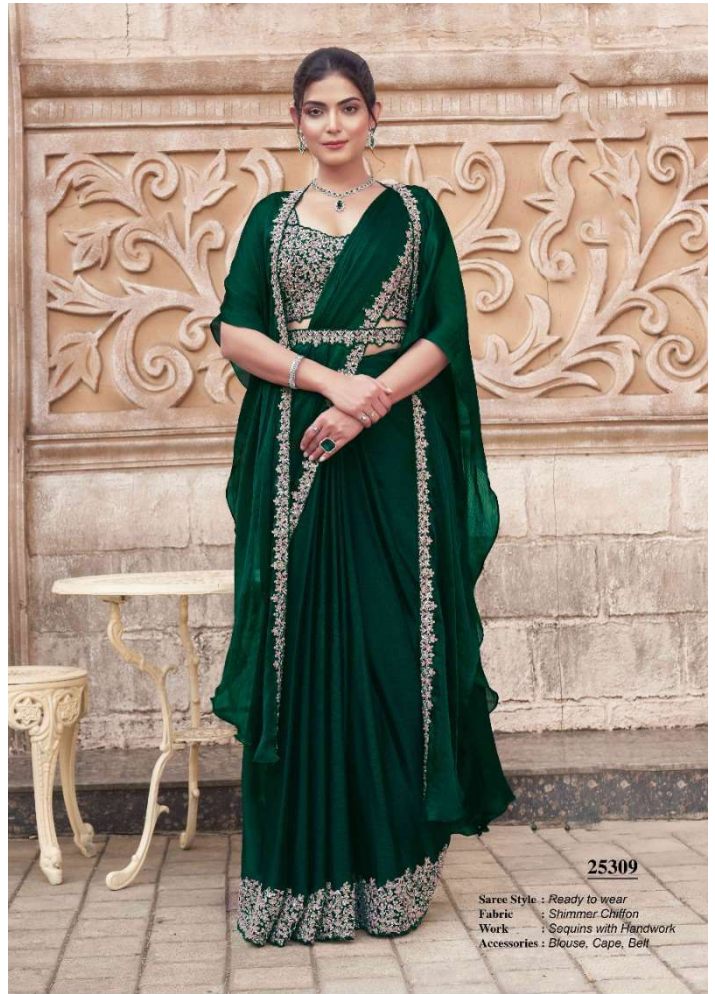
**25311**

Saree Style : Ready to wear  
Fabric : Crepe Satin Silk  
Work : Crepe Satin Silk  
Accessories : Blouse, Poncho, Belt



**25310**

Saree Style: Ready To wear  
Fabric: Crepe Satin, Silk  
Work: Pearl with Handwork  
Accessories: Blouse, Belt



**25309**

Saree Style : Ready to wear  
Fabric : Shimmer Chiffon  
Work : Sequins with Handwork  
Accessories : Blouse, Cape, Belt