

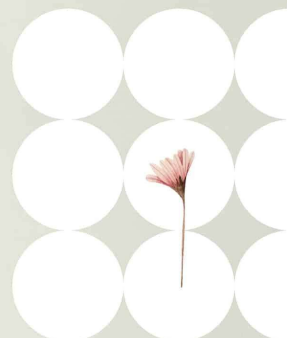


# SONNET





KIMORA'S  
**Sohmi**<sup>TM</sup>



••• dare to dazzle

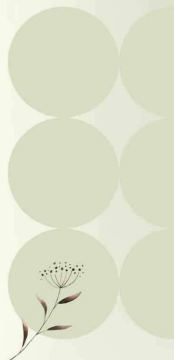


this season our muse is a little bolder.  
she is sensuous, statuesque, elegant, majestic and flamboyant.  
she carries out her inner sense of confidence with grace.





• • • dream to excel



You can never go wrong with the red  
dress at evening party; attention is all yours!



• • • dare to dazzle



362

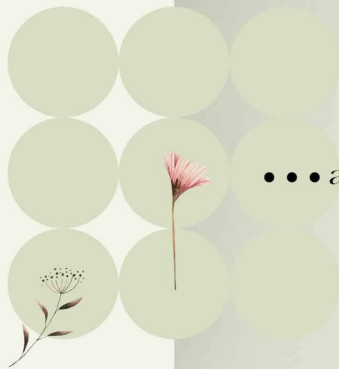
You can never go wrong with the yellow dress at evening party;  
attention is all yours!



• • • happy to blaze

KIMORA'S  
**Sohni**





• • • amaze to wonders

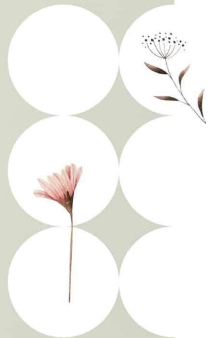


pastel being the preferable pick of the season has become every  
to-be bride's game changing ensemble.





... chase to spark



364

featuring all dramatic elements, this black dress stands  
as a showstopper from the season's collection.





featuring all dramatic elements,  
this black dress stands as a showstopper  
from the season's collection.



# SONNET

## TOP

PURE COTTON LAWN WITH DIGITAL PRINT  
EMBROIDERY NECKLINE AND ORGANZA  
SCALLOPED EMBROIDERY BORDER FOR  
HEMLINE AND SLEEVE

## DUPATTA

PURE BAMBER MULMUL WITH DIGITAL PRINT  
AND FOUR SIDE HAND CRAFTED TASSELS

## BOTTOM

PURE COTTON

**kimora®**





361



362



363



364



Sohni~Sonnet~Vol-29		
SR.NO.	DESIGN NO	RATE
1	D.NO.361	1750.00
2	D.NO.362	1750.00
3	D.NO.363	1750.00
4	D.NO.364	1750.00
TOTAL :-		7000.00