



KIMORA'S  
Sohni

CORA



~ 381 ~



~ 382 ~



~ 383 ~



~ 384 ~



# CORA

## TOP

TOP PURE MUSLIN DIGITAL PRINT ,  
RESHAM BUTTI FRONT ,  
SCALLOPED RESHAM EMBROIDERY ORGANZA  
APPLIQUED BORDER HEMLINE AND SLEEVE

## DUPATTA

PURE CHINNON WITH DIGITAL PRINT AND  
FOUR HAND CRAFTED TASSELS

## BOTTOM

PURE MUSLIN HEAVY

**kimora®**







381

KIMORA'S  
**Sohpi**















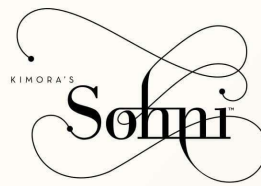
KIMORA'S  
**Sohni**



Beautifully made for **CELEBRATIONS**







●● *radiate confidence and charm*

Step into elegance with vibrant hues, flowing silhouettes, and traditional touches crafted for unforgettable festive celebrations.





●● *celebrate in radiant "style"*

Celebrate every occasion with grace and glamour in our festive  
dress collection, designed to light up your moments.

381  
~~~~~

KIMORA'S  
*Sohni*

Celebration Couture **COLLECTION**

