

WASHING INSTRUCTIONS

DO NOT USE TYPE OF BLEACH OR STAIN REMOVING CHEMICALS
BEFORE CUTTING / STITCHING, FABRIC SHOULD BE SOAKED IN WATER
(ALL COMPONENTS SEPARATELY) FOR 15 MINUTES
DO NOT KEEP WET FABRIC IN TWISTED FORM IN ORDER TO AVOID COPY MARKS |
IRON CLOTHES AT MODERATE TEMPERATURE | DO NOT DRY FABRIC IN DIRECT SUNLIGHT
(EXTRA LACES, HANGINGS AND ACCESSORIES ARE NOT INCLUDED)

ROSE
Hand Craft

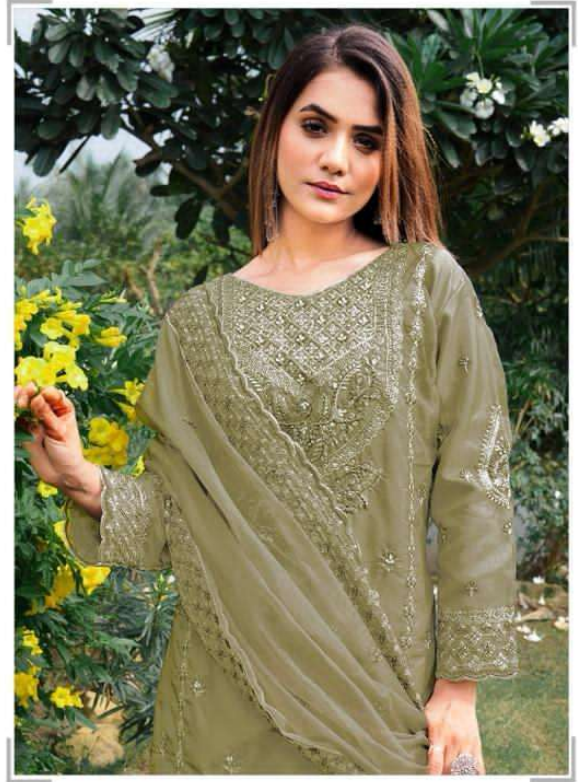
S-224 C



FABRIC DETAILS

TOP:- ORGANZA TISSUE
INNER:- DULL SENTOON
DUP:- ORGANZA TISSUE
BOT:- DULL SENTOON





WASHING INSTRUCTIONS

DO NOT USE TYPE OF BLEACH OR STAIN REMOVING CHEMICALS
BEFORE CUTTING / STITCHING, FABRIC SHOULD BE SOAKED IN WATER
(ALL COMPONENTS SEPARATELY) FOR 15 MINUTES
DO NOT KEEP WET FABRIC IN TWISTED FORM IN ORDER TO AVOID COPY MARKS |
IRON CLOTHES AT MODERATE TEMPERATURE | DO NOT DRY FABRIC IN DIRECT SUNLIGHT
(EXTRA LACES, HANGINGS AND ACCESSORIES ARE NOT INCLUDED)

ROSE
Hand Craft

S-224 D



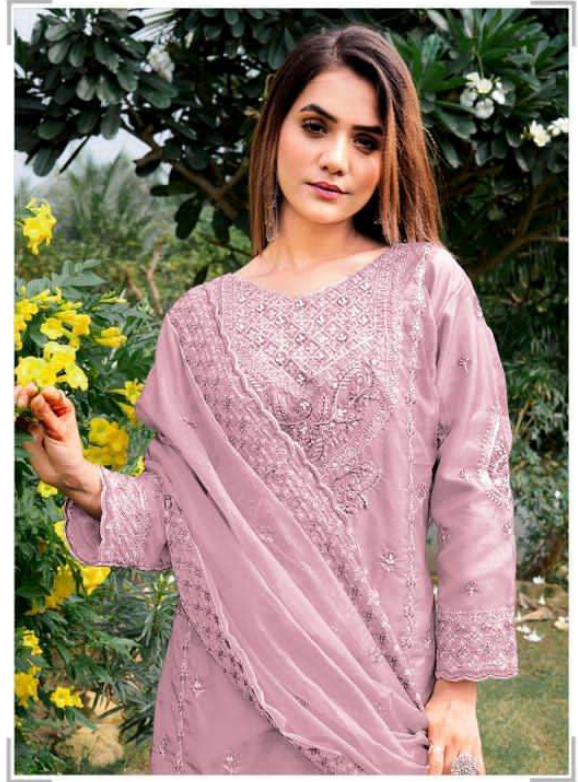
FABRIC DETAILS

TOP:- ORGANZA TISSUE
INNER:- DULL SENTOON
DUP:- ORGANZA TISSUE
BOT:- DULL SENTOON





SHANAYA[®]



WASHING INSTRUCTIONS

DO NOT USE TYPE OF BLEACH OR STAIN REMOVING CHEMICALS
BEFORE CUTTING / STITCHING, FABRIC SHOULD BE SOAKED IN WATER
(ALL COMPONENTS SEPARATELY) FOR 15 MINUTES
DO NOT KEEP WET FABRIC IN TWISTED FORM IN ORDER TO AVOID COPY MARKS |
IRON CLOTHES AT MODERATE TEMPERATURE | DO NOT DRY FABRIC IN DIRECT SUNLIGHT
(EXTRA LACES, HANGINGS AND ACCESSORIES ARE NOT INCLUDED)

ROSE
Hand Craft

S-224 B



FABRIC DETAILS

TOP:- ORGANZA TISSUE
INNER:- DULL SENTOON
DUP:- ORGANZA TISSUE
BOT:- DULL SENTOON













ROSE
Hand Craft

TOP:- ORGANZA TISSUE
INNER:- DULL SENTOON
DUP:- ORGANZA TISSUE
BOT:- DULL SENTOON



S-224 A



S-224 B



S-224 C



S-224 D



WASHING INSTRUCTIONS

DO NOT USE TYPE OF BLEACH OR STAIN REMOVING CHEMICALS
BEFORE CUTTING / STITCHING, FABRIC SHOULD BE SOAKED IN WATER
(ALL COMPONENTS SEPARATELY) FOR 15 MINUTES
DO NOT KEEP WET FABRIC IN TWISTED FORM IN ORDER TO AVOID COPY MARKS |
IRON CLOTHES AT MODERATE TEMPERATURE | DO NOT DRY FABRIC IN DIRECT SUNLIGHT
(EXTRA LACES, HANGINGS AND ACCESSORIES ARE NOT INCLUDED)

ROSE
Hand Craft

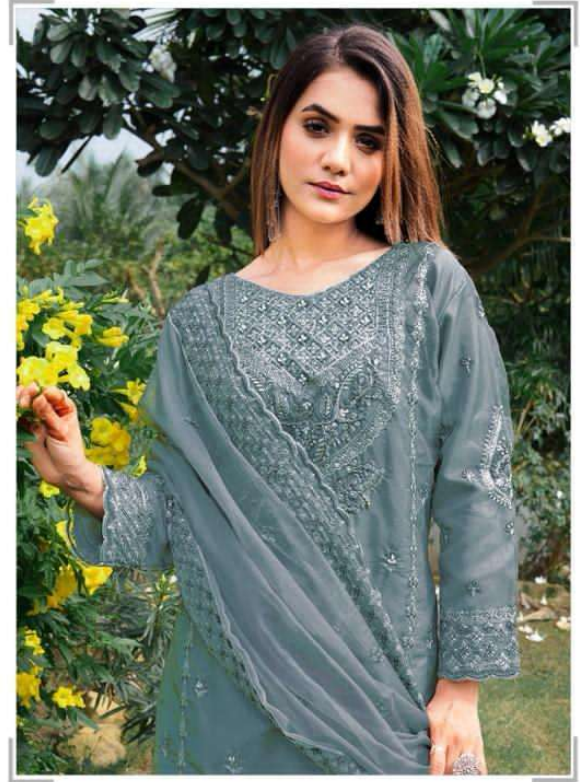
S-224 A



FABRIC DETAILS

TOP:- ORGANZA TISSUE
INNER:- DULL SENTOON
DUP:- ORGANZA TISSUE
BOT:- DULL SENTOON





WASHING INSTRUCTIONS

DO NOT USE TYPE OF BLEACH OR STAIN REMOVING CHEMICALS
BEFORE CUTTING / STITCHING, FABRIC SHOULD BE SOAKED IN WATER
(ALL COMPONENTS SEPARATELY) FOR 15 MINUTES
DO NOT KEEP WET FABRIC IN TWISTED FORM IN ORDER TO AVOID COPY MARKS |
IRON CLOTHES AT MODERATE TEMPERATURE | DO NOT DRY FABRIC IN DIRECT SUNLIGHT
(EXTRA LACES, HANGINGS AND ACCESSORIES ARE NOT INCLUDED)

ROSE
Hand Craft

S-224 C



FABRIC DETAILS

TOP:- ORGANZA TISSUE
INNER:- DULL SENTOON
DUP:- ORGANZA TISSUE
BOT:- DULL SENTOON

