



M-356 D



#### FEBRIC DETAIL

**TOP:-** PURE DULL ORGANZA EMBROIDERED WORK  
WITH MOTI WORK

**BOTTOMINNER:-** SANTOON WITH PECH WORK

**DUPATTA:-** PURE ORGANZA WITH EMBROIDERED WORK  
WITH CUT WORK

☞ DRY CLEAN ONLY.  
☞ DO NOT USE ANY BLEACH OR STAIN REMOVING CHEMICAL.  
☞ IRON THE FABRIC AT MODERATE TEMPERATURE.



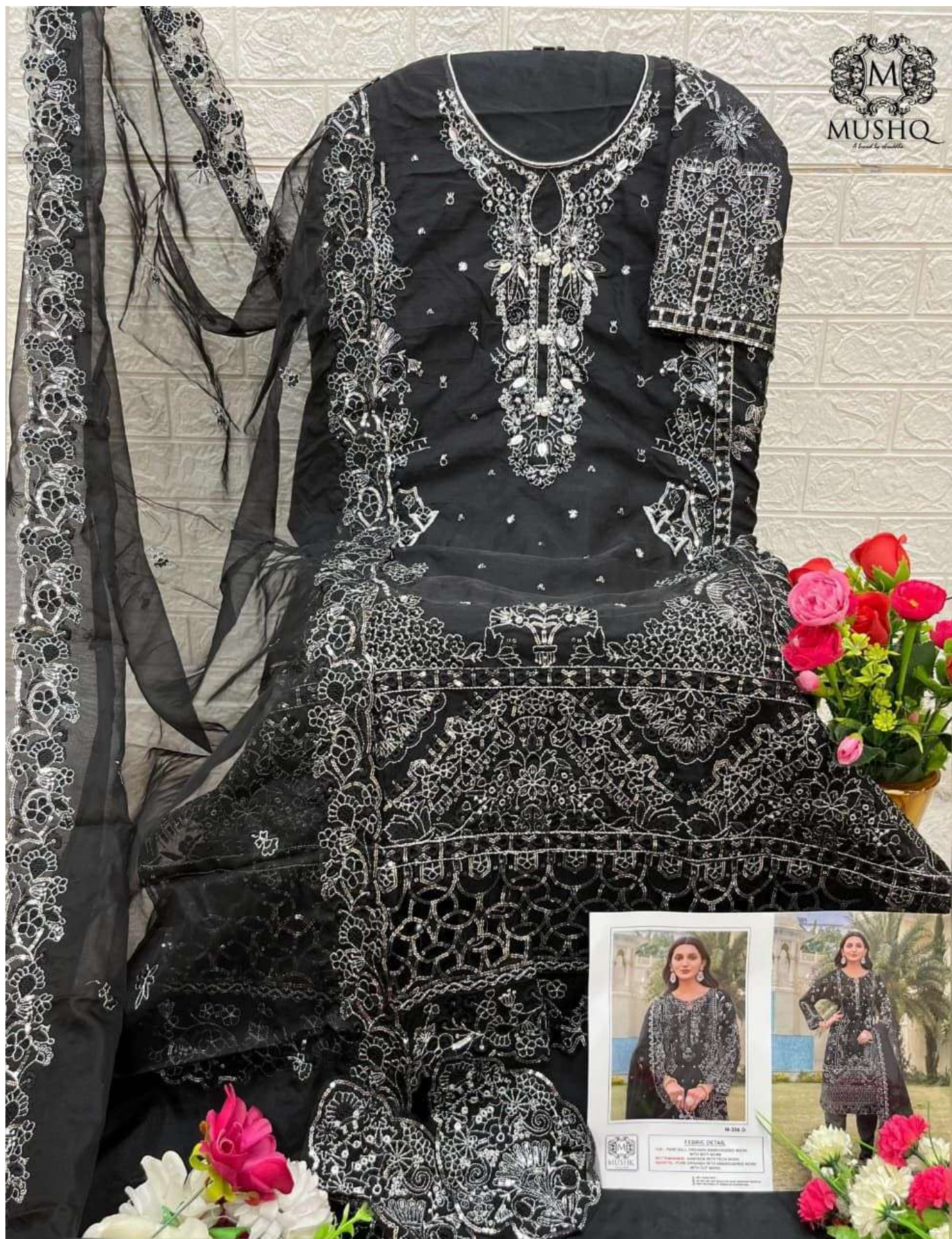




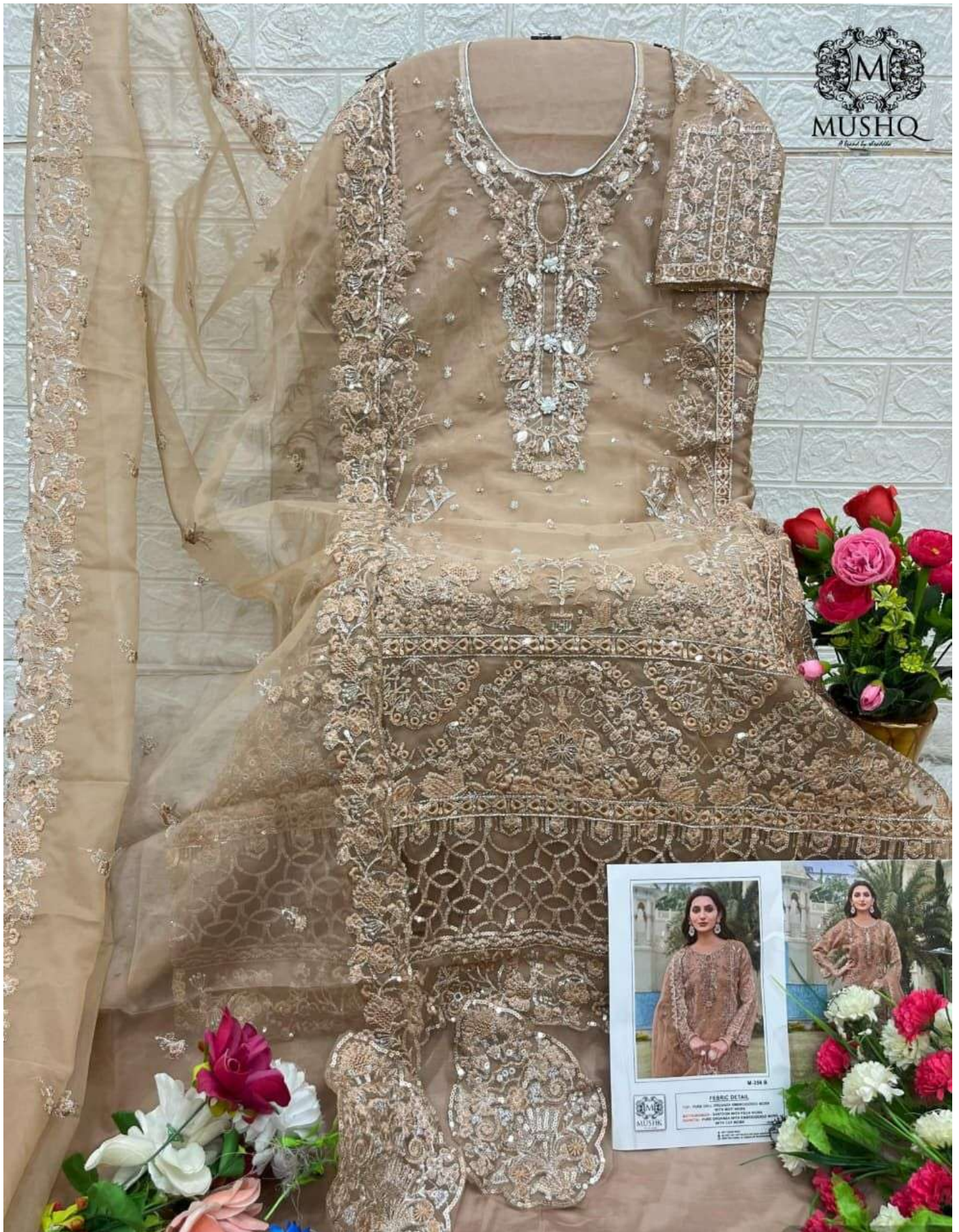
















**TOP:-** PURE DULL ORGANZA EMBROIDERED WORK  
WITH MOTI WORK  
**BOTTOM/INNER:-** SANTOON WITH PECH WORK  
**DUPATTA:-** PURE ORGANZA WITH EMBROIDERED WORK  
WITH CUT WORK



M-356 A



M-356 B



M-356 C



M-356 D



M-356 B



#### FEBRIC DETAIL

**TOP:-** PURE DULL ORGANZA EMBROIDERED WORK  
WITH MOTI WORK

**BOTTOMINNER:-** SANTOON WITH PECH WORK

**DUPATTA:-** PURE ORGANZA WITH EMBROIDERED WORK  
WITH CUT WORK

☞ DRY CLEAN ONLY.  
☞ DO NOT USE ANY BLEACH OR STAIN REMOVING CHEMICAL.  
☞ IRON THE FABRIC AT MODERATE TEMPERATURE.







M-356 D



#### FEBRIC DETAIL

**TOP:-** PURE DULL ORGANZA EMBROIDERED WORK  
WITH MOTI WORK

**BOTTOMINNER:-** SANTOON WITH PECH WORK

**DUPATTA:-** PURE ORGANZA WITH EMBROIDERED WORK  
WITH CUT WORK

☞ DRY CLEAN ONLY.  
☞ DO NOT USE ANY BLEACH OR STAIN REMOVING CHEMICAL.  
☞ IRON THE FABRIC AT MODERATE TEMPERATURE.







M-356 C



#### FEBRIC DETAIL

**TOP:-** PURE DULL ORGANZA EMBROIDERED WORK  
WITH MOTI WORK

**BOTTOMINNER:-** SANTOON WITH PECH WORK

**DUPATTA:-** PURE ORGANZA WITH EMBROIDERED WORK  
WITH CUT WORK

☞ DRY CLEAN ONLY.  
☞ DO NOT USE ANY BLEACH OR STAIN REMOVING CHEMICAL.  
☞ IRON THE FABRIC AT MODERATE TEMPERATURE.

