

Ganga®  
S4650-B



Ganga®  
S4650-B



Ganga®  
S4650-A





S4650-A



S4650-B



S4650-C



S4650-D

Ganga®  
Gynela  
S4650- A/B/C/D

Ganga®  
S4650-C



Ganga®  
S4650-B



Ganga®  
S4650-D



Ganga®  
S4650-D



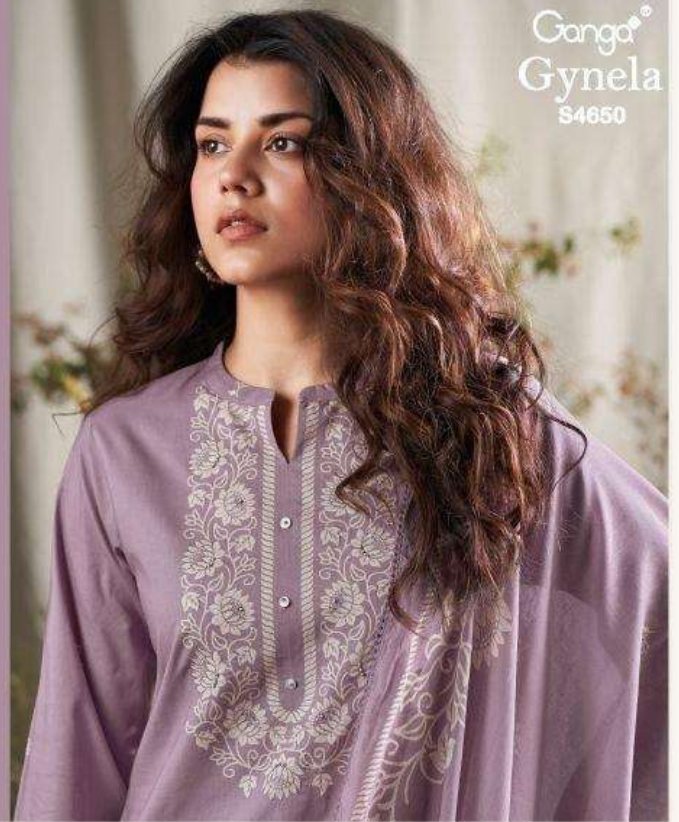
Ganga®  
S4650-A



Ganga®

Ganga®  
Gynela  
S4650

Gynela  
S4650



## DESCRIPTION

### ~TOP~

PREMIUM COTTON PRINTED WITH HAND EMBROIDERY,  
EMBROIDERY LACE ON DAMAN & SLEEVES,  
BUTTON WORK, HAND WORK.

### ~BOTTOM~

PREMIUM COTTON SOLID COLOR

### ~DUPATTA~

PREMIUM COTTON MUL PRINTED WITH CROCHET  
LACE BORDER.

**WHOLESALE PRICE**  
**1620/- EACH+GST(EXTRA)**

HSN CODE- 520851

MOQ : 64 PCS

TOTAL SUITS-04

Ganga®  
S4650-C

