

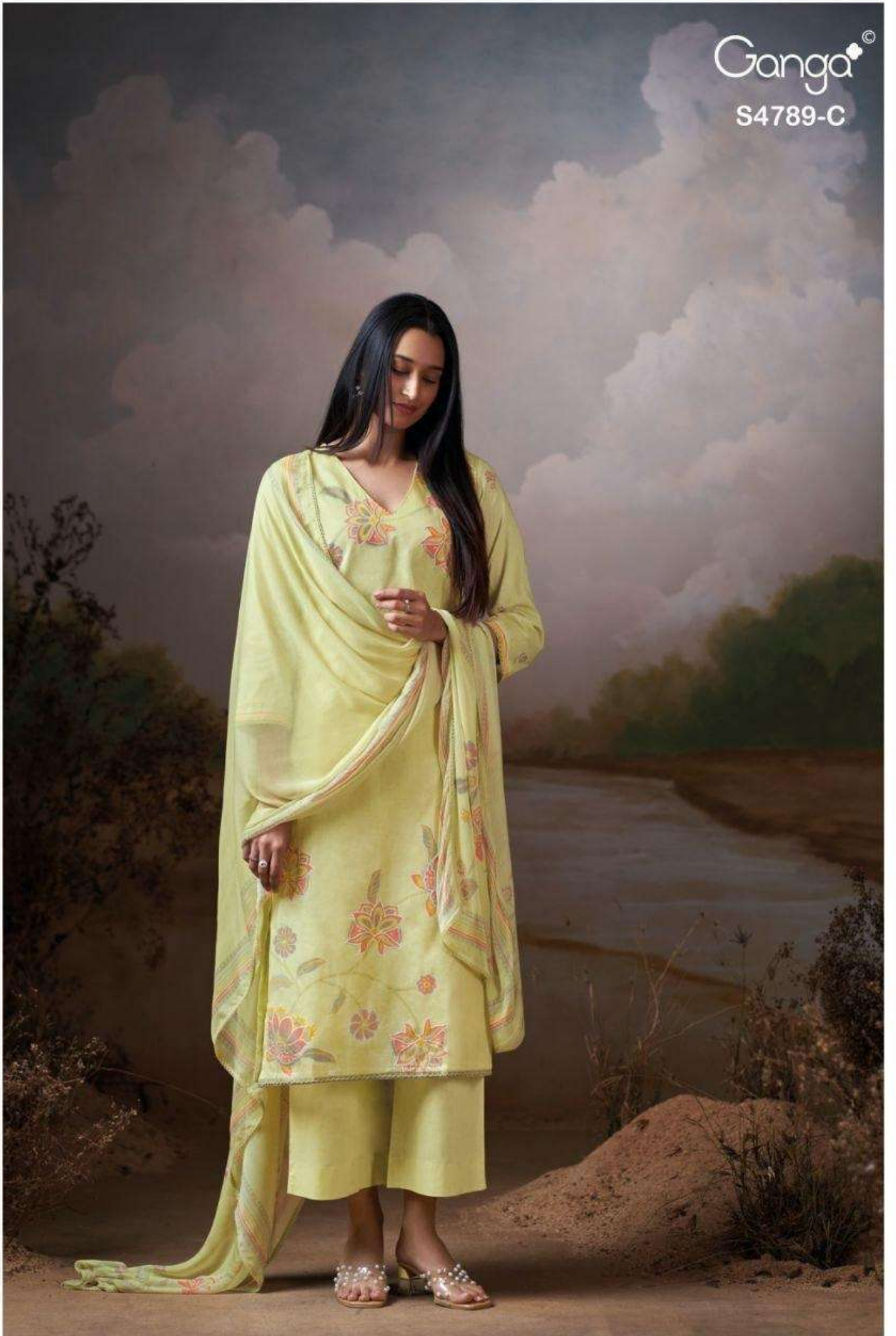
Ganga[®]
Dovina
S4789



A woman with long, dark hair is wearing a light yellow saree with intricate floral embroidery in red, green, and blue. The saree has a matching blouse with a large floral motif. The background is a soft, out-of-focus grey.

Ganga[®]
Dovina
S4789

Ganga[®]
S4789-C



Ganga[©]
S4789-A



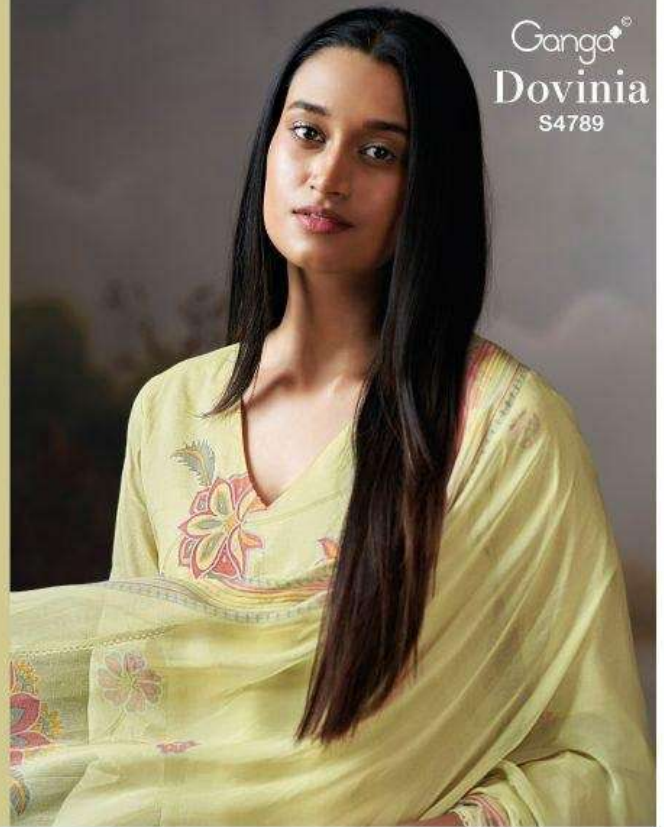
Ganga[®]
S4789-D



Ganga®

Dovinia
S4789

Ganga®
Dovinia
S4789



DESCRIPTION

~TOP~

PREMIUM PURE ORGANDY MUL PRINTED WITH HAND EMBROIDERY, SCHIFFLI EMBROIDERY LACE ON DAMAN & SLEEVES.

~INNER~

PREMIUM COTTON MUL SOLID COLOR

~BOTTOM~

PREMIUM COTTON SOLID COLOR

~DUPATTA~

PREMIUM PURE CHIFFON PRINTED WITH CROCHET LACE BORDER.

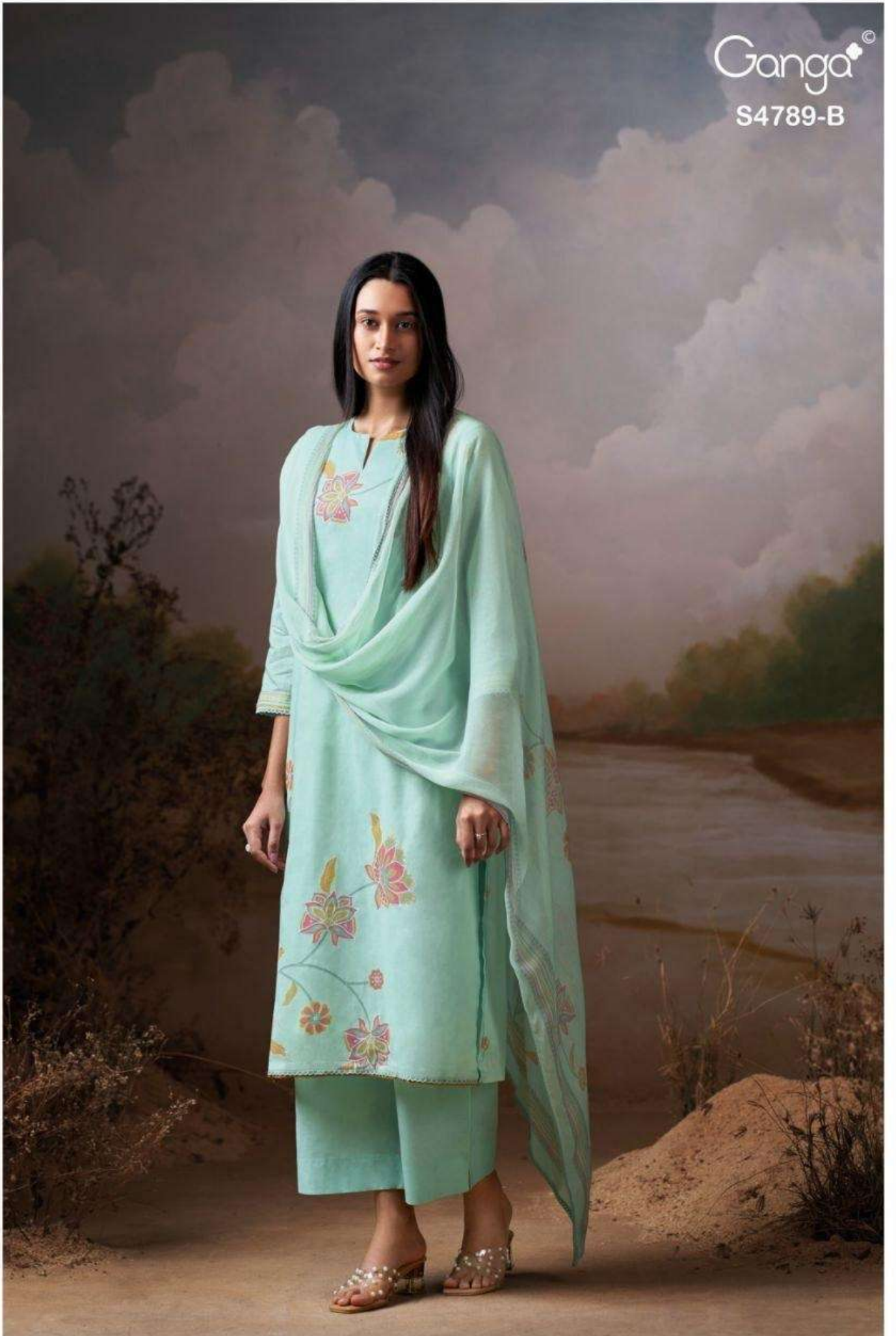
WHOLESALE PRICE
1910/- EACH+GST(EXTRA)

HSN CODE- 520851

MOQ : 64 PCS

TOTAL SUITS-04

Ganga[®]
S4789-B





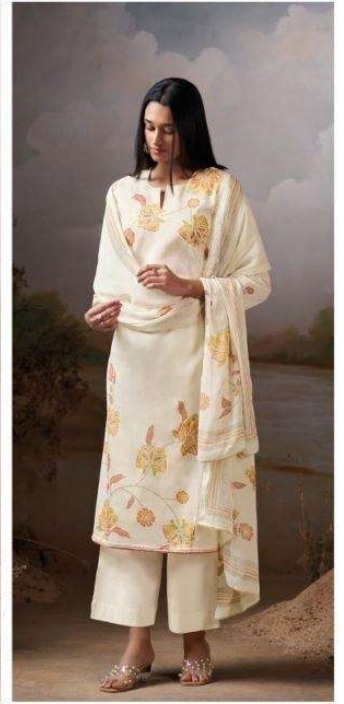
S4789-A



S4789-B



S4789-C



S4789-D

Ganga®
Dovinia
S4789- A/B/C/D