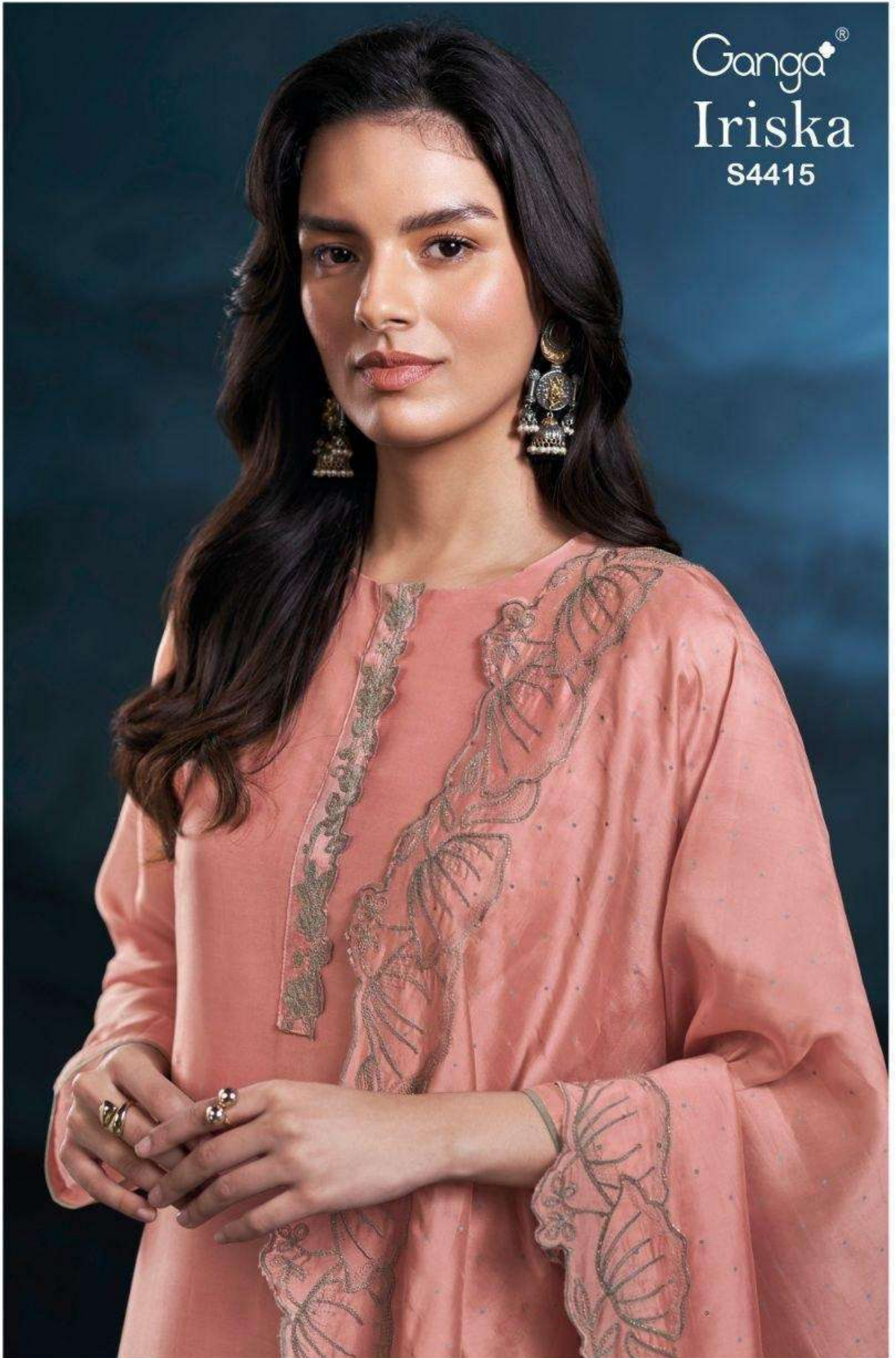


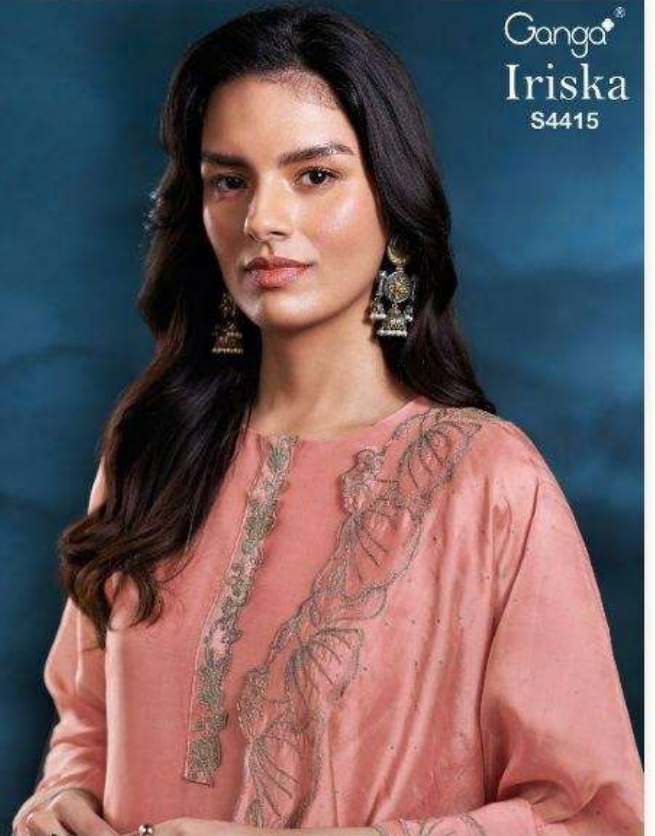
Ganga®
Iriska
S4415



Ganga®

Ganga®
Iriska
S4415

Iriska
S4415



DESCRIPTION

~TOP~

PREMIUM PURE BEMBERG SILK SATIN SOLID COLOR
WITH EMBROIDERY, EMBROIDERY LACE ON NECK,
CUT WORK.

~BOTTOM~

PREMIUM VISCOSE SILK SOLID COLOR.

~DUPATTA~

PREMIUM PURE BEMBERG SILK SATIN PRINTED WITH
EMBROIDERY, HAND EMBROIDERY. CUT WORK.

WHOLESALE PRICE
2580/- EACH+GST(EXTRA)

HSN CODE- 540834

MOQ : 64 PCS

TOTAL SUITS-02



S4415-A



S4415-B



Ganga®
Iriska
S4415- A/B

Ganga®
S4415-B



Ganga®
S4415-A



Ganga®
Iriska
S4415

