

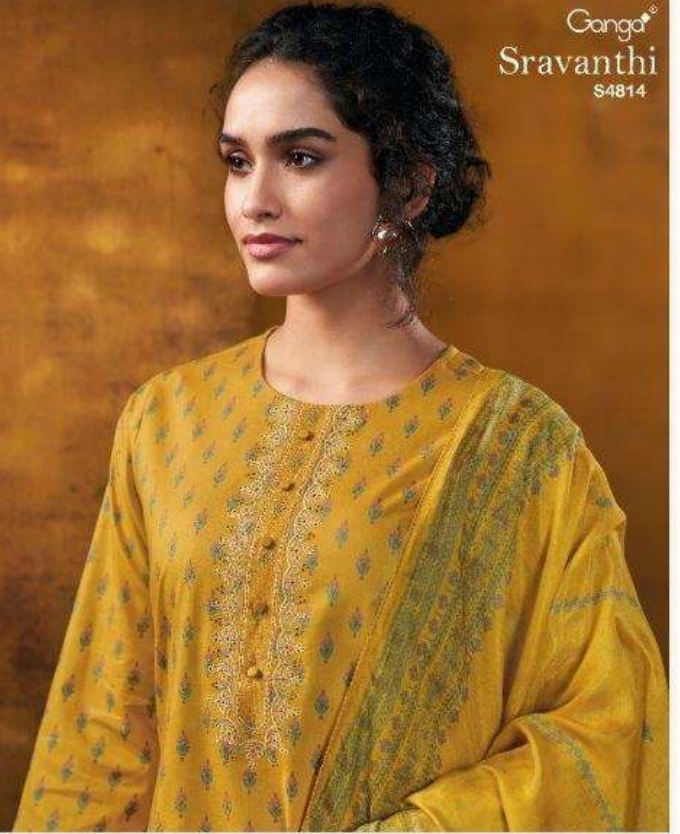


Ganga®
Srivanthi
S4814

Ganga®

Ganga®
Sravanthi
S4814

Sravanthi
S4814



DESCRIPTION

~TOP~

PREMIUM COTTON PRINTED WITH EMBROIDERY NECK,
HAND WORK, BUTTON WORK, TASSEL, CROCHET LACE
ON DAMAN & SLEEVES.

~BOTTOM~

PREMIUM COTTON SOLID COLOR.

~DUPATTA~

PREMIUM PURE BEMBERG SILK LAWN PRINTED WITH
CROCHET LACE BORDER.

WHOLESALE PRICE
1705/- EACH+GST(EXTRA)

HSN CODE- 520851

MOQ : 64 PCS

TOTAL SUITS-04

Ganga[®]

S4814-A





Ganga[®]
Srivanthi
S4814

Ganga[®]

S4814-C



Ganga[®]

S4814-B



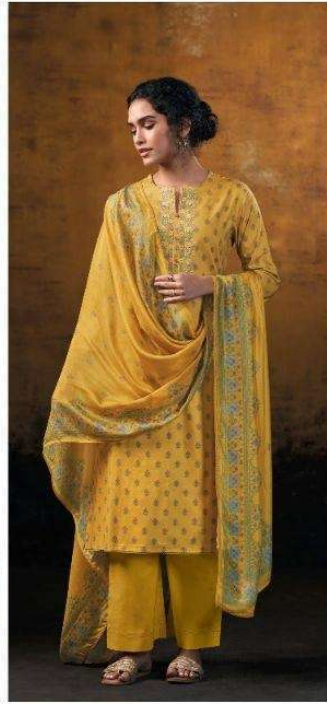
Ganga[®]

S4814-D

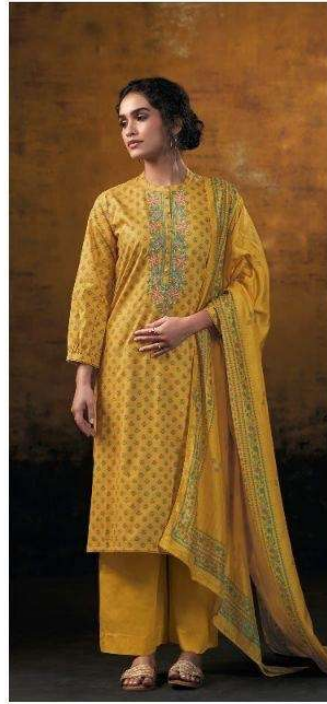




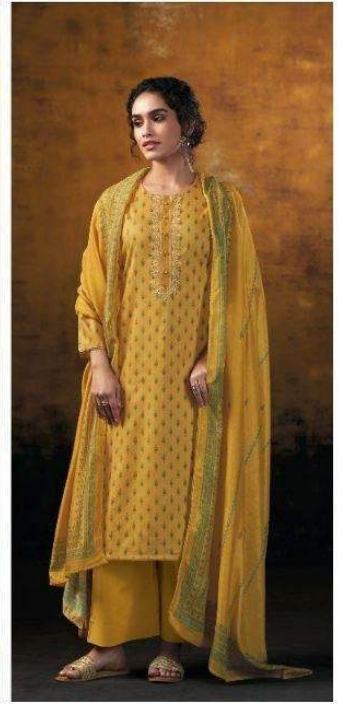
S4814-A



S4814-B



S4814-C



S4814-D

Ganga®
Sravanthi
S4814- A/B/C/D