

Heer

BY KIMORA

ROSALINE





Heer

BY KIMORA

ROSALINE

KURTA

PURE MUSLIN DIGITAL PRINT WITH RESHAM EMBROIDERY BORDER ALONG THE HEMLINE AND SLEEVES, ADORNED WITH BEAD, PEARL AND CUTDANA APPLIQUE PATCHES ON PRINT AND HANDCRAFTED EMBROIDERED BUTTONS ON THE FRONT.

DUPATTA

PURE CHINON DIGITAL PRINT WITH SCALLOPED RESHAM EMBROIDERY BORDER.

PANTS

PURE MUSLIN.



Heer

BY KIMORA

ROSALINE

KURTA

PURE MUSLIN DIGITAL PRINT WITH RESHAM EMBROIDERY BORDER ALONG THE HEMLINE AND SLEEVES; ADORNED WITH BEAD, PEARL AND CUTDANA APPLIQUÉ PATCHES ON PRINT AND HANDCRAFTED EMBROIDERED BUTTONS ON THE FRONT.

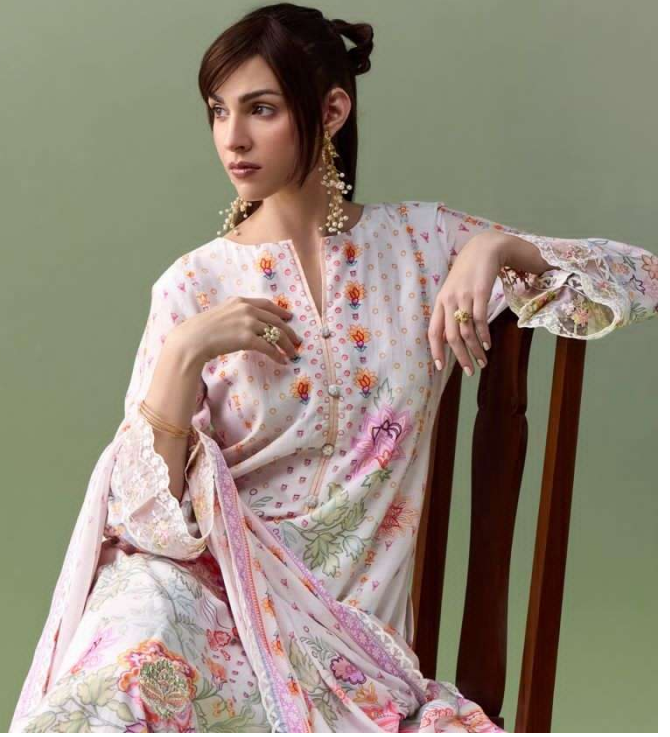
DUPATTA

PURE CHINON DIGITAL PRINT WITH SCALLOPED RESHAM EMBROIDERY BORDER.

PANTS

PURE MUSLIN.

kimora



Heer~Rosaline~Vol-255		
SR.NO.	DESIGN NO	RATE
1	D.NO.H-0111	2290.00
2	D.NO.H-0112	2290.00
3	D.NO.H-0113	2290.00
4	D.NO.H-0114	2290.00
5	D.NO.H-0115	2290.00
6	D.NO.H-0116	2290.00
TOTAL :-		13740.00



H-0111



H-0112



H-0113



H-0114



H-0115



H-0116

Heer

BY KIMORA

ROSALINE





SHE CARRIES FLOWERS, BUT SHE BLOOMS EVEN MORE.





The summer breeze, light and breezy and soft as petals,
carries a perfect harmony with the
flourishing colors behind, creating a sense of calm beauty.





In a softly painted garden of green and blossoming florals, she captures these flowers with quiet grace, turning every movement into a study of lightness, beauty, and effortless elegance.





HEER

BY KIMORA
H-0115

HEER
BY KIMORA



Like a gentle evening breeze, the dress drapes effortlessly, reflecting the quiet beauty of nature and the freedom of summer days.

BREEZE BEAUTY





Wrapped in soft hues and floral arrangements, she carries the spirit of romance in a dress that feels as delicate and graceful as the breeze around her.







Heer
BY KIMBRA

GARDEN FLOW

Against a serene forest backdrop, the dress seems like a whisper of a tale.
Blending nature's softness with timeless beauty - there.