



Amrapali





A Brand by ETHNICPLUS PVT LTD

Email : sales@ethnicplus.in Contact: + 91 96246 65566

Plot No 41, First Floor, Navjivan Society, Near Unique Hospital,

Near Sosyo Circle, Khatodara Surat 395002



Amrapali

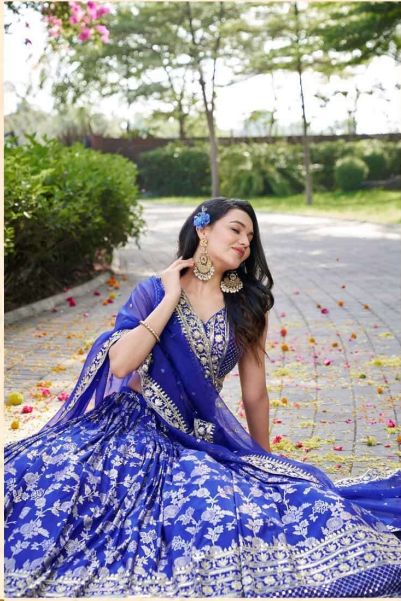




Zeel Clothing
inspire create
E.V.M.E

D.NO
7100
YELLOW

Zeel Clothing
INDIAN CLOTHING



D.NO
7100
ROYAL BLUE





D.NO
7100
GREEN



Zeel clothing
inspire create



D.NO
7100
DOVE BLUE



D.NO
7100
WINE





Zeel Clothing
ESTD 2015

DND
7199
LAVENDER







Red Clothing
EXCLUSIVE

D.NO
7190
6ANI



DND
T199
PEACH



Level Clothing
plus to create



Amrapali

| SRU | MAIN COLOR | BLOUSE FABRICS | LEHANGA FABRICS | DUPATTA FABRICS | BLOUSE SIZE (UNSTITCH) | WORK | PRICE (EXCLUDING (12%)GSTAND SHIPPING) |
|-----------------|------------|--------------------|--------------------|-----------------|-------------------------|-------------------------------|--|
| 7100-BLACK | BLACK | Dola Silk jacquard | Dola Silk jacquard | Organza | SIZE UP TO 44 (0.80mtr) | SEQUINS ZARI EMBROIDERED WORK | 2250/- (FLAT) |
| 7100-DOVE BLUE | DOVE BLUE | Dola Silk jacquard | Dola Silk jacquard | Organza | SIZE UP TO 44 (0.80mtr) | SEQUINS ZARI EMBROIDERED WORK | 2250/- (FLAT) |
| 7100-GREEN | GREEN | Dola Silk jacquard | Dola Silk jacquard | Organza | SIZE UP TO 44 (0.80mtr) | SEQUINS ZARI EMBROIDERED WORK | 2250/- (FLAT) |
| 7100-LAVENDER | LAVENDER | Dola Silk jacquard | Dola Silk jacquard | Organza | SIZE UP TO 44 (0.80mtr) | SEQUINS ZARI EMBROIDERED WORK | 2250/- (FLAT) |
| 7100-MARRON | MARRON | Dola Silk jacquard | Dola Silk jacquard | Organza | SIZE UP TO 44 (0.80mtr) | ZARI,SEQUINS EMBROIDERED WORK | 2250/- (FLAT) |
| 7100-PEACH | PEACH | Dola Silk jacquard | Dola Silk jacquard | Organza | SIZE UP TO 44 (0.80mtr) | SEQUINS ZARI EMBROIDERED WORK | 2250/- (FLAT) |
| 7100-PINK | PINK | Dola Silk jacquard | Dola Silk jacquard | Organza | SIZE UP TO 44 (0.80mtr) | SEQUINS ZARI EMBROIDERED WORK | 2250/- (FLAT) |
| 7100-Rama Green | Rama Green | Dola Silk jacquard | Dola Silk jacquard | Organza | SIZE UP TO 44 (0.80mtr) | SEQUINS ZARI EMBROIDERED WORK | 2250/- (FLAT) |
| 7100-Rani Pink | Rani Pink | Dola Silk jacquard | Dola Silk jacquard | Organza | SIZE UP TO 44 (0.80mtr) | ZARI,SEQUINS EMBROIDERED WORK | 2250/- (FLAT) |
| 7100-Royal Blue | Royal Blue | Dola Silk jacquard | Dola Silk jacquard | Organza | SIZE UP TO 44 (0.80mtr) | SEQUINS ZARI EMBROIDERED WORK | 2250/- (FLAT) |
| 7100-Wine | Wine | Dola Silk jacquard | Dola Silk jacquard | Organza | SIZE UP TO 44 (0.80mtr) | SEQUINS ZARI EMBROIDERED WORK | 2250/- (FLAT) |
| 7100-Yellow | Yellow | Dola Silk jacquard | Dola Silk jacquard | Organza | SIZE UP TO 44 (0.80mtr) | SEQUINS ZARI EMBROIDERED WORK | 2250/- (FLAT) |

TOTAL DESIGNS :12pcs

TOTAL AMOUNT : RS 27000/-

AVERAGE RATE : RS 2250/-

ALL RATES ARE FLAT NO DISCOUNT AND EXCLUDING OF GST (12%) AND SHIPPING



7100-YELLOW



7100-MARRON



7100-ROYAL BLUE



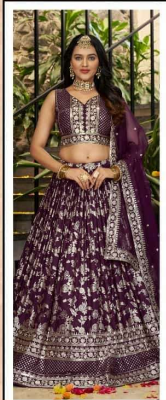
7100-GREEN



7100-BLACK



7100-DOVE BLUE



7100-WINE



7100-PINK



7100-LAVENDER



7100-PEACH



7100-RAMA GREEN



7100-RANI

Zee clothing
inspired create
ESTD 2014



Amrapali