

EXIT

SAGA vol.4

# SAGA

VOL.4

*Sampann* FIX

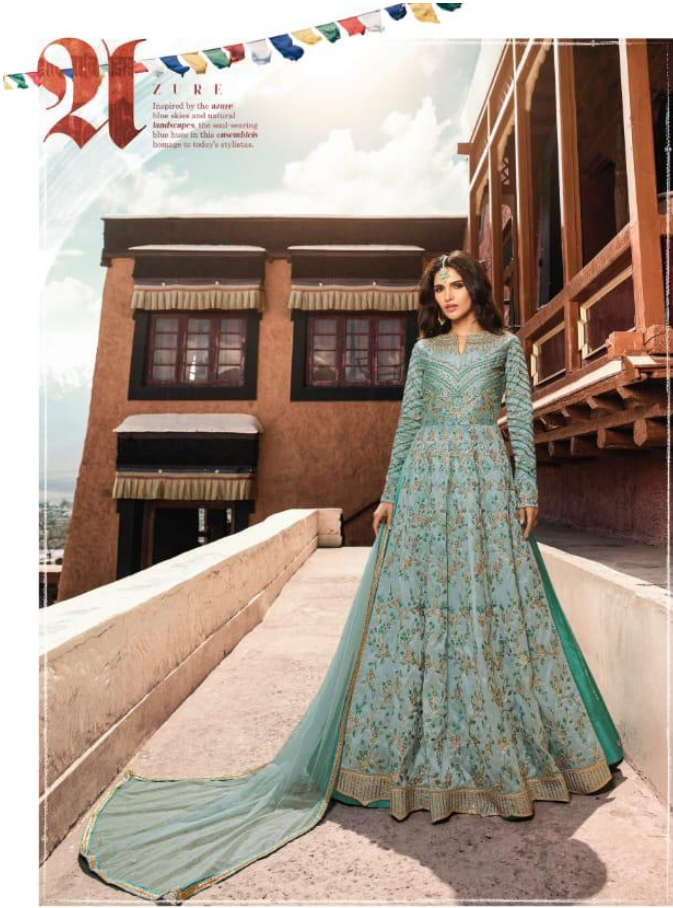


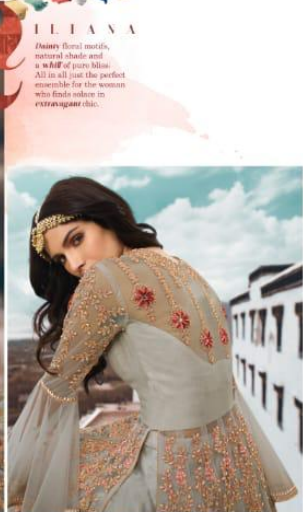
EISHA

The pastel wine palette gently imitates the subtle summer, while the intricately woven embroidery brings to life a glory and technical mastery of the miniature paintings.

5405







HEERANA

Delicate floral motifs, natural shade and a wealth of pure bliss. All in all just the perfect ensemble for the woman who finds solace in extravagant chic.



Sangam

5402



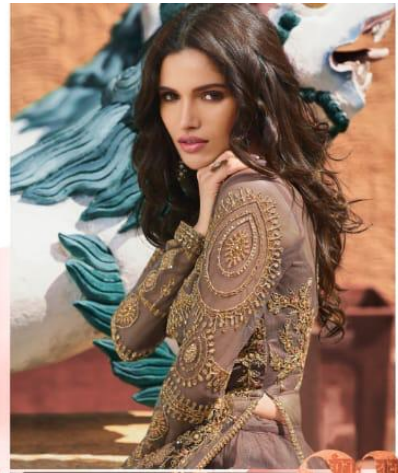
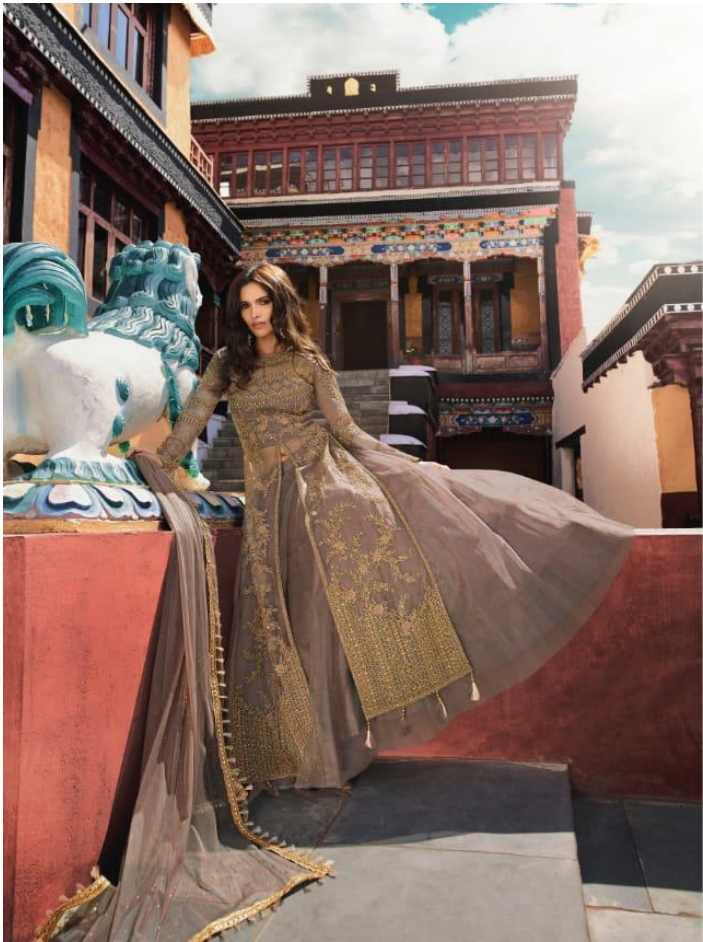


Sangam™

What makes you unique is how you see life differently.  
Celebrate each moment with full of love and life.

5405



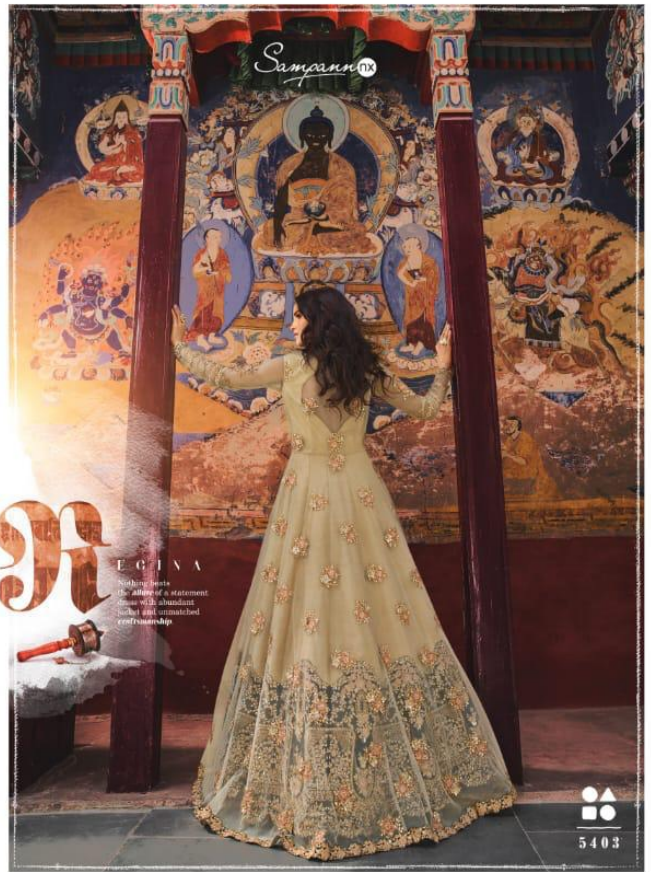


Sampann <sup>TM</sup>

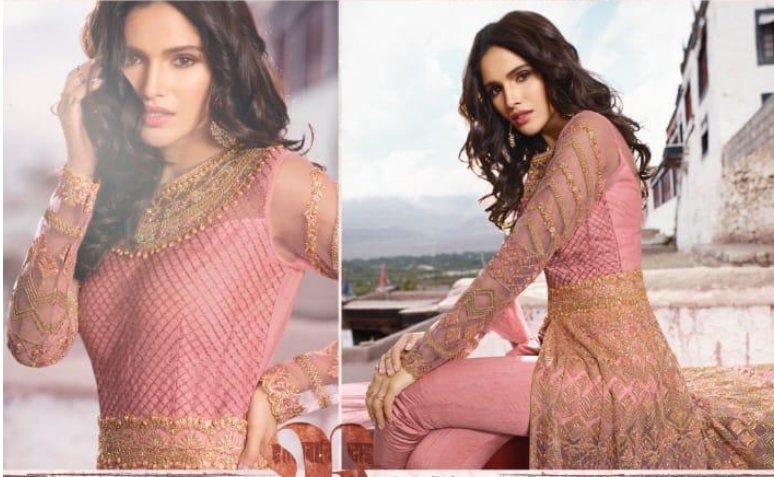


**USSET**  
Sensual and dreamy,  
this ensemble is perfect for  
evening soirees, under  
the shiny lighting sky.

5408



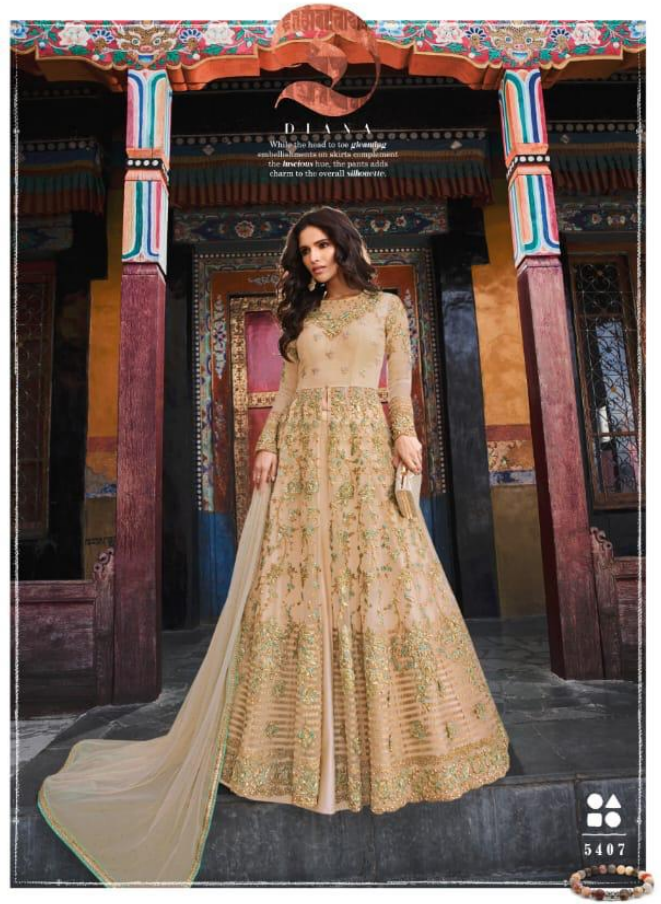
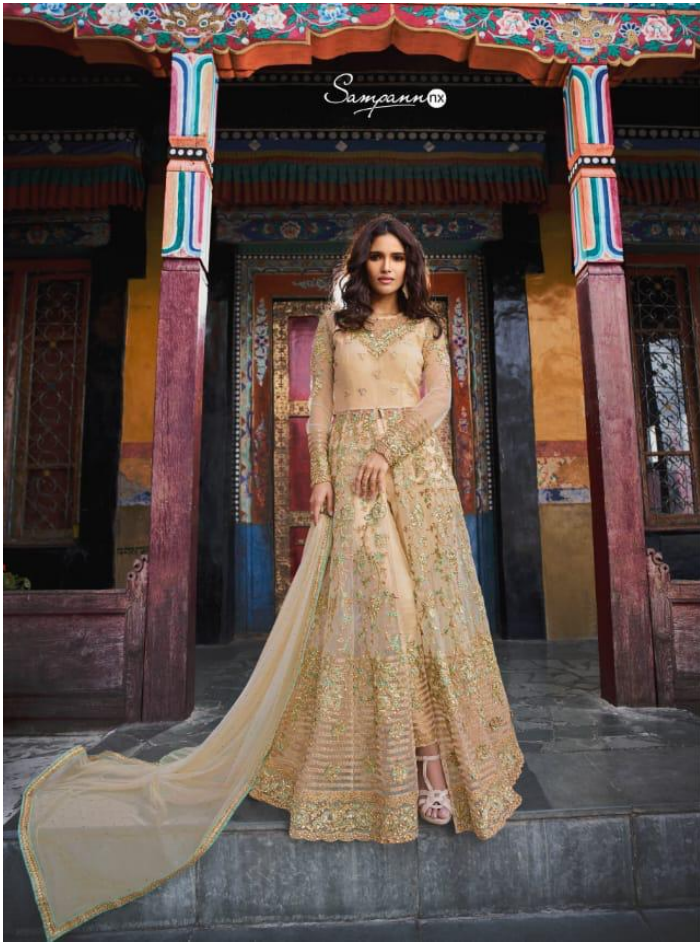




**O S E L**

This pink ensemble  
tells the tale of  
luxury colours in  
contrast with the  
royal subcontinent.  
Artificially created  
intricate embroidery  
makes it visually  
sumptuous.







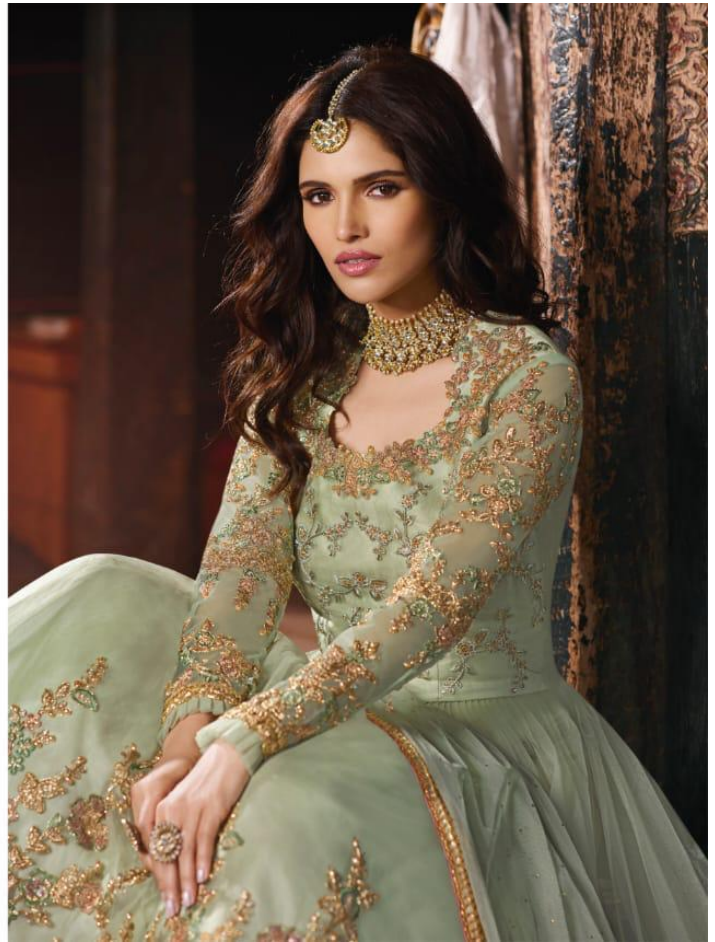
Sampurne

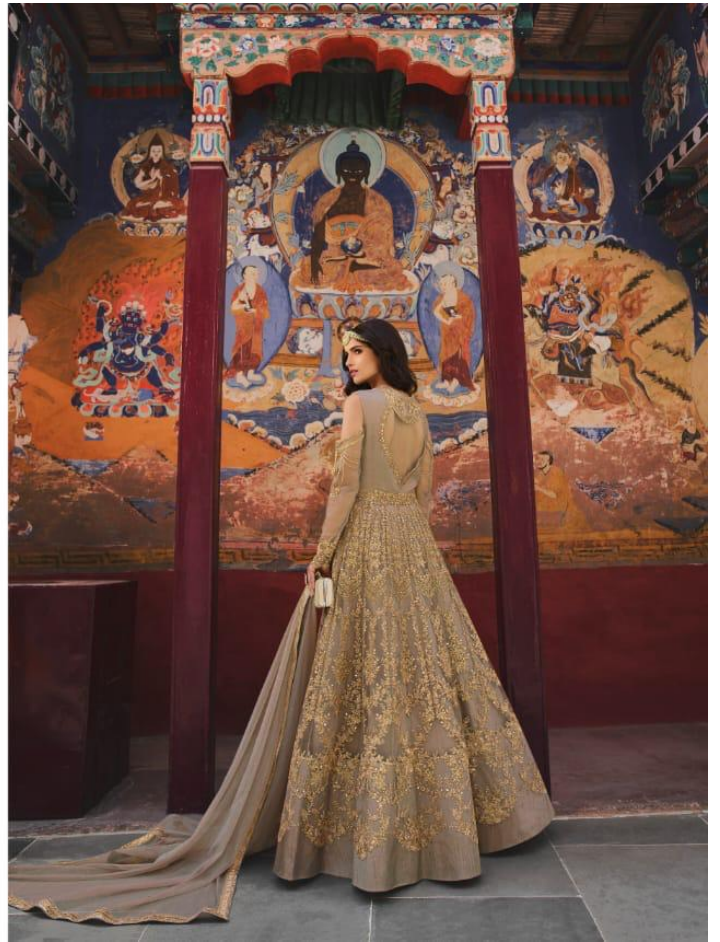


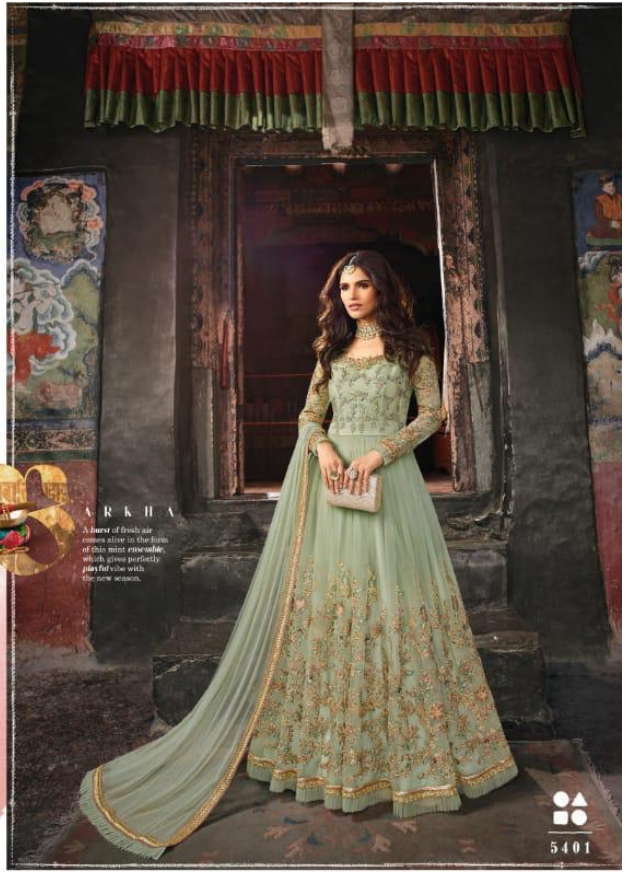
ARKHA

A burst of fresh air comes alive in the form of this mini ensemble, which gives perfectly playful vibes with the new season.

5401







5401



5402



5403



5404



5405



5406



5407



5408



## SAGA

D.NO	DETAILS	PRICE
5401	FEATURING THIS AESTHETIC PASTEL GREEN PARTY WEAR GOWN IN ROUND NET WITH SATIN INNER. EMBROIDERY WORK IS COMPLETED WITH CODING , THREAD ,BADLA,JARI , SPARKLE SEQUINS & STONE EMBELLISHMENT. IT IS PAIRED WITH SOFT NET DUPATTA WITH HEAVILY ENHANCED WITH STONE EMBELLISHMENT & SANTOON INNER.	2715/-
5402	AMP UP YOUR ETHNIC LOOK WITH THIS BEAUTIFUL LIGHT GREY PARTY WEAR ANARKALI STYLE SUIT. THIS SET FEATURES TOP NET EMBROIDERED WITH CODING ,THREAD, JARI,BADLA, SPARKLE SEQUINS & STONE EMBELLISHMENT. IT IS PAIRED WITH BANGALORI (LEHenga & PANT).PANT IS ENHANCED BY BEAUTIFUL EMBROIDERY WITH SOFT ROUNT NET DUPATTA WITH HEAVILY ENHANCED BY STONE WORK MAKES YOUR DRESS EXQUISITE.	3595/-
5403	FEATURING THIS ALLURING BEIGE ANARKALI STYLE SUIT IN SILK BASE EMBROIDERED WITH THREAD, JARI, BADLA, SEQUINS AND THIS BEAUTIFUL ATTIRE HAS NET JACKET EMBROIDERED WITH FLORAL BUNCHES IN THREAD,JARI, BADLA,SEUINS & STONE EMBELLISHMENTS IT IS PAIRED WITH SOFT NET DUPATTA WHICH IS HEAVILY ENHANCED WITH STONE EMBELLISHMENT & SANTOON BOTTOM.	3375/-
5404	THIS SET FEATURES A GRACEFUL SEA BLUE ANARKALI IN SILK BASE WITH CHAIN STITCH EMBROIDERY IN THREAD , CODING, BADLA & STONE EMBELLISHMENTS. IT IS PAIRED WITH BANGLORI SILK LEHenga & SOFT NET DUPATTA WITH HEAVILY ENHANCED WITH STONE WORK.	3315/-
5405	FEATURING THIS ATTRACTIVE BEIGE PARTY WEAR ANARKLI IN ROUND NET . EMBROIDERY WORK IS COMPLETED WITH JARI , BADLA, CODING, SEQUINS & STONE WORK. BANGALORI SILK FABRIC IS ATTACHED IN THE HEMLINE OF ANARKALI. BEAUTIFUL TASSELS IS BEEN ADDED ON THE SLEEVES. IT IS PAIRED WITH SOFT NET DUPATTA WHICH IS HEAVILY ENHANCED WITH STONE EMBELLISHMENTS & SANTOON BOTTOM.	3355/-
5406	THIS SET FEATURES A GRACEFUL PINK PARTY WEAR ANARKALI STYLE SUIT . EMBROIDERED WITH THREAD, CODING,JARI, BADLA, SEQUINS & STONE WORK. IT IS PAIRED WITH BANGLORI ( LEHenga & PANT). PANT IS ENHANCED BY BEAUTIFUL EMBROIDERED BORDER & SOFT ROUND NET DUPATTA WHICH IS HEAVILY ENHANCED WITH STONE EMBELLISHMENT.	3585/-
5407	THIS SET FEATURES AN AMAZING PEACH PARTY ANARKALI SUIT . EMBROIDERED WITH THREAD, BADLA, CODING, JARI, SEQUINS & STONE EMBELLISHMENT . IT IS PAIRED WITH BANGLORI ( LEHenga & PANT). PANT IS ENHANCED BY BEAUTIFUL EMBROIDERY & SOFT NET DUPATTA WHICH IS HEAVILY ENHANCED WITH STONE EMBELLISHMENT.	3495/-
5408	THIS SET FEATURES AN EXQUISITE BROWN PARTY WEAR JACKET STYLE SUIT.EMBROIDERED WITH THREAD, CODING,BADLA, JARI, SEQUINS & STONE WORK. IT IS PAIRED WITH NET SKIRT & SOFT NET DUPATTA WHICH IS ENHANCED WITH STONE EMBELLISHMENT . BEAUTIFUL TASSELS IS BEEN ADDED AT THE HEMLINE OF JACKET.	2545/-
<b>AVERAGE PRICE PER PCS = 3248/-</b>		<b>25980/-</b>
<b>GST CHARGES EXTRA</b>		