



#### WASHING INSTRUCTIONS

DO NOT USE ANY TYPE OF BLEACH OR STAIN REMOVING CHEMICALS  
 BEFORE CUTTING / STITCHING, FABRIC SHOULD BE SOAKED IN WATER  
 ( ALL COMPONENTS SEPARATELY ) FOR 15 MINUTES  
 DO NOT KEEP WET FABRIC IN TWISTED FORM IN ORDER TO AVOID COPY MARKS !  
 WASH COLOURED AND WHITE FABRICS SEPARATELY  
 IRON CLOTHES AT MODERATE TEMPERATURE | DO NOT DRY FABRIC IN DIRECT SUNLIGHT  
 ( EXTRA LACES, HANGINGS AND ACCESSORIES ARE NOT INCLUDED )

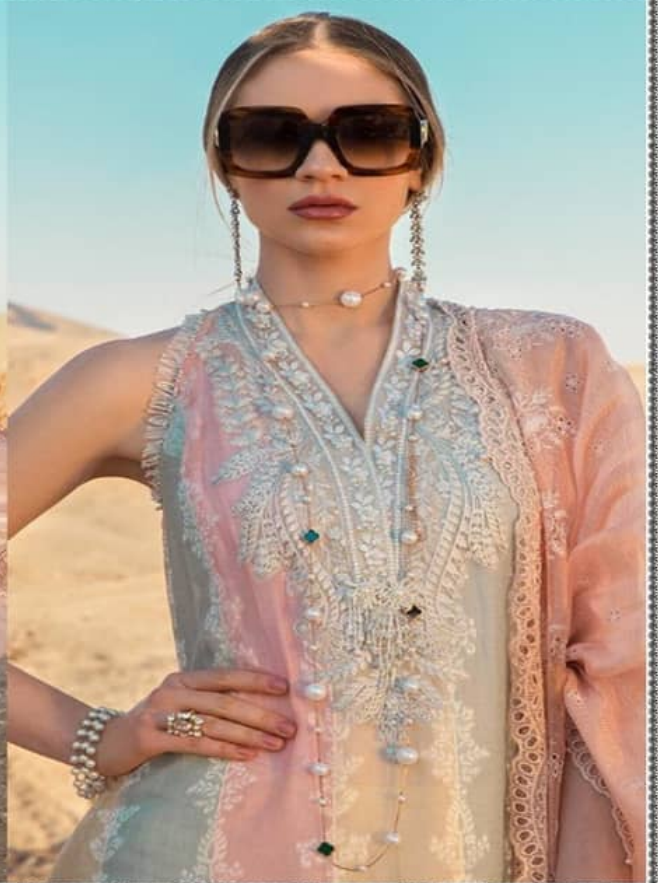
*Maria* b.vol-1

D.NO.2107

#### FABRIC DETAIL

TOP-PURE COTTON EMBROIDERED  
 CHIKKAN WORK  
 BOTTOM-PURE COTTON PRINTED  
 DUPATTA-CHIFFON PRINTED

**Fepic®**



**WASHING INSTRUCTIONS**

DO NOT USE ANY TYPE OF BLEACH OR STAIN REMOVING CHEMICALS  
BEFORE CUTTING / STITCHING, FABRIC SHOULD BE SOAKED IN WATER  
( ALL COMPONENTS SEPARATELY ) FOR 15 MINUTES  
DO NOT KEEP WET FABRIC IN TWISTED FORM IN ORDER TO AVOID COPY MARKS !  
WASH COLOURED AND WHITE FABRICS SEPARATELY  
IRON CLOTHES AT MODERATE TEMPERATURE ! DO NOT DRY FABRIC IN DIRECT SUNLIGHT  
( EXTRA LACES, HANGINGS AND ACCESSORIES ARE NOT INCLUDED )

*Maria* b.vol-1

D.NO.2108





D.NO.2106



D.NO.2107



D.NO.2108



**Fepic®**  
**ROSEMEEN**  
*Maria* b.vol-1

Instagram: @Fepic

Facebook: Fb.com/Fepic11



D.NO.2106



D.NO.2107



D.NO.2108

| D.NO. | TOP   | BOTTOM            | DUPATTA         | RATE         |
|-------|---|-------------------|-----------------|--------------|
| 2106  | PURE COTTON<br>FRONT SHIFLY EMBROIDERED BACK PRINTED COTTON<br>WITH EMBROIDERED BUNCHES | SEMI LAWN PRINTED | CHIFFON PRINTED | 839          |
| 2107  | PURE COTTON<br>FRONT SHIFLY EMBROIDERED BACK PRINTED COTTON<br>WITH EMBROIDERED BUNCHES | SEMI LAWN PRINTED | CHIFFON PRINTED | 839          |
| 2108  | PURE COTTON PRINTED WITH<br>EMBROIDERED PATCHES   | SEMI LAWN PRINTED | NET EMBROIDERED | 915          |
|       |   |                   |                 | AVG RATE-865 |

**Fepic®** Maria b.vol-1

Instagram: \_Fepic

Facebook: Fb.com/Fepic11





#### WASHING INSTRUCTIONS

DO NOT USE ANY TYPE OF BLEACH OR STAIN REMOVING CHEMICALS  
BEFORE CUTTING / STITCHING. FABRIC SHOULD BE SOAKED IN WATER  
( ALL COMPONENTS SEPARATELY ) FOR 15 MINUTES  
DO NOT KEEP WET FABRIC IN TWISTED FORM IN ORDER TO AVOID COPY MARKS |  
WASH COLOURED AND WHITE FABRICS SEPARATELY  
IRON CLOTHES AT MODERATE TEMPERATURE | DO NOT DRY FABRIC IN DIRECT SUNLIGHT  
( EXTRA LACES, HANGINGS AND ACCESSORIES ARE NOT INCLUDED )

*Maria* b.vol-1

D.NO.2106

#### FABRIC DETAIL

TOP-PURE COTTON EMBROIDERED  
CHIKKAN WORK  
BOTTOM-PURE COTTON PRINTED  
DUPATTA-CHIFFON PRINTED



D.NO.2106



D.NO.2107



D.NO.2108

**Fepic**®

**ROSEMEEN**  
*Maria* b.vol-1

Instagram: [\\_Fepic](#) Facebook: [fb.com/Fepic11](#)





D.NO.2106



D.NO.2107



D.NO.2108

