

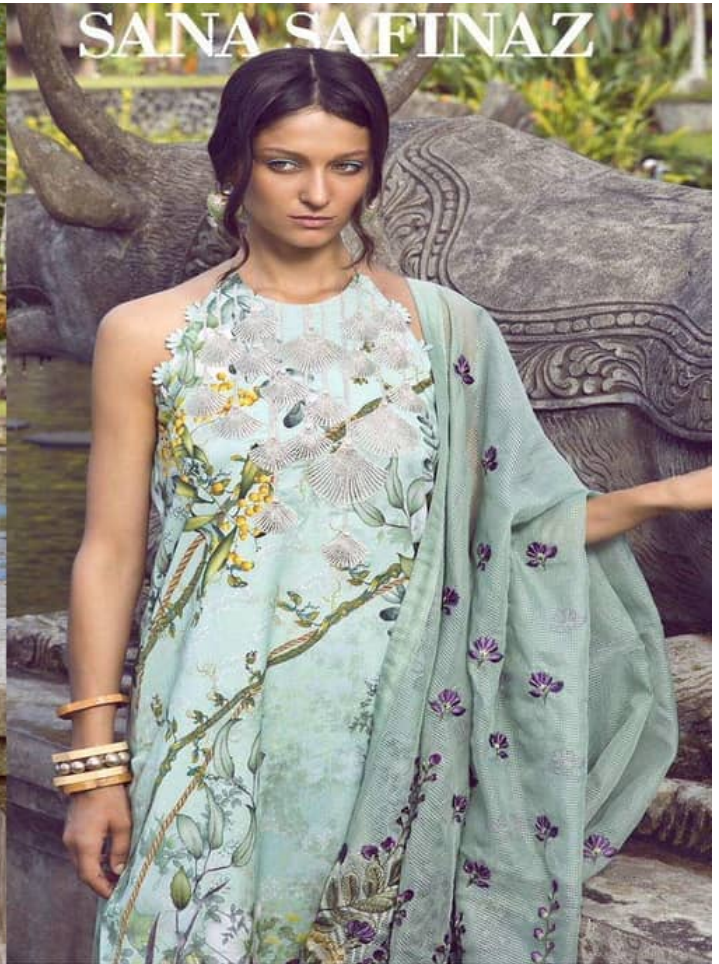


Fepic®

SANA SAFINAZ

WildFLOWER

 :_Fepic  :Fb.com/Fepic11



WASHING INSTRUCTIONS

DO NOT USE ANY TYPE OF BLEACH OR STAIN REMOVING CHEMICALS
BEFORE CUTTING / STITCHING. FABRIC SHOULD BE SOAKED IN WATER
(ALL COMPONENTS SEPARATELY) FOR 15 MINUTES
DO NOT KEEP WET FABRIC IN TWISTED FROM IN ORDER TO AVOID COPY MARKS I
WASH COLOURED AND WHITE FABRICS SEPARATELY
IRON CLOTHES AT MODERATE TEMPERATURE I DO NOT DRY FABRIC IN DIRECT SUNLIGHT
(EXTRA LACES, HANGINGS AND ACCESSORIES ARE NOT INDUDED)

SANA SAFINAZ

WildFLOWER

D.NO.43009





D.NO.43009



D.NO.43010



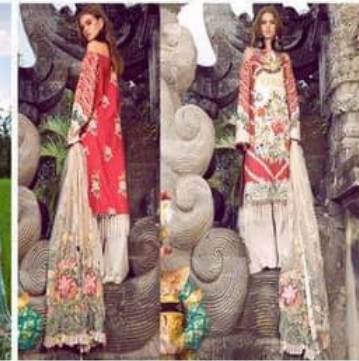
D.NO.43011



D.NO.43012



D.NO.43013




D.NO.43014




Fepic®

SANA SAFINAZ

WildFLOWER

 :_Fepic

 :Fb.com/Fepic11

SANA SAFINAZ



WASHING INSTRUCTIONS

DO NOT USE ANY TYPE OF BLEACH OR STAIN REMOVING CHEMICALS
BEFORE CUTTING / STITCHING. FABRIC SHOULD BE SOAKED IN WATER
(ALL COMPONENTS SEPARATELY) FOR 15 MINUTES
DO NOT KEEP WET FABRIC IN TWISTED FORM IN ORDER TO AVOID COPY MARKS |
WASH COLOURED AND WHITE FABRICS SEPARATELY
IRON CLOTHES AT MODERATE TEMPERATURE | DO NOT DRY FABRIC IN DIRECT SUNLIGHT
(EXTRA LACES, HANGINGS AND ACCESSORIES ARE NOT INCLUDED)

SANA SAFINAZ

WildFLOWER

D.NO.43011





WASHING INSTRUCTIONS

DO NOT USE ANY TYPE OF BLEACH OR STAIN REMOVING CHEMICALS
BEFORE CUTTING / STITCHING. FABRIC SHOULD BE SOAKED IN WATER
(ALL COMPONENTS SEPARATELY) FOR 15 MINUTES
DO NOT KEEP WET FABRIC IN TWISTED FROM IN ORDER TO AVOID COPY MARKS I
WASH COLOURED AND WHITE FABRICS SEPARATELY
IRON CLOTHES AT MODERATE TEMPERATURE I DO NOT DRY FABRIC IN DIRECT SUNLIGHT
(EXTRA LACES, HANGINGS AND ACCESSORIES ARE NOT INCLUDED)

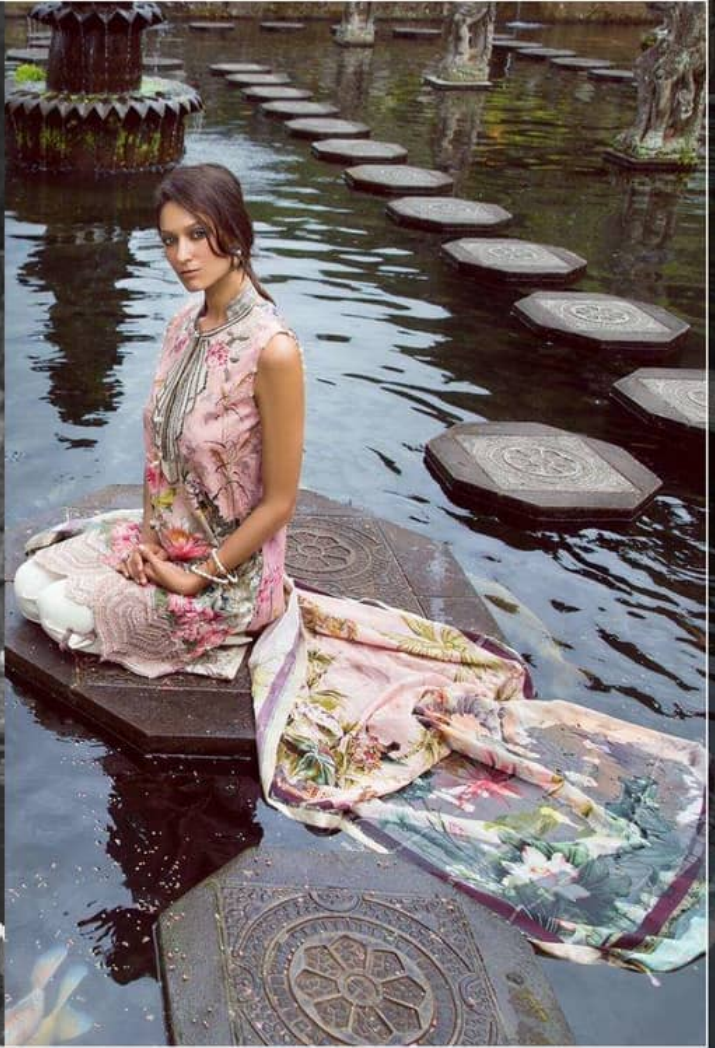
SANA SAFINAZ

WildFLOWER

D.NO.43010



Fepic®
SANA SAFINAZ
WildFLOWER
Instagram: [_Fepic](#) Facebook: [fb.com/Fepic1](#)



D.NO	TOP	BOTTOM	DUPATTA	RATE
43009	CAMBRIC COTTON DIGITALPRINT WITH EMBROIDERED PATCHES	SEMILAWN	KOTA CHAQUES HEAVY EMBRIDERED NET	1021
43010	CAMBRIC COTTON DIGITALPRINT WITH EMBROIDERED PATCHES	SEMILAWN	BUTTERFLY HEAVY EMBRIDERED NET	949
43011	CAMBRIC COTTON DIGITALPRINT WITH EMBROIDERED PATCHES	SEMILAWN	KOTA CHAQUES HEAVY EMBRIDERED NET	1021
43012	CAMBRIC COTTON DIGITALPRINT WITH EMBROIDERED PATCHES	SEMILAWN	CHIFFON PRINTED	875
43013	CAMBRIC COTTON DIGITALPRINT WITH EMBROIDERED PATCHES	SEMILAWN	CHIFFON PRINTED	875
43014	CAMBRIC COTTON DIGITALPRINT WITH EMBROIDERED PATCHES	SEMILAWN	BUTTERFLY HEAVY EMBRIDERED NET	949

AVG RATE-949

Fepic®

SANA SAFINAZ

WildFLOWER

 :_Fepic

 :Fb.com/Fepic11



WASHING INSTRUCTIONS

DO NOT USE ANY TYPE OF BLEACH OR STAIN REMOVING CHEMICALS
BEFORE CUTTING / STITCHING. FABRIC SHOULD BE SOAKED IN WATER
(ALL COMPONENTS SEPARATELY) FOR 15 MINUTES
DO NOT KEEP WET FABRIC IN TWISTED FORM IN ORDER TO AVOID COPY MARKS I
WASH COLOURED AND WHITE FABRICS SEPARATELY
IRON CLOTHES AT MODERATE TEMPERATURE I DO NOT DRY FABRIC IN DIRECT SUNLIGHT
(EXTRA LACES, HANGINGS AND ACCESSORIES ARE NOT INCLUDED)

SANA SAFINAZ

*Wild*FLOWER

D.NO.43014





WASHING INSTRUCTIONS

DO NOT USE ANY TYPE OF BLEACH OR STAIN REMOVING CHEMICALS
BEFORE CUTTING / STITCHING. FABRIC SHOULD BE SOAKED IN WATER
(ALL COMPONENTS SEPARATELY) FOR 15 MINUTES
DO NOT KEEP WET FABRIC IN TWISTED FROM IN ORDER TO AVOID COPY MARKS I
WASH COLOURED AND WHITE FABRICS SEPARATELY
IRON CLOTHES AT MODERATE TEMPERATURE I DO NOT DRY FABRIC IN DIRECT SUNLIGHT
(EXTRA LACES, HANGINGS AND ACCESSORIES ARE NOT INCLUDED)

SANA SAFINAZ

WildFLOWER

D.NO.43013

