

A woman with long dark hair is wearing a peach-colored kurta with intricate floral embroidery in shades of pink, purple, and green. The kurta has a round neckline and a decorative tassel at the waist. She is standing in front of a dark wooden structure with a grid pattern. The lighting is dramatic, highlighting the texture of the fabric and the details of the embroidery.

Riya
DESIGNER

Glory
vol-3





"Anyone can get kurtaed up and glamorous, but it is how people kurts in their days off that are the most intriguing."

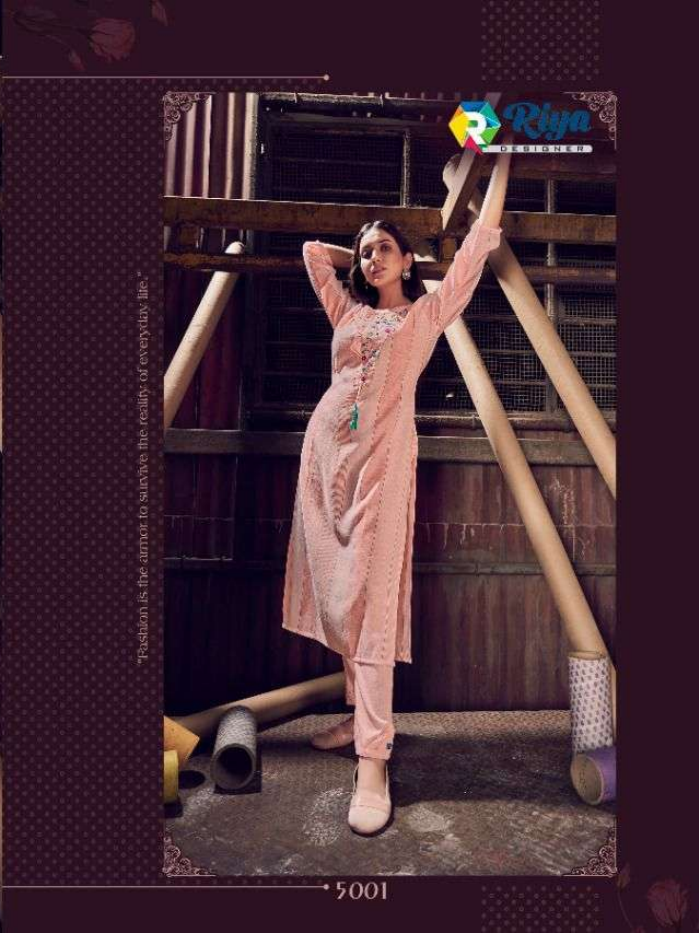
5002



"You gotta have style. It helps you get down the stairs. It helps you get up in the morning. It's a way of life. Without it, you're nobody. I'm not talking about lots of clothes."

5004





"Fashion is the armor to survive the reality of everyday life."

5001



5001

5002



5003

5004

 Rina
DESIGNER

