

A woman with dark hair styled in an updo stands in a grand, ornate hallway. She is wearing a teal-colored kurta with a long, vertical line of gold embroidery down the center and gold detailing at the cuffs. She is also wearing matching teal trousers and gold-embroidered flat shoes. The hallway features a checkered floor, white pillars with intricate carvings, and a series of arches that recede into the distance. The lighting is warm and bright, creating a sense of depth and grandeur. In the top right corner, there is a logo for 'STYLEMAX' featuring a stylized orange and yellow bird-like figure above the text.

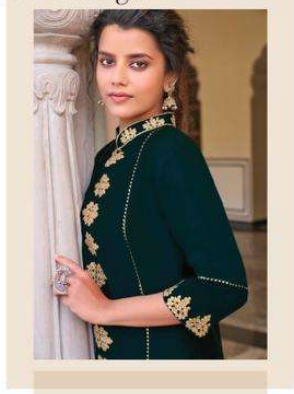
STYLEMAX



STYLEMAX™

POWER OF *dressing*

397





STYLEMAX™

MASTER *class* BEAUTY



391





TRADITION *class* ELEGANCE



392

A woman with dark hair styled in an updo stands in a grand, ornate hallway. She is wearing a teal-colored kurta with a long, vertical line of gold embroidery down the center and gold cuffs. She is also wearing teal trousers and gold jewelry, including a necklace and large earrings. The hallway features a checkered floor, white pillars with intricate carvings, and a series of arches that recede into the distance. The lighting is warm and dramatic, highlighting the architectural details and the woman's attire. In the top right corner, there is a logo for 'STYLEMAX' featuring a stylized orange and yellow bird-like figure.

STYLEMAX



STYLEMAX™



MASTER *class* BEAUTY



396



STYLEMAX



AROUND the world in STYLE

395




STYLEMAX™



IN EVERY
..... woman is a
QUEEN

394



391



392



395



396



393



394



397



STYLEMAX

AMEERA