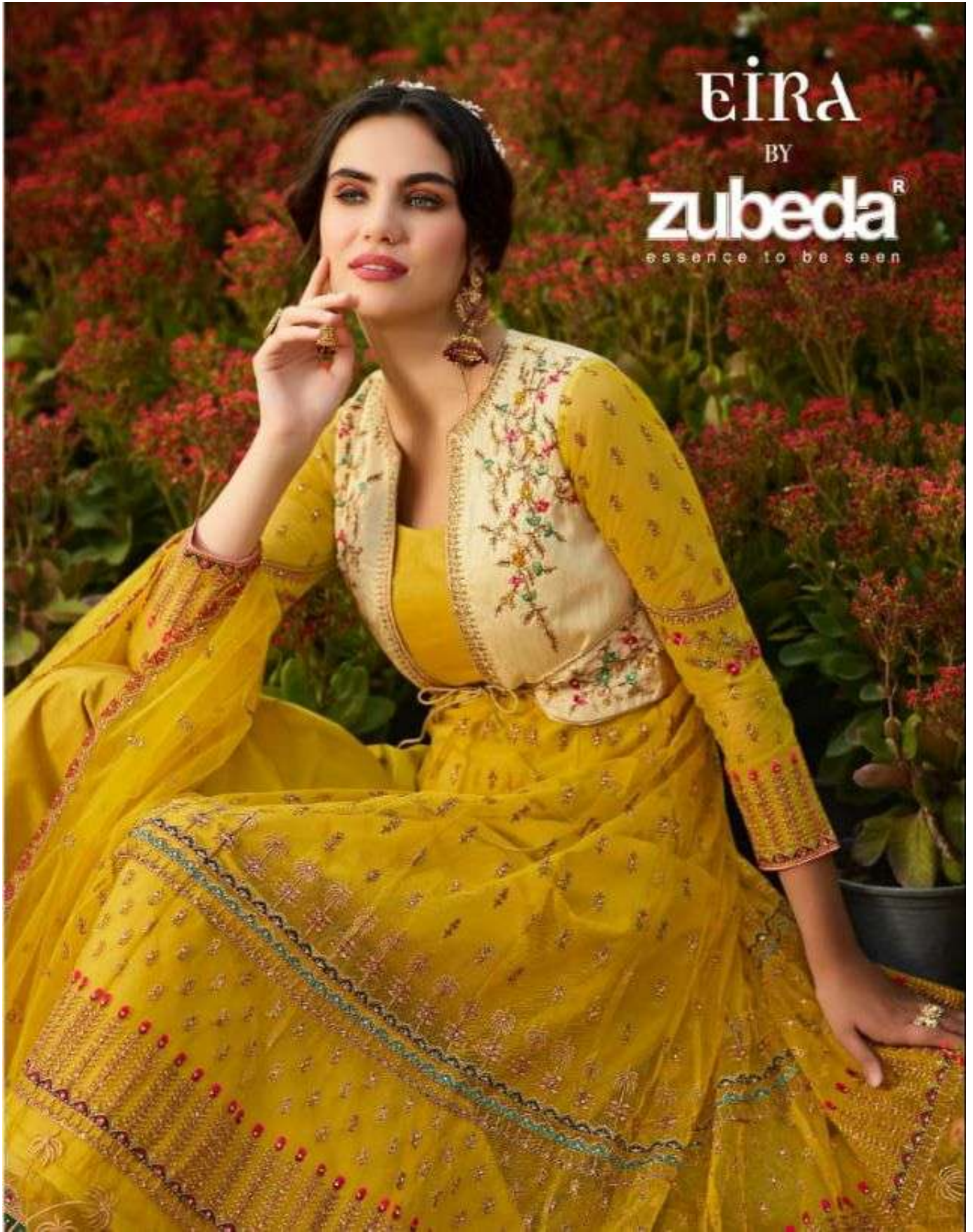


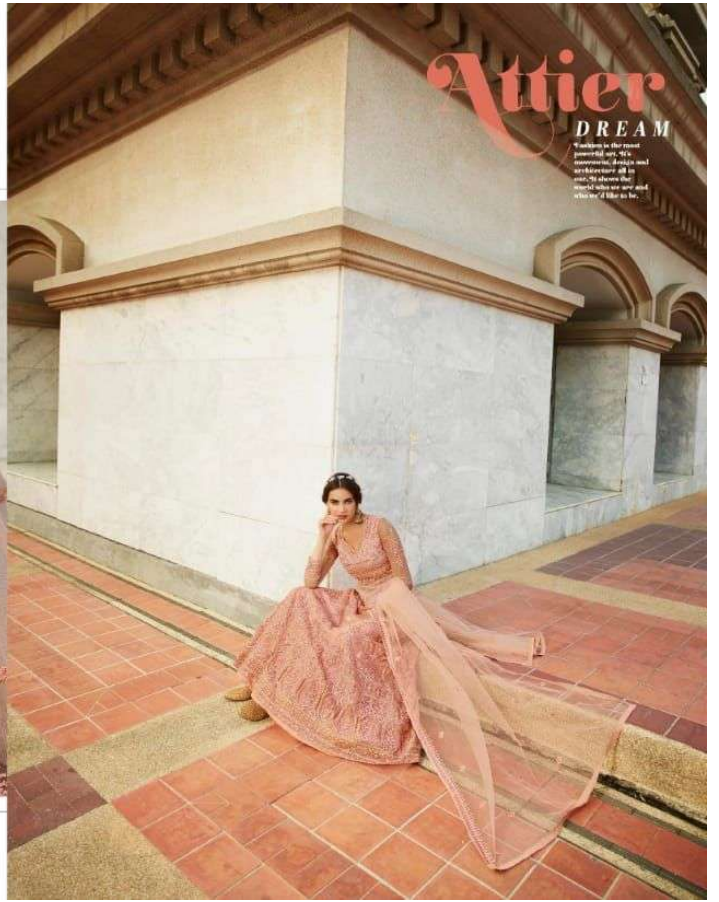
EIRA
BY
zubeda[®]
essence to be seen



zubeda
DESIGNED IN THE 1950s



• Z-603 •



Attier
DREAM

7 months in the making
inspired by the
romanticism of the
1950s, the dress is
made of silk and
lace, with a long
train and a full skirt.





zubeda
DESIGNER BY ZUBEDA
Z-603



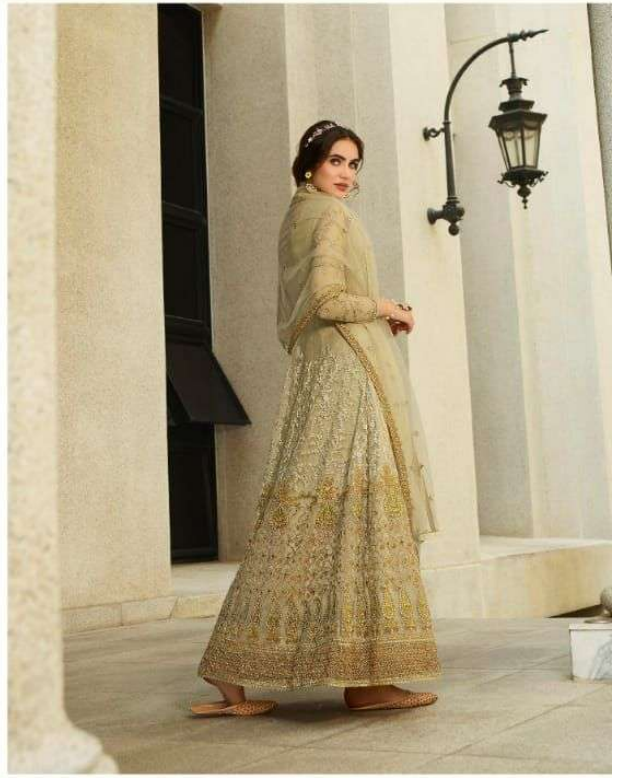
zubeda
DESIGNED BY ANNA



● Z-602 ●









● Z-601 ●



● Z-602 ●



● Z-603 ●



● Z-604 ●



EIRA
BY
zubeda[®]
essence to be seen



zubeda