

A woman with long dark hair is standing in a classical interior, leaning against a large stone column. She is wearing a long, flowing dress with a vibrant floral pattern in shades of red, orange, and green on a light background. The dress has a wide, colorful border at the hem. She is also wearing light-colored trousers and flat shoes. The background features a checkered floor, a wooden bench, and a statue holding a spear. The overall atmosphere is elegant and sophisticated.

KILORY
T r e n d s

KANIKARI
— SPRING SUMMER COLLECTION —



DESIGN NO.631



DESIGN NO.632



DESIGN NO.635



DESIGN NO.636



DESIGN NO.633



DESIGN NO.634



DESIGN NO.637



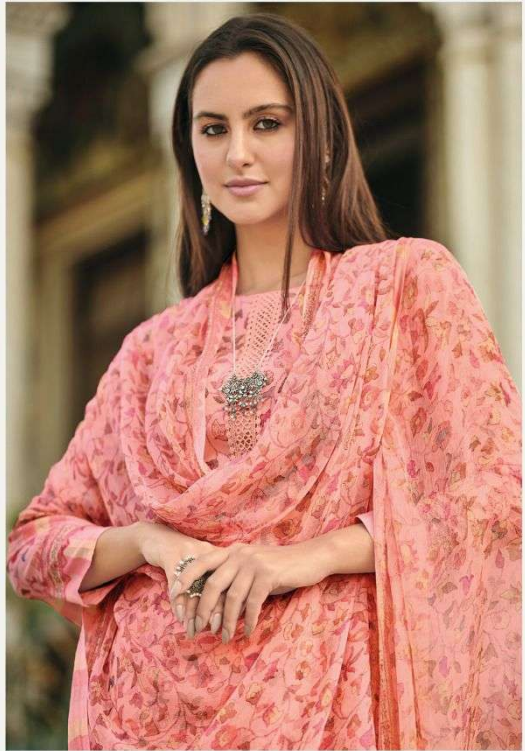
DESIGN NO.638

KANIKARI
— SPRING SUMMER COLLECTION —

KILORY
T r e n d s



DESIGN NO.638



KILORY
Trends

WE DON'T DESIGN CLOTHS, WE DESIGN DREAMS



• KILORY •
T r e n d s

VIRTUOUS AND FAIR, ROYAL AND GRACIOUS



DESIGN NO.637



DESIGN NO.636

KILORY
Trends

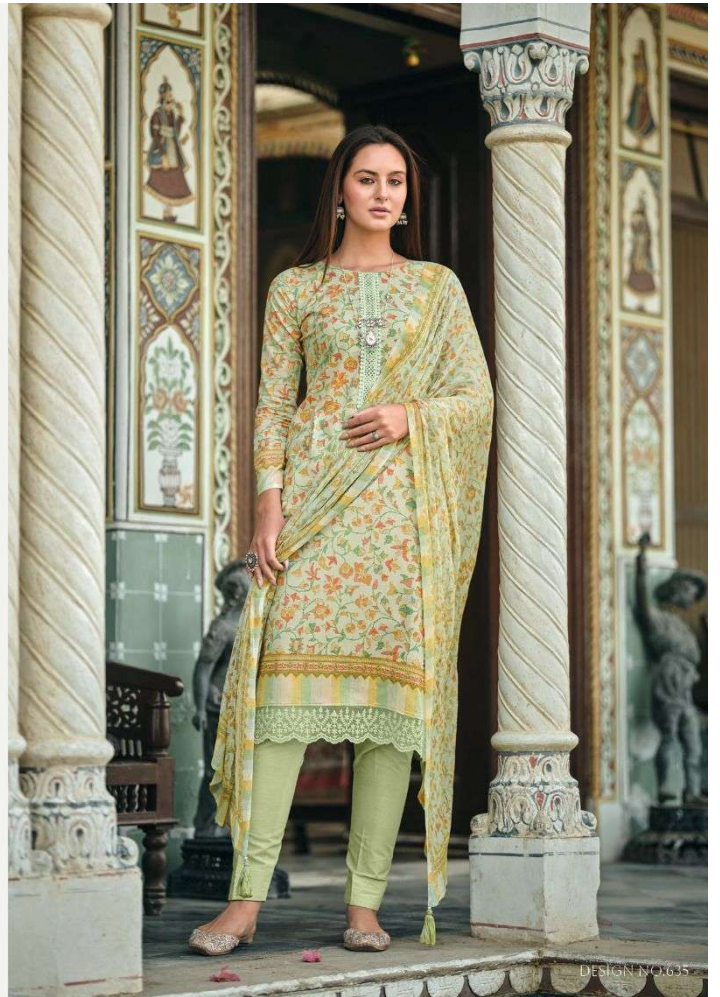


BE LOYAL TO THE ROYAL WITHIN YOU

• KILORY •
T r e n d s



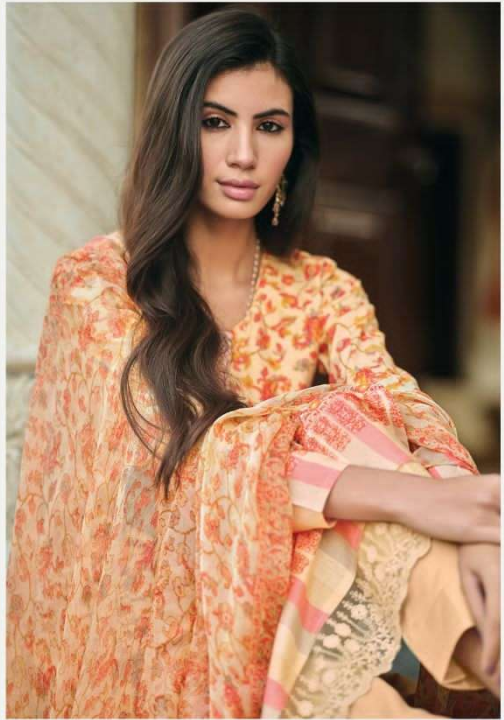
SHE IS A QUEEN, HER SOUL IS ROYALTY



DESIGN NO: 635



DESIGN NO.634



• KILORY •
Trends

TO PULL OF ANY LOOK, WEAR IT WITH CONFIDENCE





• KILORY •
Trends

WE DON'T DESIGN CLOTHS, WE DESIGN DREAMS



DESIGN NO.632