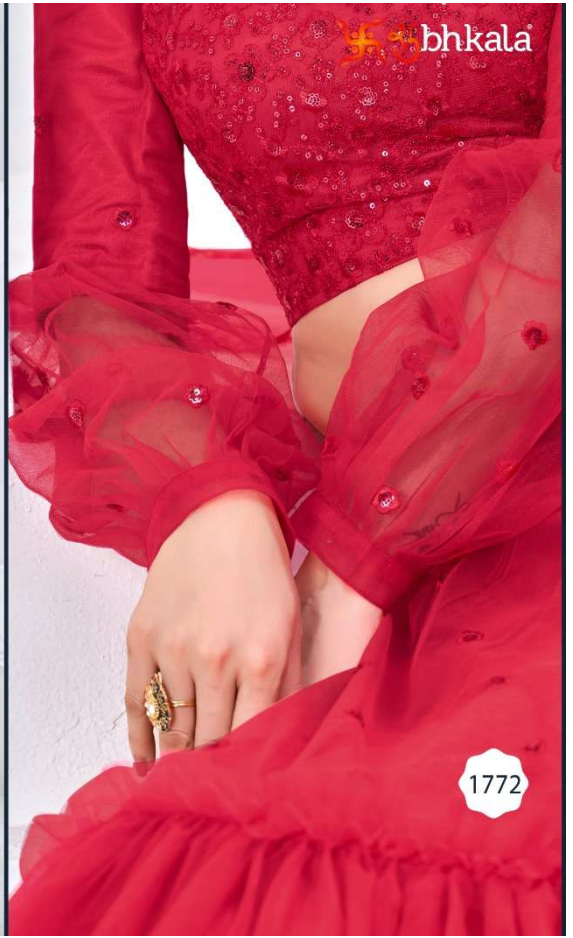




Shubhkala



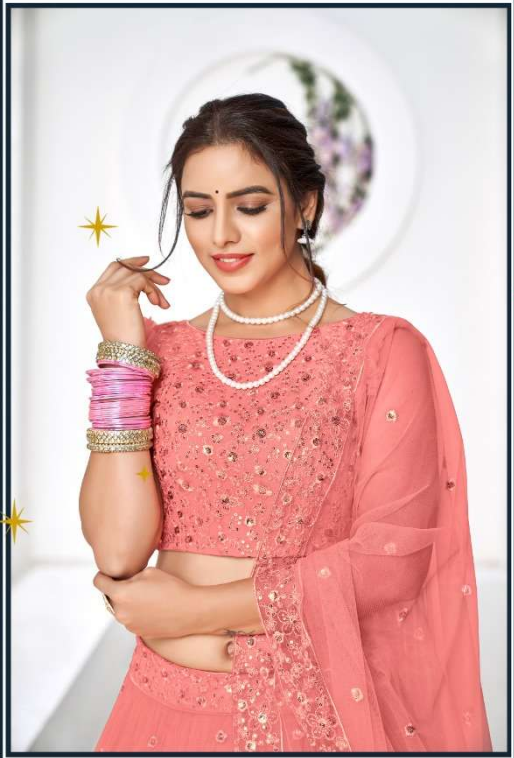




1773

शुभकला





1771

शुभकला bhkala



Design NO. (SKU)	Main Color	Leheng a Fabric	Choli Fabric	Dupatt a Fabric	Size (Semi-Stitched)	Lehenga Work	Choli Work	Dupatta Work	Choli Length MTR	Lehenga Length MTR	Dupatta Length MTR	Weight
1771	Peach	NET	NET	NET	UPTO 42 BUST AND WAIST	Thread with Sequance Embroidered	Thread with Sequance Embroidered	Thread with Sequance Embroidered	1 MTR	42 INCH	2.30 MTR	1.5 KG
1772	Rani Pink	NET	NET	NET	UPTO 42 BUST AND WAIST	Thread with Sequance Embroidered	Thread with Sequance Embroidered	Thread with Sequance Embroidered	1.5 MTR	42 INCH	2.30 MTR	1.5 KG
1773	Navy	NET	NET	NET	UPTO 42 BUST AND WAIST	Thread with Sequance Embroidered	Thread with Sequance Embroidered	Thread with Sequance Embroidered	1 MTR	42 INCH	2.30 MTR	1.5 KG
1774	Fluorescent green	NET	NET	NET	UPTO 42 BUST AND WAIST	Thread with Sequance Embroidered	Thread with Sequance Embroidered	Thread with Sequance Embroidered	1.5 MTR	42 INCH	2.30 MTR	1.5 KG
1775	Dusty Pink	NET	NET	NET	UPTO 42 BUST AND WAIST	Thread with Sequance Embroidered	Thread with Sequance Embroidered	Thread with Sequance Embroidered	1.5 MTR	42 INCH	2.30 MTR	1.5 KG

THIS BOOK / CATALOGUE / LOGO / ARE PROTECTED UNDER COPYRIGHT ACT.
 AN ILLEGAL/UNAUTHORIZED REPRINT, PUBLISHING, REPRODUCTION, DISTRIBUTION AND MODIFICATION OF ANY IMAGES, PHOTOGRAPHS AND PRODUTCS,
 TOTALLY OR IN PART, FOR ANY PURPOSE, REASON OR CAUSE IS STRICTLY PROHIBITED AND PUNISHABLE UNDER LAW.