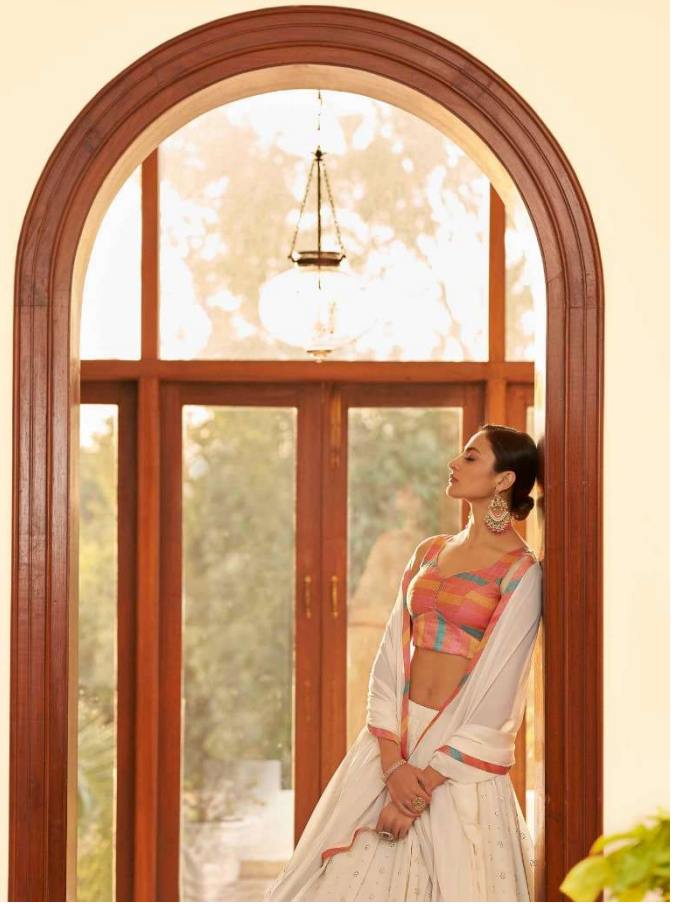


शुभकला

Girly vol-22





| Design NO. (SKU) | Main Color | Lehenga Fabric | Choli Fabric | Dupatta Fabric | Size (Semi-Stitched) | Lehenga Work | Choli Work | Dupatta Work | Choli Length MTR | Lehenga Length MTR | Dupatta Length MTR | Weight |
|------------------|----------------------|----------------|--------------|----------------|------------------------|---|---|----------------------------------|------------------|--------------------|--------------------|--------|
| 1971 | Beige, Multi Color | Georgette | Cotton | Georgette | UPTO 42 BUST AND WAIST | Embellished Mukaish Work | Multi Color Weaving Fabric | Lace On Border | 1 MTR | 42 INCH | 2.30 MTR | 2 KG |
| 1972 | Sky, Multi Color | Georgette | Georgette | Cotton | UPTO 42 BUST AND WAIST | Embellished Mukaish Work | Embellished Mukaish Work | Sequince With Shibori Print | 1.65 MTR | 42 INCH | 2.30 MTR | 2 KG |
| 1973 | Pink, Yellow, Purple | Georgette | Cotton | NET | UPTO 42 BUST AND WAIST | Embellished Mukaish Work | Multi Color Weaving Fabric | Thread With Sequance Embroidered | 1.20 MTR | 42 INCH | 2.30 MTR | 2 KG |
| 1974 | White, Orange | Art Silk | Art Silk | Silk | UPTO 42 BUST AND WAIST | Thread With Sequance Embroidered With Mirror Work | Thread With Sequance Embroidered With Mirror Work | Jacquard Weaving | 0.8 MTR | 42 INCH | 2.30 MTR | 2 KG |

THIS BOOK / CATALOGUE / LOGO / ARE PROTECTED UNDER COPYRIGHT ACT.
 AN ILLEGAL/UNAUTHORIZED REPRINT, PUBLISHING, REPRODUCTION, DISTRIBUTION AND MODIFICATION OF ANY IMAGES, PHOTOGRAPHS AND PRODUCTS,
 TOTALLY OR IN PART, FOR ANY PURPOSE, REASON OR CAUSE IS STRICTLY PROHIBITED AND PUNISHABLE UNDER LAW.

Girly vol-22

bhkala



1971



1972



1973



1974



bhkala



1973





Swasthika bhkala



1971

