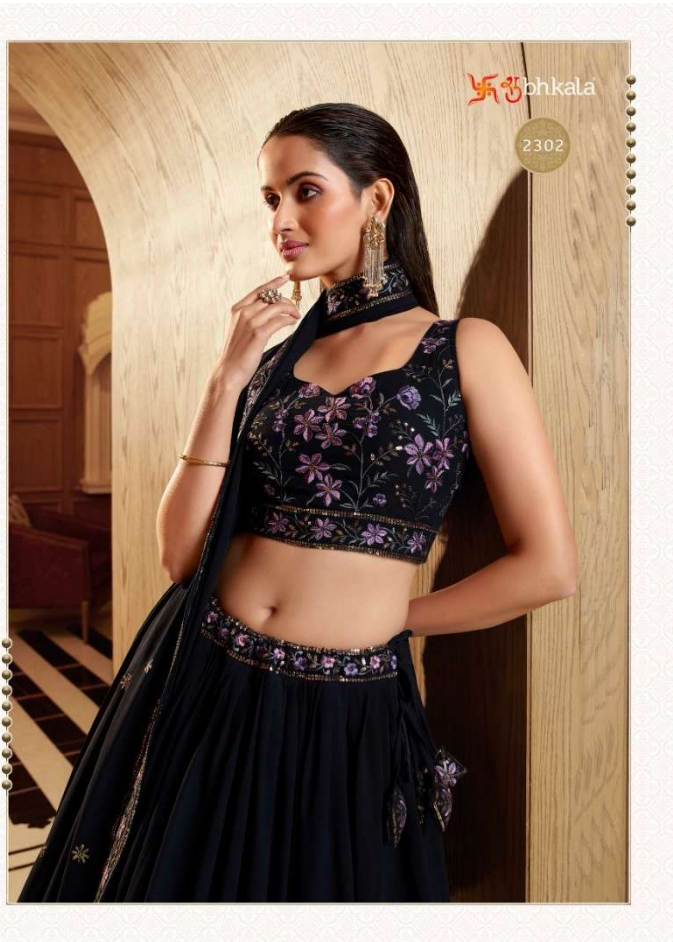


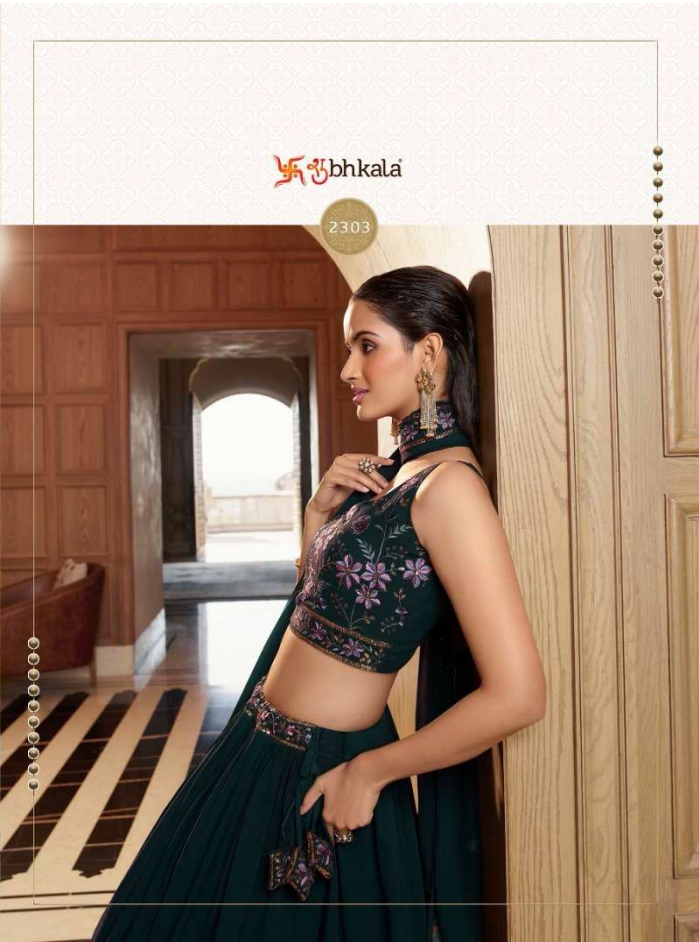


bhkala

2301

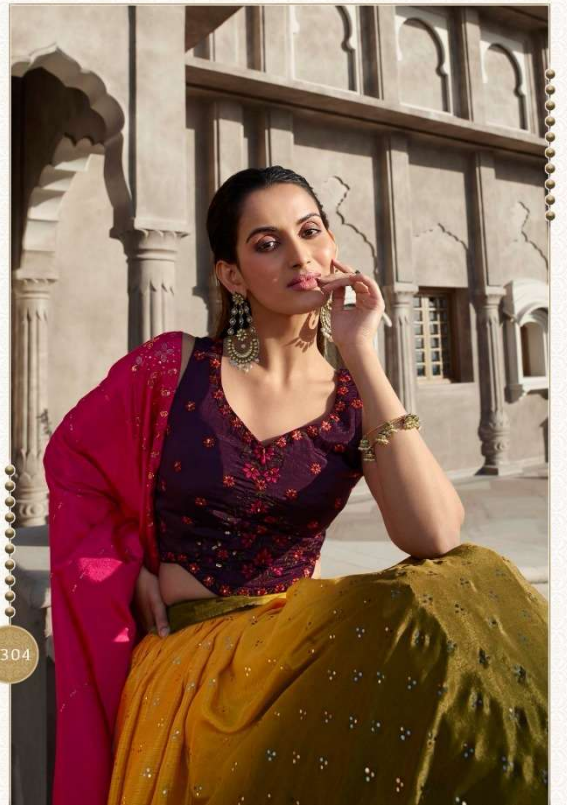








शुभकला



2304



Shikha

2305



2306

bhkala



Bridesmaid
VOL-30



2301



2302



2303

bhkala



2304



2305



2306

Bridesmaid

VOL-30

Design NO. (SKU)	Main Color	Lehenga Fabric	Choli Fabric	Dupatta Fabric	Size	Lehenga Work (Semi Stitched)	Choli Work (UN-Stitched)	Dupatta Work	Choli Length	Lehenga Length	Dupatta Length
2301	Pink	Georgette	Georgette	Georgette	42 BUST AND WAIST	Print With Sequince Embroidered Work	Print With Sequince Embroidered And Mirror Work	Fancy Neck Style Dupata	0.80 MTR	42 INCH	2.40 MTR
2302	Navy	Georgette	Georgette	Georgette	42 BUST AND WAIST	Thread With Sequince Embroidered Work	Thread With Sequince Embroidered Work	Thread With Sequince Embroidered Work	0.80 MTR	42 INCH	2.40 MTR
2303	Green	Georgette	Georgette	Georgette	42 BUST AND WAIST	Thread With Sequince Embroidered Work	Thread With Sequince Embroidered Work	Thread With Sequince Embroidered Work	0.80 MTR	42 INCH	2.40 MTR
2304	Mustared Olive	Georgette	Chinon Silk	Chinon Silk	42 BUST AND WAIST	Embellished Mirror Work	Thread With Sequince Embroidered Work	Thread With Sequince Embroidered Work	0.80 MTR	42 INCH	2.40 MTR
2305	Orange Wine	Georgette	Chinon Silk	Chinon Silk	42 BUST AND WAIST	Embellished Mirror Work	Thread With Sequince Embroidered Work	Fancy Shoulder Style Dupatta (Thread With Sequince Embroidered And Mirror Work)	0.80 MTR	42 INCH	2.40 MTR
2306	Purple	Georgette	Chinon Silk	NET	42 BUST AND WAIST	Print With Sequince Embroidered Work	Print With Sequince Embroidered Work	Sequince Embroidered Work	0.80 MTR	42 INCH	2.40 MTR

Weight: 2 KG

THIS BOOK / CATALOGUE / LOGO / ARE PROTECTED UNDER COPYRIGHT ACT.
AN INLEGAL/UNAUTHORIZED REPRINT, PUBLISHING, REPRODUCTION, DISTRIBUTION AND MODIFICATION OF ANY IMAGES, PHOTOGRAPHS AND PRODUCTS, TOTALLY OR IN PART, FOR ANY PURPOSE, REASON OR CAUSE IS STRICTLY PROHIBITED AND PUNISHABLE UNDER LAW.