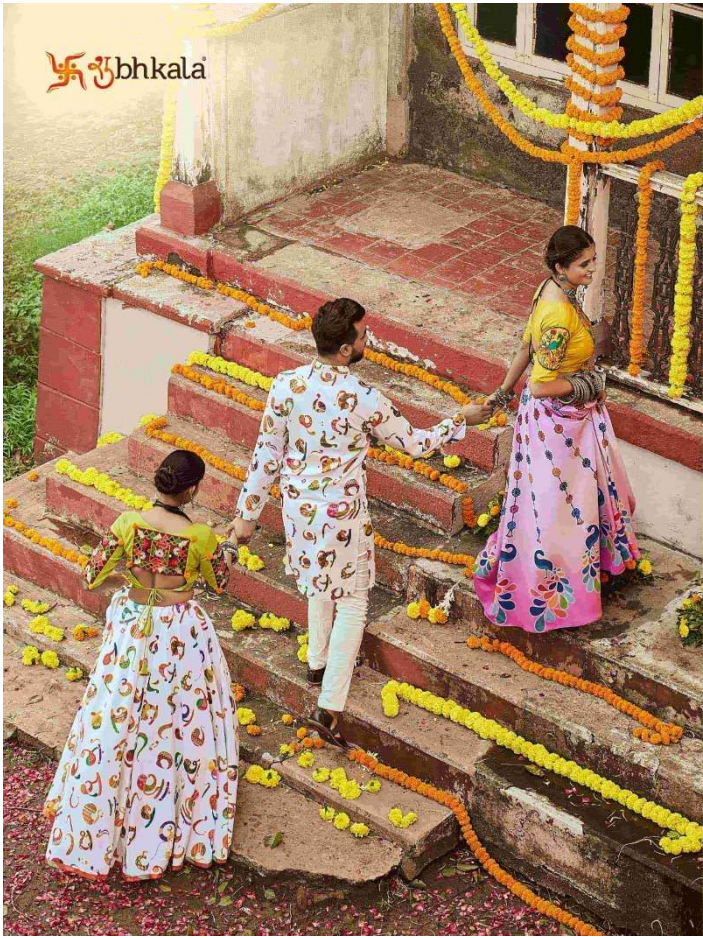


❧bhkala



2121



2122



2123



2124



2125



2126



2127



2128



2129



❧bhkala



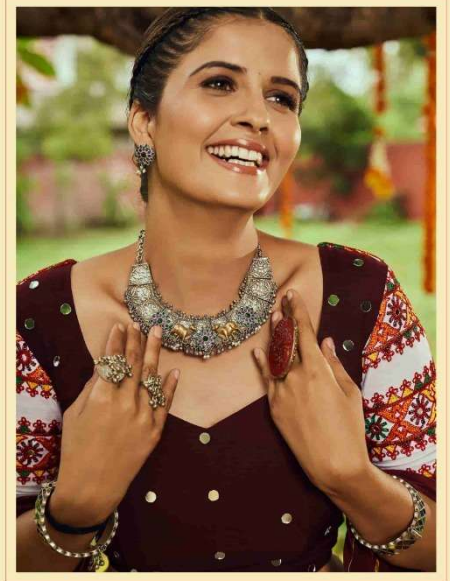


Design No. (SKU)	2121	2122	2123	2124	2125	2126	2127	2128	2129
Lehenga Color	Pink	White	Dusty Pink	Black	White & Navy	Sky	Black	Yellow	Multi Color
Choli Color	Fluorescent Green	Fluorescent Green	Dusty Pink	Black	Navy	Sky	Deep Pink	Green	Maroon
Dupatta Color	Navy	Deep Pink	Navy	Maroon	Navy	NA	White	Deep Pink	Maroon
Koti						Available (Printed Work)			
(Full Stitched) (42-SIZE)	NA	NA	NA	NA	NA	NA	NA	NA	NA
Waist Belt (Hand Mirror Work)	NA	NA	NA	Available	NA	NA	NA	NA	Available
Lehenga Flair	8.5 MTR	8.5 MTR	8.5 MTR	8.5 MTR	8.5 MTR	8.5 MTR	8.5 MTR	8.5 MTR	8.5 MTR
Lehenga Fabric	Maslin Cotton	Maslin Cotton	Silk	Maslin Cotton	Maslin Cotton	Maslin Cotton	Maslin Cotton	Maslin Cotton	Maslin Cotton
Choli Fabric	Silk	Maslin Cotton	Silk	Maslin Cotton	Maslin Cotton	Cotton	Maslin Cotton	Maslin Cotton	Gajji Silk
Dupatta Fabric	Cotton	Cotton	Maslin Cotton	Cotton	Maslin Cotton	NA	Maslin Cotton	Cotton	Silk
Size (Semi Stitched)	UPTO 42 BUST AND WAIST	UPTO 42 BUST AND WAIST	UPTO 42 BUST AND WAIST	UPTO 42 BUST AND WAIST	UPTO 42 BUST AND WAIST	UPTO 42 BUST AND WAIST	UPTO 42 BUST AND WAIST	UPTO 42 BUST AND WAIST	UPTO 42 BUST AND WAIST
Lehenga Work	Digital Printed with Mirror Pasting Work	Digital Printed Work	Digital Printed Work	Digital Printed Work	Digital Printed with Thread Embroidered with all-Over Mirror Work	Digital Printed with all Over Tessals Pasting Work	Digital Printed with Mirror Pasting Work	Digital Printed with Mirror Pasting Work	Digital Printed Work
Choli Work	Thread Embroidered Work	Thread Embroidered with Mirror Hand Work	Digital Printed Work	Thread Embroidered work with All-Over Mirror Pasting Work	Thread Embroidered work with Embellished Mirror Work	Shibburi Print	Thread Embroidered work with Mirror Work	Embellished Mirror Work	Thread Embroidered with Mirror Work
Dupatta Work	Aari Work with Printed Dupatta	Aari Work with Printed Dupatta	Embellished Mirror Work Stall Style Dupatta	Aari work with Printed Dupatta	Embellished Mirror Work	NA	Thread Embroidered with all over Mirror Pasting Work Stall Style Dupatta	Aari Work with Printed Dupatta	NA
Lehenga Length (Full Stitched)	42 INCH Length 42 INCH Waist	42 INCH Length 42 INCH Waist	42 INCH Length 42 INCH Waist	42 INCH Length 42 INCH Waist	42 INCH Length 42 INCH Waist	42 INCH Length 42 INCH Waist	42 INCH Length 42 INCH Waist	42 INCH Length 42 INCH Waist	42 INCH Length 42 INCH Waist
Choli Length	0.65 MTR	1 MTR	1 MTR	1 MTR	1 MTR	1 MTR	1 MTR	1.20 MTR	1 MTR
Dupatta Length	2.30 MTR	2.30 MTR	2.30 MTR	2.30 MTR	2.30 MTR	NA	2.30 MTR	2.30 MTR	2.30 MTR
Weight	1.5 KG	1.5 KG	1.5 KG	1.5 KG	1.5 KG	1.5 KG	1.5 KG	1.5 KG	1.5 KG

THIS BOOK / CATALOGUE / LOGO / ARE PROTECTED UNDER COPYRIGHT ACT. AN ILLEGA/UNAUTHORIZED REPRINT, PUBLISHING, REPRODUCTION, DISTRIBUTION AND MODIFICATION OF ANY IMAGES, PHOTOGRAPHS AND PRODUTCS, TOTALLY OR IN PART, FOR ANY PURPOSE, REASON OR CAUSE IS STRICTLY PROHIBITED AND PUNISHABLE UNDER LAW.



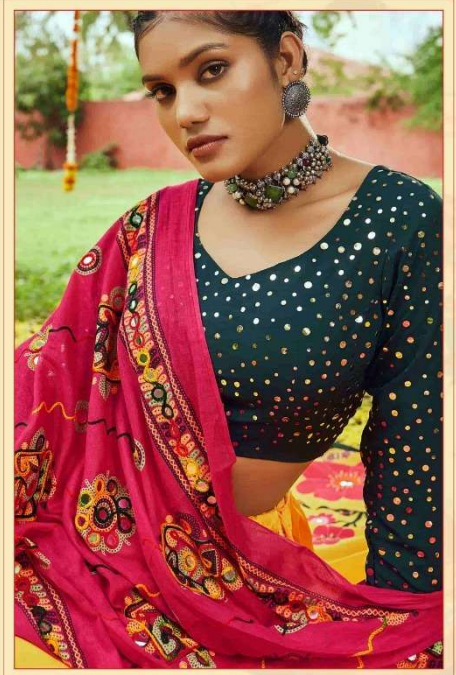
Swastika bhkala



2129



卐 bhkala




First and Last
2128

शुभकला



The joy of dressing
2127





शुभकला

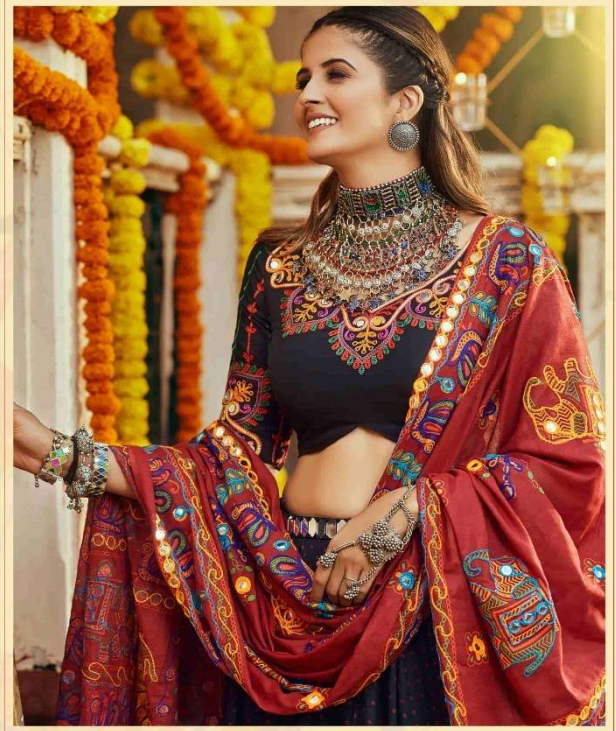


2126




Always Be Different
2125






Fashion Spring
2124

शुभकला



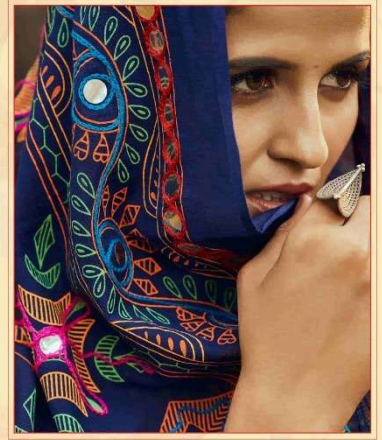
2123







卐 bhkala




Let's Run Fashion
2121