

# To REEVAZ

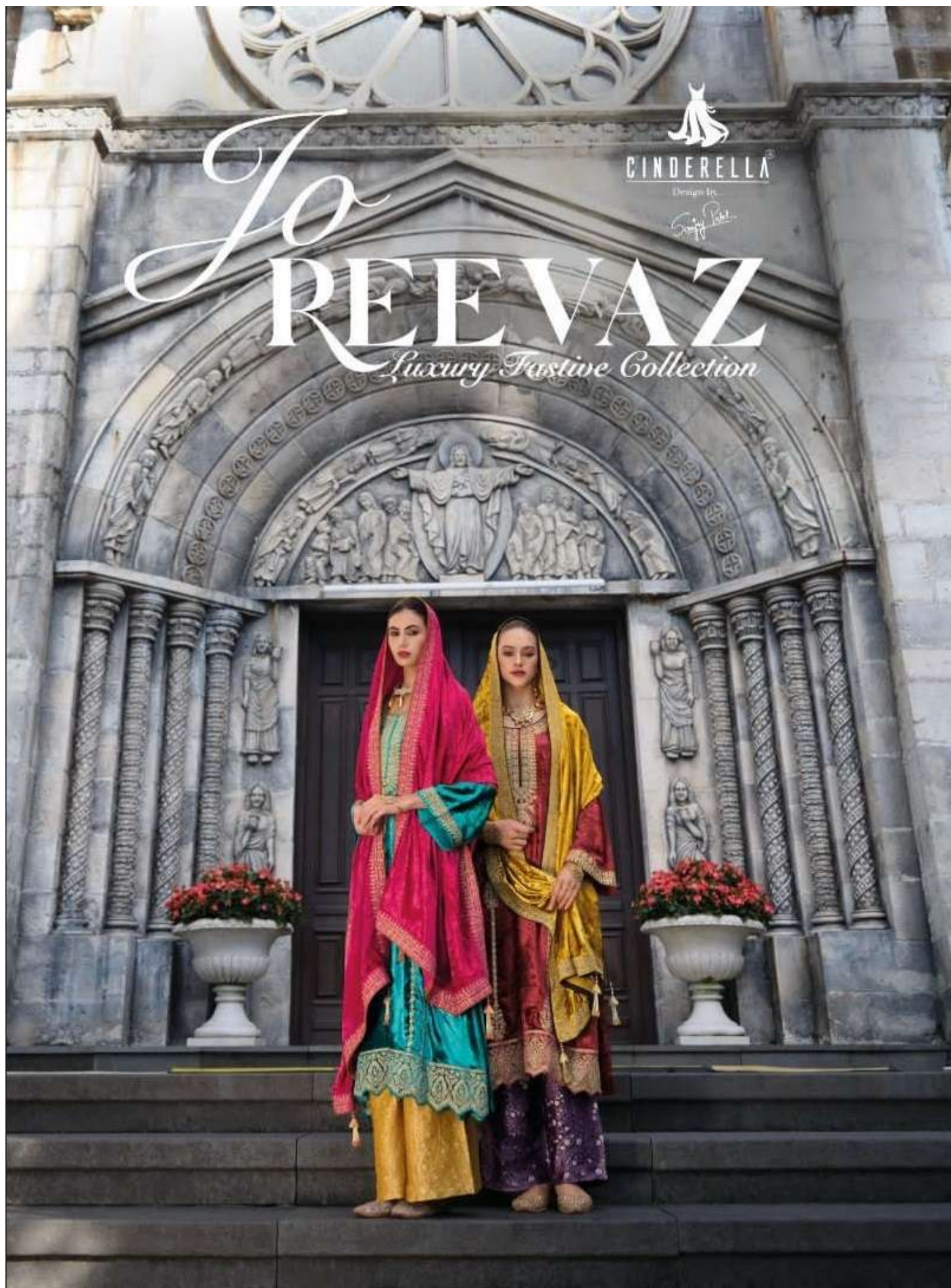
*Luxury Festive Collection*



CINDERELLA

Design by...

Sanghi Pahl







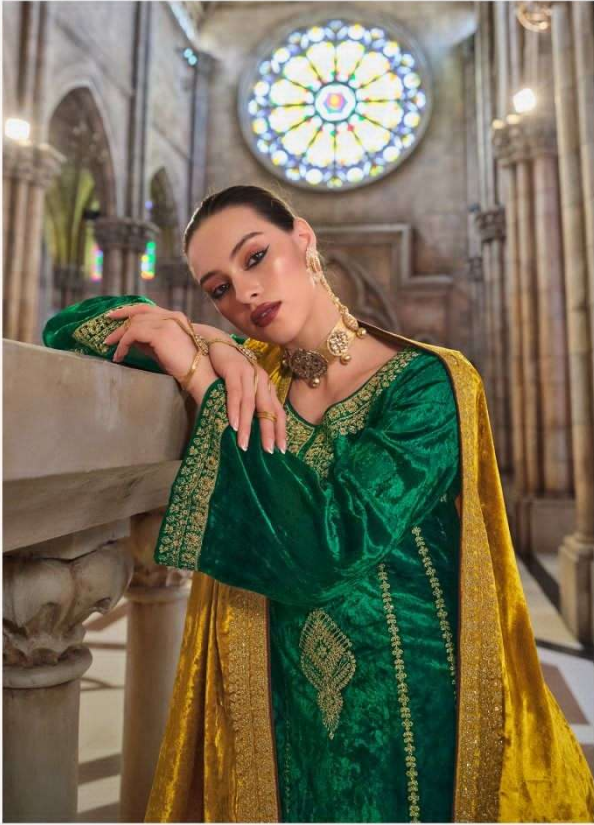






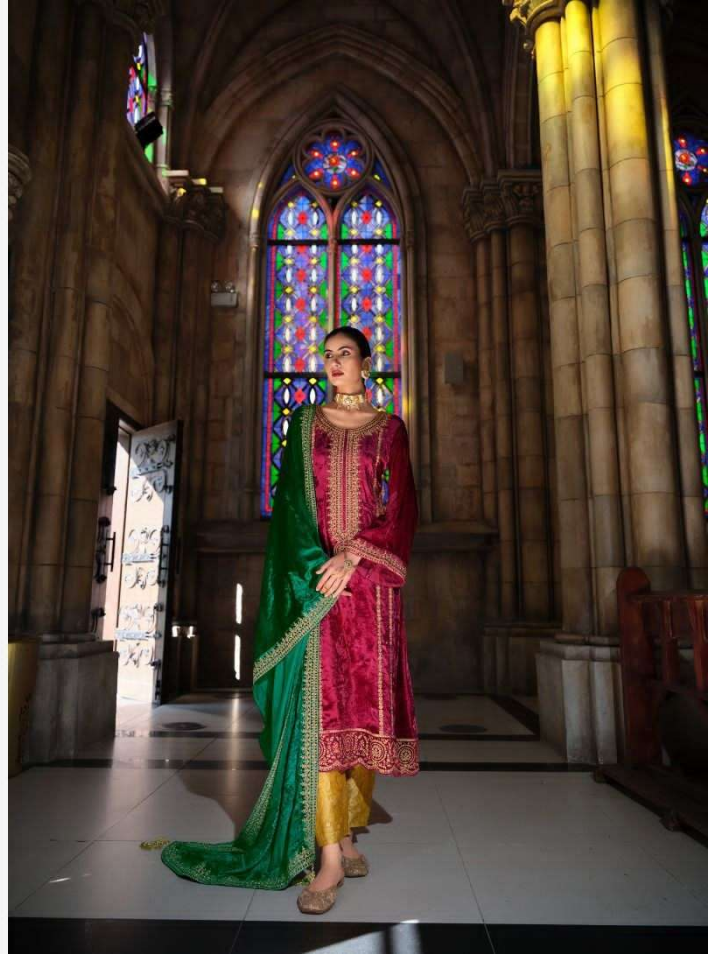
CINDERELLA  
Designed by  
Saffi

SPECTACULAR 010415

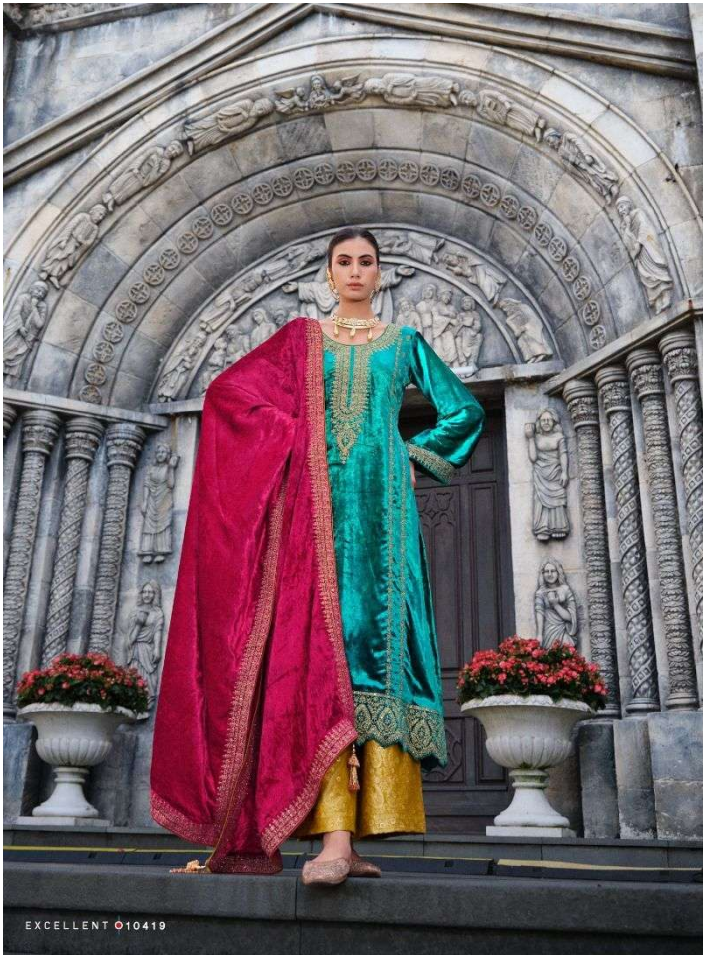












  
CINDERELLA®  
Design by  
*Sofia*









10413



10414



10417



10418



10415



10416



10419



10420

**CINDERELLA®**  
Design by  
*Sangeeta*

*Jo*  
**REEVAZ**  
*Luxury Festive Collection*





NO	DESCRIPTION	RATE
10413	<b>SHIRT</b>  Presenting to you Jo Reevaz - a 3D color outfit that makes it stand out and look attractive. This shirt is made from pure Munich viscose velvet. The neckline of the shirt is embellished with a designer and stunning embroidery that adds a touch of glamour. The front and back sides of the shirt are adorned with beautiful embroidery coding work that creates a stunning pattern. Fancy embroidery at sleeves makes it more elegant. Heavy embroidery work at Daman adds an esthetic value to this shirt	3495/-
10414		3495/-
10415		3495/-
10416		3495/-
10417	<b>DUPATTA</b>  Crafted from pure Viennese viscose Velvet With embroidery work at four sides of dupatta The contrast color of dupatta creates an impressive look with the shirt	3495/-
10418		3495/-
10419	<b>TROUSERS</b>  Made from Pure Verona Jacquard Pashmina. The jacquard designs add style to the trousers The warm and stylish trousers have contrast matching with the shirt and dupatta	3495/-
10420		3495/-
DESIGNR-8		RATE:-27960



# To REEVAZ

*Luxury Festive Collection*



CINDERELLA

Design by...

Sanghi Pahl

