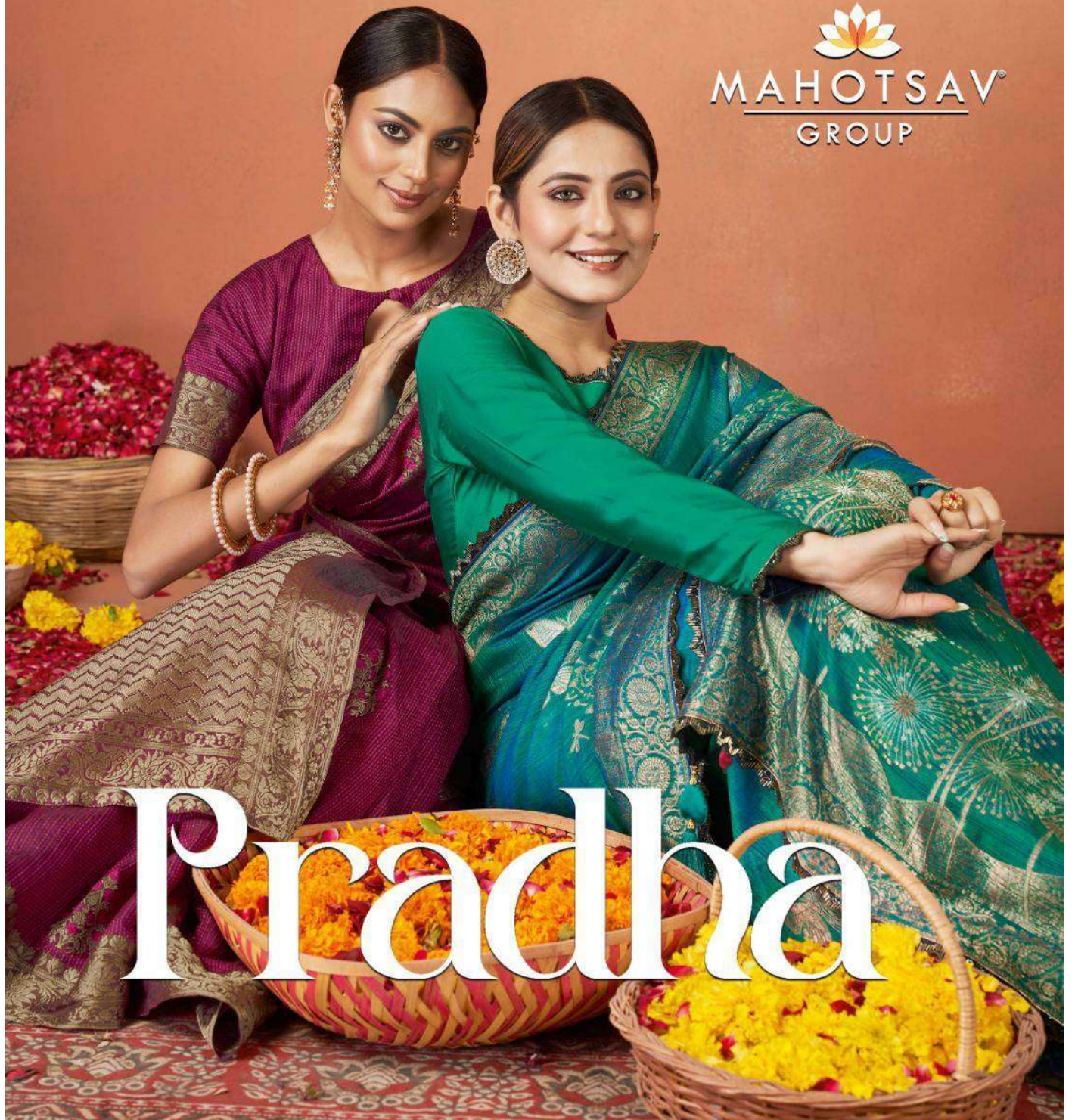


# NORRITA

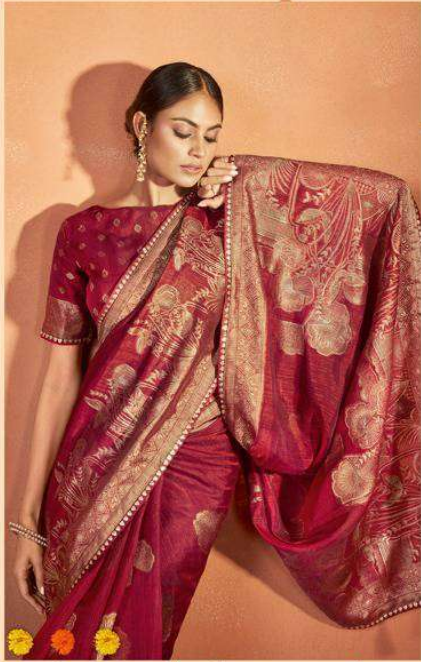
Royal



MAHOTSAV<sup>®</sup>  
GROUP

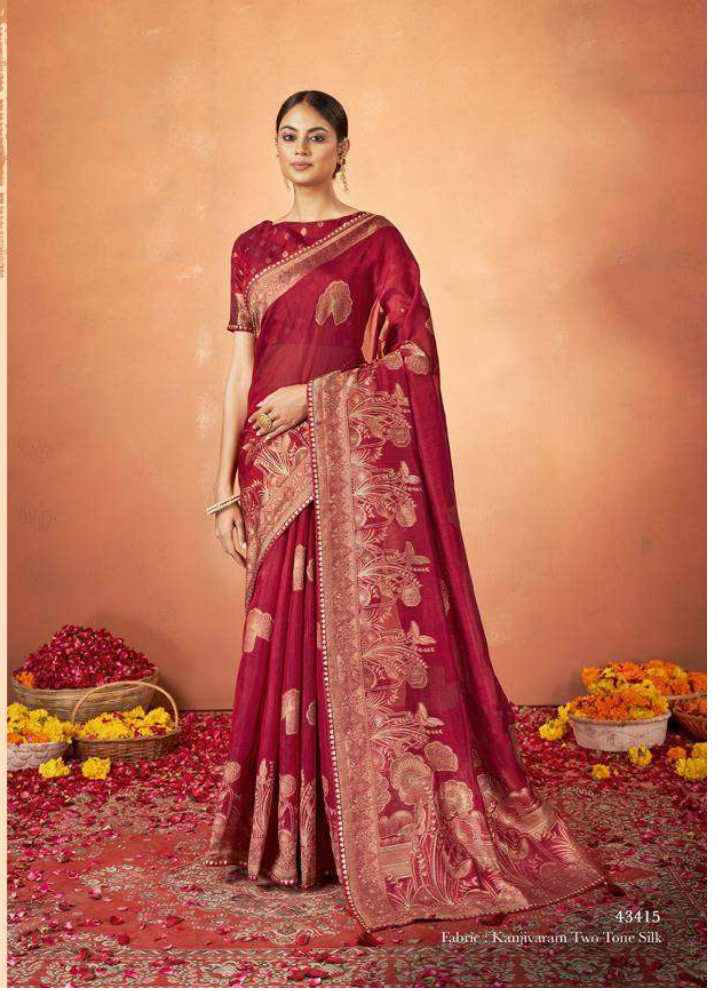


# Pradhha



### તિલોદેહ રહે શૌર્ય દ્વારે વેદાંગ

Within the aura of this traditional red saree, a woman's beauty blossoms with timeless elegance. Each drape embodies passion and grace, capturing the beauty, and making her radiant, inside and out.

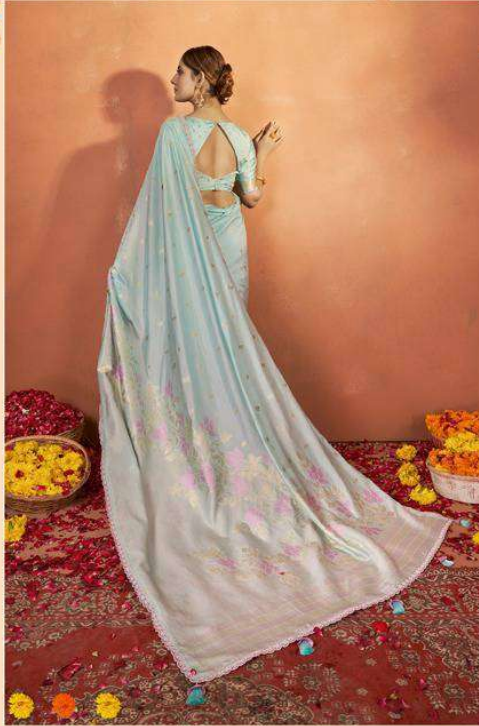


43415

Fabric : Kanjivaram Two-Tone Silk

પરવરનાં ભાવ ટોચેટોચાં કાદવું

With every fold, a statement is woven, embracing the power of her essence. The marriage of past with the present symbolizes the harmonious blend of heritage and modern allure.



43414  
Fabric : Tussar Silk



## fusion of thought and colour

The fusion of these vibrant hues illuminates her presence with a unique radiance. The union of these enchanting colors paints her in a vibrant light.



43416

Fabric: Foster Satin Silk

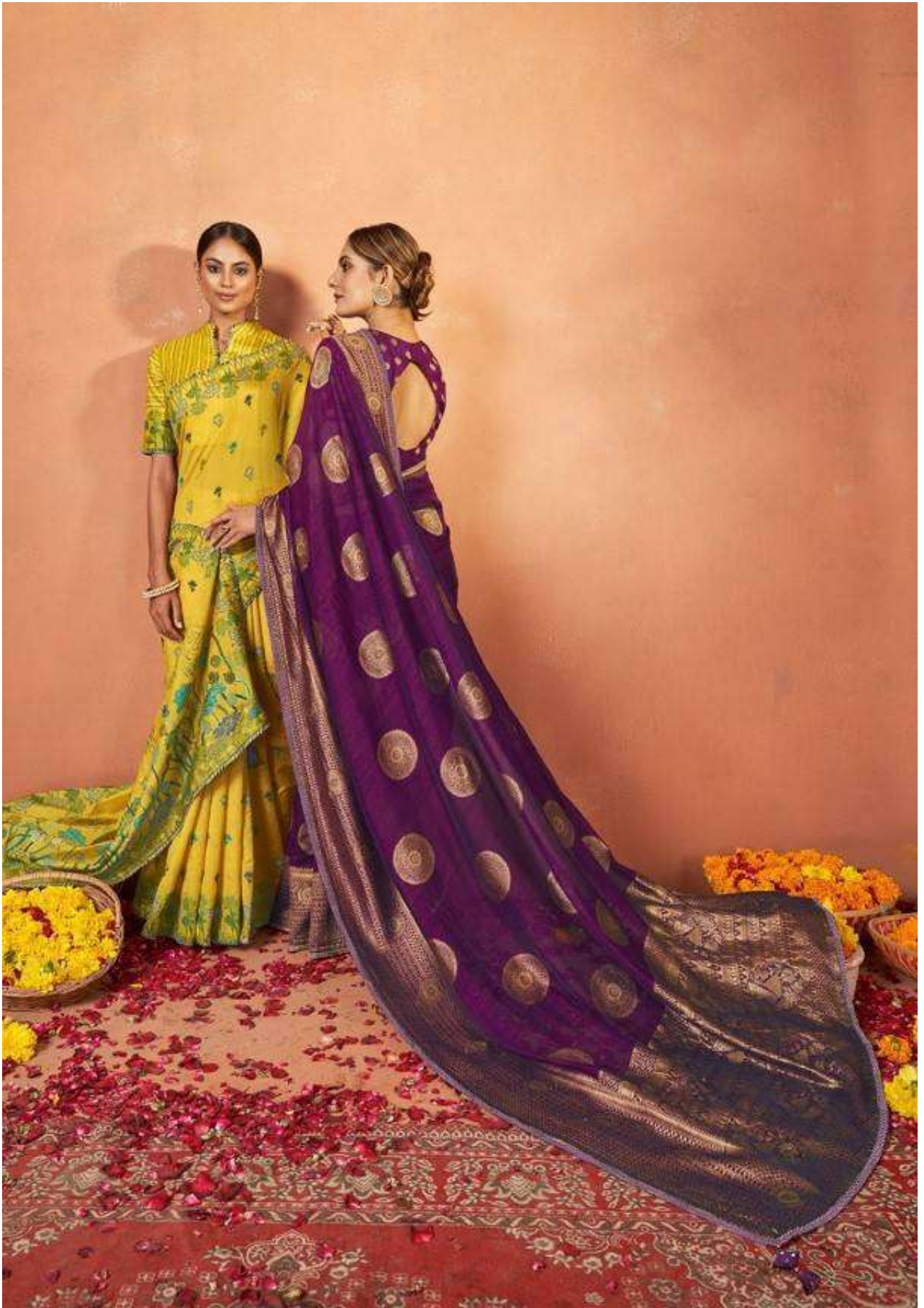
NORITA  
*Royal*



SCAN THE CODE WITH GOOGLE LENS  
TO WATCH AN EXCLUSIVE  
PREVIEW OF THE DESIGN









## इतनी प्यारी राख

With this yellow graceful saree, radiance takes center stage. This luminous hue embodies the essence of joy and positivity, casting a woman in a golden glow.



43412  
Fabric : Tussar Silk

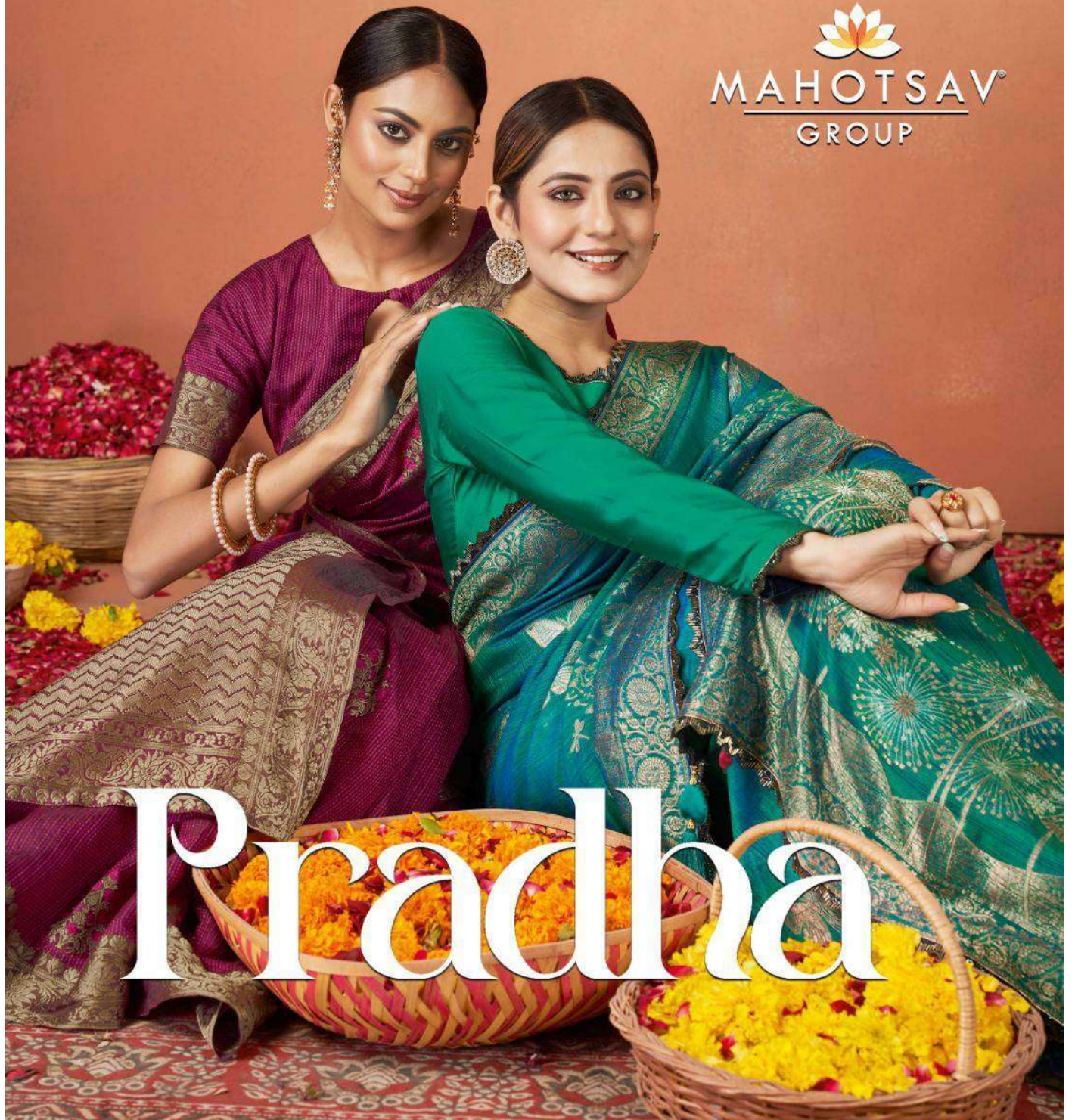


# NORRITA

Royal



MAHOTSAV<sup>®</sup>  
GROUP



# Pradhha



43407



43408



43409



43410



43415



43416



43417



43411



43412



43413



43414



43418



43419

NORITA

MAHOTSAV GROUP



43418

Fabric : Crepe Silk

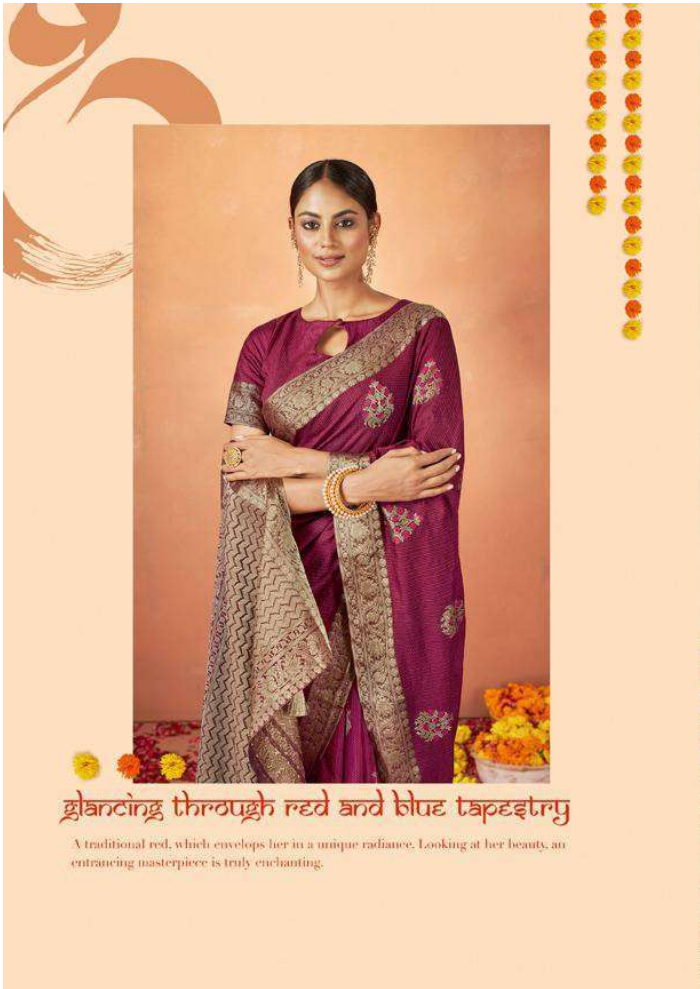


43419

Fabric : Pure Viscose Silk



SKU Code	Fabric		Length (m)		Work	Pattern	Blouse
	Saree	Blouse	Saree	Blouse	Printed/Embroidered		
43407	Kanjivaram two tone Silk	Malai Satin	5.5	0.8	Texture with readymade & hand work lace	Woven Design	unstitched Blouse Piece
43408	Organza Silk	Silk Crepe	5.5	0.8	Stone Work	Woven Design	unstitched Blouse Piece
43409	Organza Silk	Organza Silk	5.5	0.8	Sequence & Thread Work	Woven Design	unstitched Blouse Piece
43410	Tusser Silk	Silk Crepe	5.5	0.8	Stone Work	Woven Design	unstitched Blouse Piece
43411	Kanjivaram two tone Silk	Silk Crepe	5.5	0.8	readymade & hand work lace	Woven Design	unstitched Blouse Piece
43412	Tusser Silk	Tusser Silk	5.5	0.8	Floral Thread Embroidered	Woven Design	unstitched Blouse Piece
43413	Organza Silk	Silk Crepe	5.5	0.8	Sequence & Thread with cord Embroidered	Woven Design	unstitched Blouse Piece
43414	Tusser Silk	Silk Crepe	5.5	0.8	Sequence & Thread with cord Embroidered	Woven Design	unstitched Blouse Piece
43415	Kanjivaram two tone Silk	Silk Crepe	5.5	0.8	Sequence & Jari Work	Woven Design	unstitched Blouse Piece
43416	Tusser Satin Silk	Tusser Satin Silk	5.5	0.8	readymade & hand work lace	Woven Design	unstitched Blouse Piece
43417	Tusser Silk	Tusser Silk	5.5	0.8	Stone Work	Woven Design	unstitched Blouse Piece
43418	Crepe Silk	Taffeta	5.5	0.8	Embroidery, sequence, Zari and Stone	Woven Design	unstitched Blouse Piece
43419	Pure Viscose Weaved Silk	Brocade Silk	5.5	0.8	Resham , Zari and Cord embroidery	Woven Design	unstitched Blouse Piece



*glancing through red and blue tapestry*

A traditional red, which envelops her in a unique radiance. Looking at her beauty, an entrancing masterpiece is truly enchanting.



43417  
Fabric: Tusser Silk



ಗೌಡೆ ಡಾನ್ಸಿಂಗ್  
ವೈಯಾಲ್ಯಾಂಟ್ ರಿವಿವೆ



The Red Maroon Organza Silk Saree is a canvas where classic and modern artistry coalesce. Vintage motifs seamlessly evolve into the language of today.



43408  
Fabric: Organza Silk

## इहरेनए लोबालि ग्राए

This Blue abode, a timeless legacy embraces modern vision. Classic motifs dance with contemporary flair, wrapping a woman in an artful portrayal of elegance and timeless relevance.



43407

Fabric : Kamayaram Two-Tone Silk



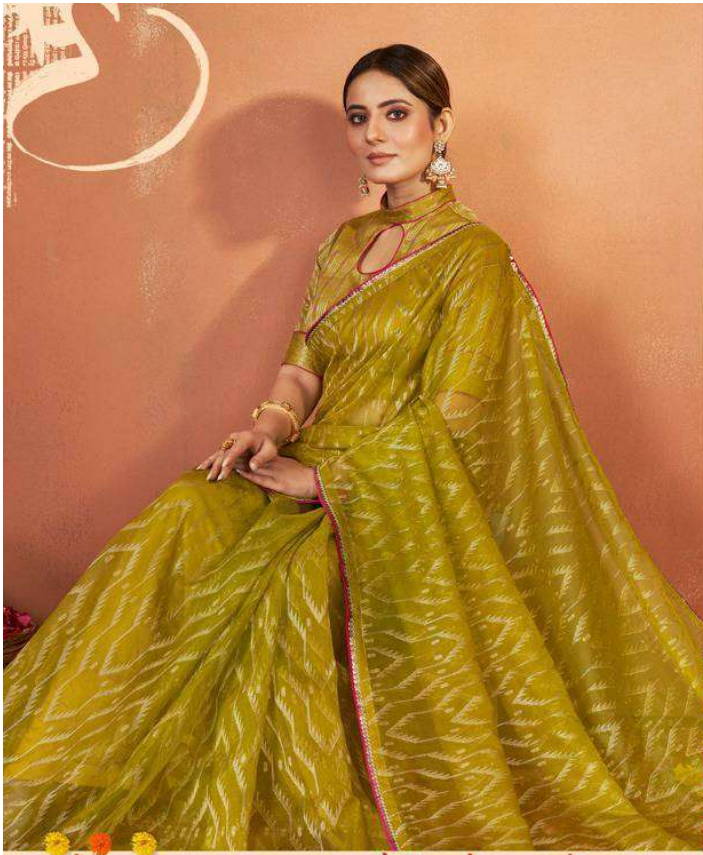
traditional indigo charo

In the realm of the Blue Silk Saree, femininity blossoms boldly. With every graceful fold, a story of tenacity is spun, honouring the essence of her resilience.



43410  
Fabric: Tusser Silk





**chartreuse grace and its elegant hues**  
This lively hue mirrors a woman's fortitude, echoing her unwavering spirit. Each fold weaves a narrative of strength and allure, encapsulating the essence of her power.



43409  
Fabric - Organza Silk



### kanjivaramal इटालेत दोदकुण्टे

This beautiful saree in Kanjivaram Silk travels emotional depth within a woman. Every fold weaves a narrative of emotional allure, embodying a living testament to the depth of her emotional beauty.



43411

Fabric : Kanjivaram Two Tone Silk



# ମିଳିତ ସ୍ୱାଦେଶୀୟତା ଓ ପାରମ୍ପରିକତା

Adorned in this creation, she becomes a canvas of beauty, radiating a charisma that blends the warmth of light purple with the allure of emotions, creating a unique womanhood



43413  
Fabric: Organza Silk