



*Zulfat*<sup>®</sup>  
Designer Suits

# FARHANA





“

Wearing an attire is a reflection of our social life, most women prefer to wear socially appropriate clothes. They are always looking for reaction to their clothing. It impacts the mind set of woman if others react in a certain way what she is wearing.

”



528-002



**Zulfat**  
Dressmaker

“  
REAL WOMEN ARE EMBRACING THIS TREND.  
THEY HAVE BUSY, MULTITASKING LIVES AND  
NEED PIECES THAT WORK HARD FOR THEM. WE  
MADE TIMELESS, FUNCTIONAL PIECES THAT  
CAN WEAR IN MANY DIFFERENT WAYS... ITS RE-  
LAXING ”

## ENJOY THE LITTLE THINGS



528-003

Zulfat®  
DESIGNER BRAND







528-001

## THE NEW IMPLICIT

Show stealing red never goes out of style, as the colour of love and mischief it remains the quintessential shade of femininity. ”



 **Zulfat**<sup>®</sup>  
Designs Since 1981



528-004



“  
Bold beautiful and dard” three words  
that describe this look. Immerse your-  
self in a soft haze of blue collection. All  
eyes will be on you  
”





“

Bold beautiful and dard three words that describe this look. Immerse yourself in a soft haze of blue collection. All eyes will be on you

”



**Zulfat**  
Designed Suits

528-006



 **Zulfat**<sup>®</sup>  
DESIGNER BRAND

THE NEW  
**IMPLICITY**

Show stealing red never goes out of style, as the colour of love and mischief it remains the quintessential shade of femininity. ”

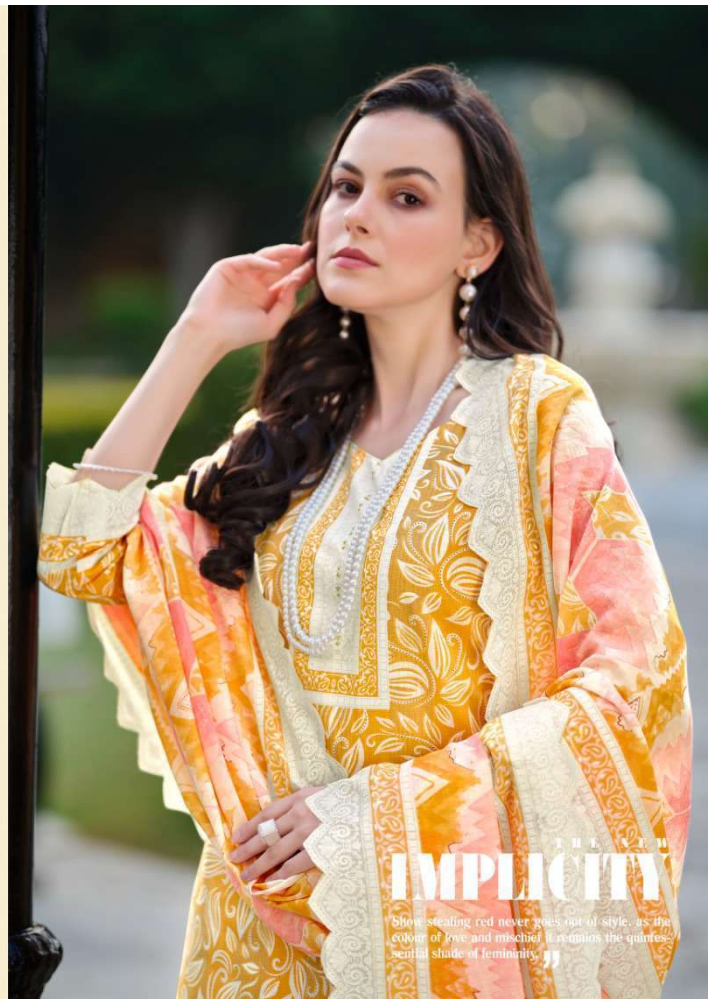


528-005





528-008



THE  
**IMPLICITY**

"Show stealing red never goes out of style, as the colour of love and mischief it remains the quintessential shade of femininity."





 **Zulfat**  
DESIGNER



“  
Wearing an attire is a reflection of our social life, most women prefer to wear socially appropriate clothes. They are always looking for reaction to their clothing. It impacts the mind set of women if others react in a certain way what she is wearing.”

528-007



528-001



528-002



528-003



528-004



528-005



528-006



528-007



528-008







*Zulfat*<sup>®</sup>  
Designer Suits

# FARHANA

