



Zulfat®
Designer Suits

FARHANA

VOL-02



“

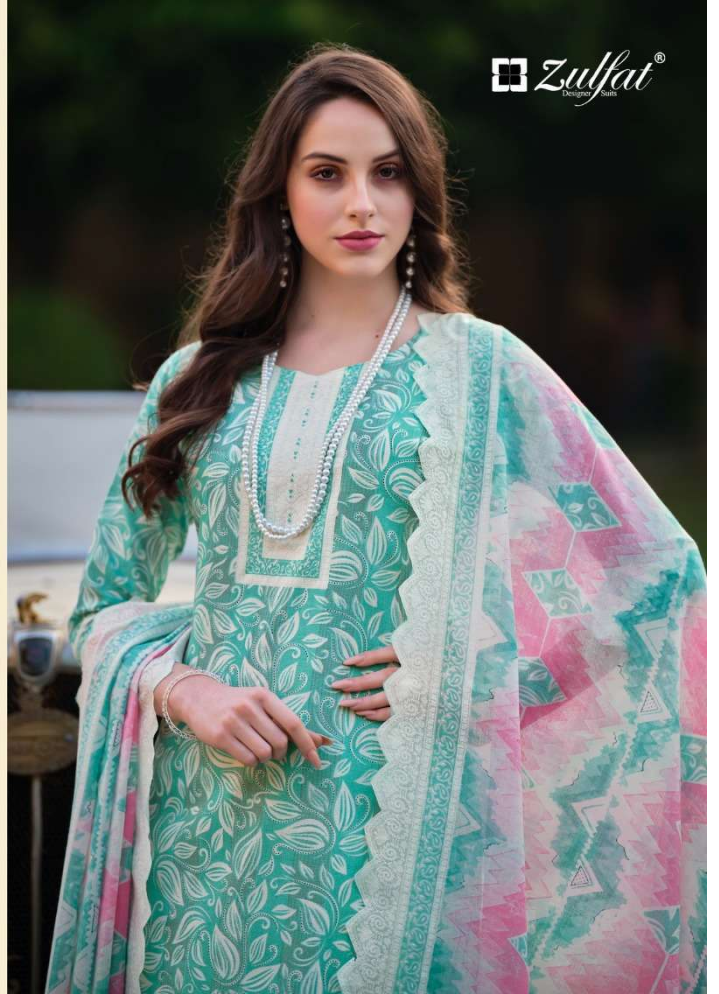
REAL WOMEN ARE EMBRACING THIS TREND. THEY HAVE BUSY, MULTITASKING LIVES AND NEED PIECES THAT WORK HARD FOR THEM. WE MADE TIMELESS, FUNCTIONAL, PIECES THAT CAN WEAR IN MANY DIFFERENT WAYS... ITS RELAXING.”

ENJOY THE LITTLE THINGS



536-003

Zulfat®
DESIGNER WEAR





“

Bold, beautiful and daring three words that describe this look, immerse yourself in a sari here of blue collection. All eyes will be on you

”



Zulfat®
Designs Sarees



536-006



Zulfat
DESIGNER

THE NEW
IMPLICITY

Show stealing red never goes out of style, as the colour of love and mischief it remains the quintessential shade of femininity. ”



536-005



Zulfat®
Designer Suits

FARHANA

VOL-02





536-001

THE NEW IMPLICITLY

Show stealing red never goes out of style, as the colour of love and mischief it remains the quintessential shade of femininity. ”



 **Zulfat**[®]
Designs Suits



 **Zulfat**[®]
Pakistani Fashion



“
Wearing an attire is a reflection of our social life, most women prefer to wear socially appropriate clothes. They are always looking for reaction to their clothing. It impacts the mind set of woman if others react in a certain way what she is wearing.
”

536-007

“
Wearing an attire is a reflection of our social life. Most women prefer to wear socially appropriate clothes. They are always looking for reaction to their clothing. It impacts the mind set of woman if others react in a certain way what she is wearing.”



536-002



 **Zulfat**[®]
Womenswear



536-001



536-002



536-003



536-004



536-005



536-006



536-007



536-008



Zulfat®
Designer Suits



536-008



IMPLICIT

"Show-stealing red never goes out of style, as the color of love and mischief, it remains the quintessential shade of femininity."

 **Zulfat**
DESIGNER



536-004



“
Bold beautiful and dard” three words
that describe this look. Immense you-
sell in a soft haze of blue collection. All
eyes will be on you

”