



R-1297 A



READY MADE
COLLECTION

CARE INSTRUCTIONS

- DO NOT USE ANY TYPE OF BLEACH OR STAIN REMOVING CHEMICALS
- DO NOT OVER EXPOSE DAMP FABRIC TO STRONG SUNLIGHT
- IRON AT MODERATE TEMPERATURE



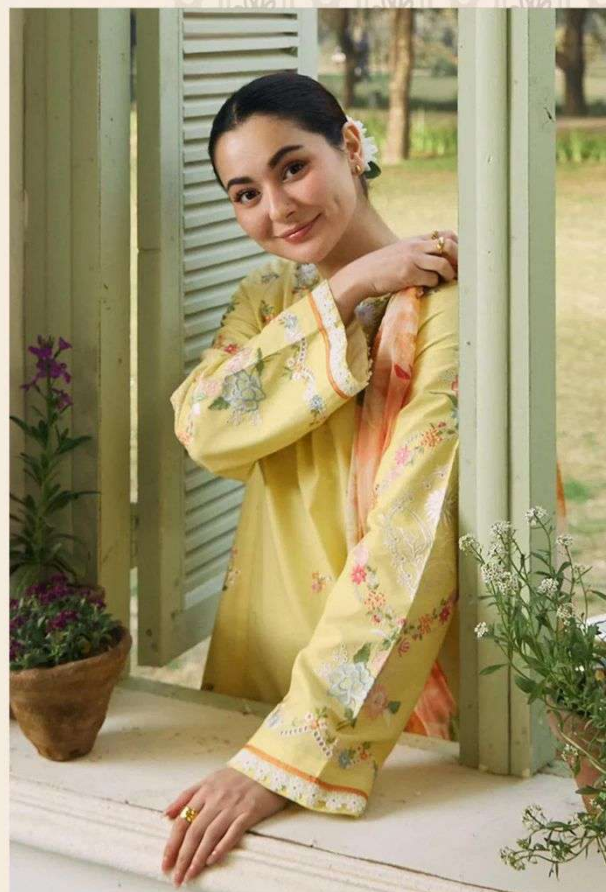
R-1297 D



READY MADE
COLLECTION

CARE INSTRUCTIONS

- DO NOT USE ANY TYPE OF BLEACH OR STAIN REMOVING CHEMICALS
- DO NOT OVER EXPOSE DAMP FABRIC TO STRONG SUNLIGHT
- IRON AT MODERATE TEMPERATURE



R-1297 A



READY MADE
COLLECTION

CARE INSTRUCTIONS

- DO NOT USE ANY TYPE OF BLEACH OR STAIN REMOVING CHEMICALS
- DO NOT OVER EXPOSE DAMP FABRIC TO STRONG SUNLIGHT
- IRON AT MODERATE TEMPERATURE



R-1297 B



READY MADE
COLLECTION

CARE INSTRUCTIONS

- DO NOT USE ANY TYPE OF BLEACH OR STAIN REMOVING CHEMICALS
- DO NOT OVER EXPOSE DAMP FABRIC TO STRONG SUNLIGHT
- IRON AT MODERATE TEMPERATURE



R-1297 C



READY MADE
COLLECTION

CARE INSTRUCTIONS

- DO NOT USE ANY TYPE OF BLEACH OR STAIN REMOVING CHEMICALS
- DO NOT OVER EXPOSE DAMP FABRIC TO STRONG SUNLIGHT
- IRON AT MODERATE TEMPERATURE

A woman with dark hair tied back, adorned with a white flower, is shown in profile. She is wearing a long, flowing yellow dress with intricate floral embroidery along the sleeves and down the front. She is standing next to a large, light-colored ceramic vase filled with a bouquet of pink and orange roses. The background is a simple, light-colored wall with a wooden door frame visible on the right.

Shree[®]
FABS



READY MADE
COLLECTION



R-1297 A



R-1297 B



R-1297 C



R-1297 D

